



Welcome to the Annual Publication of the
TAMWORTH SWINE ASSOCIATION



WWW.TAMWORTHSWINE.ORG



Illinois Tamworth Association

Dean & Becky Adams
640 Kleeman Dr.
Clinton, IL 61727

Gus & Zack Boucher
7286 N 2250 W. Road
Bourbonnais, IL 60914

Quint Harnacke
1620 100th Avenue, Box 101
New Holland, IL 62671

Glen Swenson
2953 N. 4750 Road
Sandwich, IL 60548

Ron Navis
5986 N 1475 East Road
Heyworth, IL 61745

Chad Waterman & Family
781 N 900 East Road
Palmer, IL 62556

Robert Smith
R.R. #1 Box 278A
Carrolton, IL 62016

Quint Harnacke: President
Glen Swenson: Secretary/Treasurer



* Rossville: Home of the first **Tamworths** imported to the United States in 1882.
As usual, the Illinois Tamworth Association will award \$250.00 prizes to an Illinois bred **Tamworth Barrow** and **Tamworth Gilt** shown in the **Illinois State Fair Junior Show**.

Carlenna Farms

**We are a pasture
based farm.**

**Tamworth
Chester Whites
Large Black**



**Call for genetically
matched bred gilts**

**Breeding Stock
Show Pigs
Gourmet Pork**

Harvey E. Work, Jr.
N5435 Pine Road
Eden, WI 53019

920-579-1544
carlenafarms@yahoo.com

The Tamworth Swine Association Inc. Directors and Officers

OFFICERS

David LaFollette, President
9680 East 550 North, Darlington, IN 47940
Phone: 765-794-0203
Email: DLafollette@TamworthSwine.org

Quint Harnacke, Vice President
1620 100th Avenue, New Holland, IL 62671
Phone: 217-445-2506
Email: QHarnacke@TamworthSwine.org

Shirley R. Brattain, Secretary/Treasurer
621 N 850 W, Greencastle, IN 46135-7771
Phone: 765-653-4913
Email: SBrattain@TamworthSwine.org

DIRECTORS

David LaFollette — Darlington, IN — 765-794-0203
Ed Baker — West Terre Haute, IN — 812-535-3643
Paul Morrison — New Madison, OH — 937-459-0389
George McDermit — Greencastle, IN — 765-653-4342
Don Dawson — Kempton, IN — 765-947-5255
Dave Rains — Gallatin, MO — 660-663-3648
Quint Harnacke — New Holland, IL — 217-445-2506

INDEX OF ADVERTISERS

Baker's Tamworth Hogs.....	18
Brattain Farms Tamworths.....	10
Carlena Farms.....	Inside Front
Dennis Farms Tamworths.....	6
Doug Millar Farms	9
Earth One, LLC.....	11
East Hill Farm	16
Emerald Farms	14
George McDermit / McDermit Genetics.....	11
Harnacke Tams.....	6
Hogwash Farm	13
Illinois Tamworth Association.....	Inside Front
LaFollette & Koopman Showpigs	Inside Back
Leaning Pine Farms	12
Mack Hill Farm.....	16
Mac's Tams.....	8
Maple Grove Farm.....	5
Mountain Meadow Tamworths.....	4
Paul Morrison & Family	Back Cover
Prairie State Semen	4
Swenson Farms.....	13
Three Bells Ranch.....	16
Whistleberry Farm	13

FEATURES

New Website (www.TamworthSwine.org)	2
Tamworth Queens	2
Junior Gilt Show 2011.....	2
2010 National Show Winners	3
Tamworth Information.....	7
Registration Application	19
Tamworth Origin & History.....	20
Swine Gestation Table.....	20
2010 Tunbridge Swine Show.....	21
Tamworth Ear Notching System	22
Tamworth Article: <i>The 'Bacon' Pig</i>	23
Youth of Today (photos).....	24

DEPARTMENTS

Officers and Directors.....	1
National Show & Sale 2011	3
Fees for Registration	7
2011 Breeders Directory.....	15
Jr./Sr. Membership Applications	17
Web Page	(www.TamworthSwine.org)

REGISTERING AND SELLING A REGISTERED PIG

I would like to thank all the exhibitors that attended the 2010 National Show and Sale and encourage all members new and old to attend in 2011 to be held in Greencastle, IN on September 3 & 4. Come join us for a great banquet, show and sale.

An exciting addition to our 2011 show is a junior show with prize money to be given to the top 3 placing gilts in each class with additional money awarded to the Champ and Reserve. Gilts shown in the Jr. Show can not be shown in the breeding show and will not be eligible for the sale. I look forward to seeing everyone at sales this spring and shows this summer.

David LaFollette, President
Phone: 765-794-0203
Email: DLafollette@TamworthSwine.org

***In 2010
Tamworth Registration
had 1586 Registrations
and 407 Transfers***



TAMWORTH NEWS

Welcome to the Official Website of the
TAMWORTH SWINE ASSOCIATION



WWW.TAMWORTHSWINE.ORG

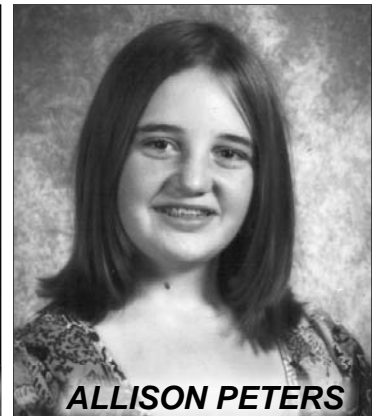
Visit our new website at WWW.TAMWORTHSWINE.ORG

TAMWORTH QUEENS

This year we are lucky to have two Tamworth Queens. We appreciate having these young ladies to inform the public about the Tamworth Breed of pigs. They both exhibit their Tamworth pigs at their County Fairs and also at the Indiana State Fair. They also help with the activities of the Tamworth Breed. — “Thanks” girls!



COURTNEY GULICK



ALLISON PETERS

NATIONAL TAMWORTH ASSOCIATION ANNOUNCES:

The National Tamworth Association at their Annual Meeting have decided to have a **JUNIOR GILT SHOW** to be held in conjunction with the Annual National Type Conference to be held September 3rd & 4th at Greencastle, Indiana.

We are inviting all junior exhibitors to attend and be part of this show. Open to all Junior Members of the association. membership applications may be received from the secretary.

- **Age Classes are: Under 3; 4-8; 9-14; 15-21**
- **Ages on pigs to be shown are; Dec-March**
 - **Class size will be 5 plus or minus 3**
 - **Classes will be broken as they enter**
 - **2 head per exhibitor**

- **Entry is \$10.00 per head.**
- **Prize money will be: \$25—1st place;**
\$15—2nd Place; \$10—3rd place
- **Champion \$100.00; Reserve Champion \$50**

Please let us know if you are coming by August 1st if you plan to attend so we may have a pen room available.

National Tamworth Swine Association
621 N 850 West
Greencastle, IN 46135

Dave LaFollette, President
Shirley R. Brattain, Secretary

WE HOPE TO SEE YOU THERE!

Remember, the gilt you show in the Junior Show may not be shown in the regular Type Conference Show. Pigs shown in the Junior Show are not to be sold.



2010 Tamworth Association NATIONAL SHOW & SALE

SATURDAY, SEPTEMBER 3rd, 2011

Fairgrounds • Greencastle Indiana 46135

Annual Banquet and Meeting: Putnam Inn Restaurant

Social Hour: 6 - 6:30 p.m. • Dinner: 6:30 p.m. • Meeting to Follow

SUNDAY, SEPTEMBER 4th SHOW & SALE

Show: 12:00 noon • Sale: 5 p.m.

Putnam County Fairgrounds • US 231 North • Greencastle, Indiana

Motels: College Castle Motel • 231 South • (765) 653-4167

Tamworth Swine Association

Shirley R. Brattain, Sec. • 621 N 850 W • Greencastle, Indiana 46135-7771

(765) 653-4913 • E-Mail: SALE@TamworthSwine.org

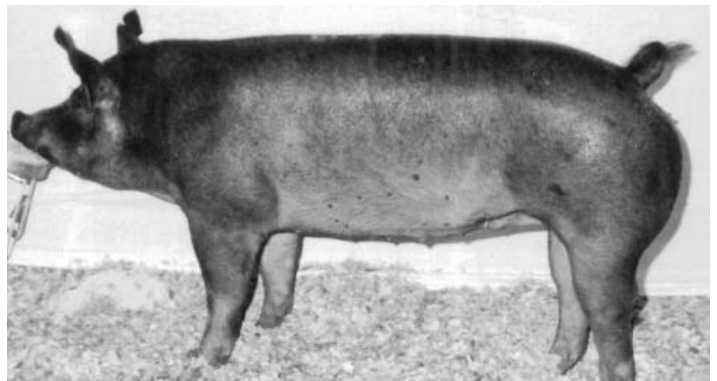
2010 NATIONAL SHOW WINNERS

CHAMPION BOAR

LMO Mac's Pride 8-2

Owner: McMullen/McClaskey

Purchaser: Doug Millar

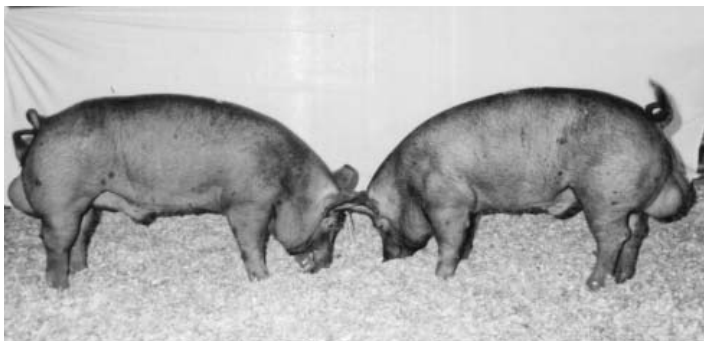


CHAMPION GILT

LMO Andi 12-1

Owner: McMullen/McClaskey

Purchaser: Fenton Brothers



RESERVE CHAMPION BOAR

LMO Man 12-9

Owner: McMullen/McClaskey

RESERVE CHAMPION GILT

AHF 4-7 • Owner: KCR Smith

2010 Scholarship Gilt donated by Fenton Brothers - Purchased by Quint Harnacke.

FUN AUCTION: Thanks to all who joined our Fun Auction, the proceeds of which go to the SCHOLARSHIP we award every year. Bring an item and it will be auctioned off just before the sale starts.

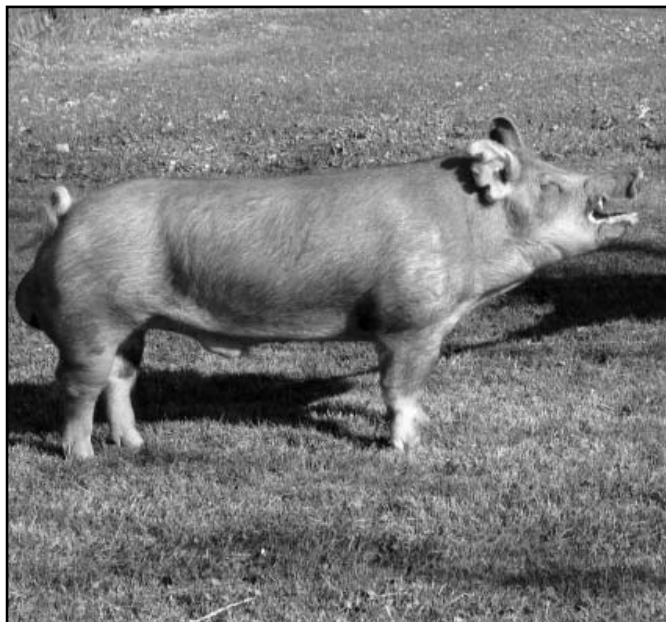




Charlie Barnes New Castle, VA (540) 864-5230 ~~ Larry Bright Floyd, VA (540) 745-5790
E-mail: ifarmueat@aol.com E-mail: bright@swva.net



Prairie State Semen, Inc.
968 Co. Rd, 1000 N
Champaign, IL 61822
800-282-0428



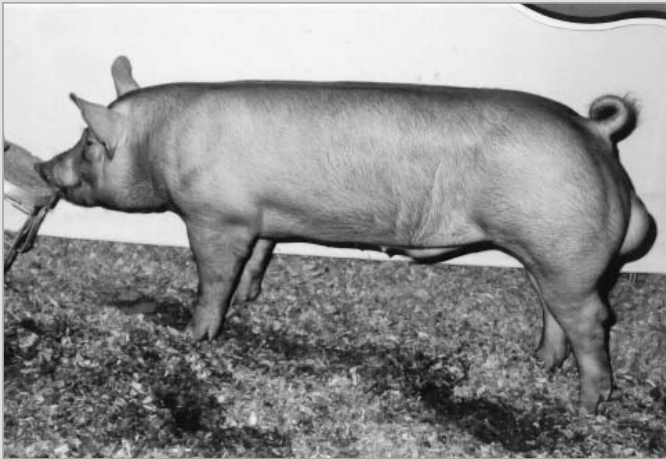
PSSS Mac's Pride 5-6
(MG Master Chaz X First Rate)
Bred by: McClaskey & McMullen
Owned by: PSS, McClaskey & McMullen

Littermate to 2009 Type Conference Champion Boar!
Sire was 2007 Type Conference Champion Boar!
Sire is 1/2 sib to 2008 Type Conference Champion Boar!
Dam was class-winning gilt at 2006 STC!
Terrific boar with broad shoulders, width & muscle!
• Frozen Semen Available in 2011 •

Maple Grove Farm

Four generatons of the Grover family have greatly enjoyed breeding, showing and selling Champion Tamworth Swine.

(1950-2011)



Our Class winning Type Conference Gilt, the Reserve Grand Champion at the Ohio State Fair was purchased by Gerrett and Ed Baker of Indiana.

Thanks to all our buyers at the farm. — We have some very nice prospects for 2011 sired by a littermate to the above boar.

Please contact us for your barrow and breeding stock needs.

Maple Grove Farm • Phil Grover

2906 Parrott Station Road • Washington C.H., Ohio 43160

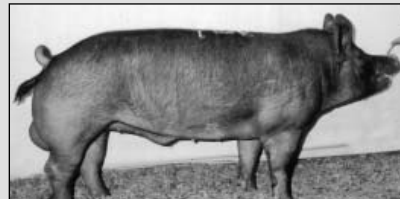
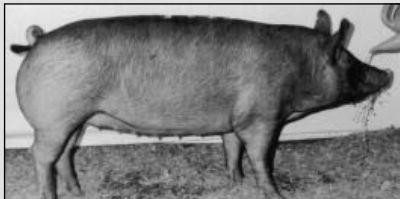
Phone 740-426-6215 • E-mail: grover.1@osu.edu



Harnacke Tams

Champion Genetics

Breeding stock and show pigs available most times.



We had a grand day at Illinois showing both Champion Boar and Gilt.

Thanks to all who have purchased from us, especially Wayne Collinridge from Canada with a boar and 2 gilts, and the Clothier's with 2 gilts from National Show.

Congratulations to our children, Cameron and Brooke, on your success last year.

Watch for pigs out at our State Fair Champion Boar and Sow purchased from Tom Fenton at National Show.

Quint Harnacke Family
1620 100th Avenue • New Holland, IL 62671
(217) 445-2506

DENNIS FARMS

TAMWORTHS



- PASTURE HARDY PIGS RAISED NATURALLY
- NO FEED GRADE ANTI-BIOTICS
- EXCELLENT GRAZERS
- NO FARROWING HUTS OR CRATES
- EXCEPTIONAL MOTHERS

WE ONLY BREED THE BEST

GREG & JANIE DENNIS
RANBURN, ALABAMA

~

GREG 770.862.7379
greg@dennis-farms.com
JANIE 770.862.2531

For more information please visit us online

www.dennis-farms.com



NOTICE

FEES FOR REGISTRATION (Effective Sept. 1, 2001)

All-in-one litter registration animals up to 90 days (Members)	20.00
All-in-one litter registration animals up to 90 days (Non-Members).....	25.00
All-in-one litter registration animals after 90 days (Members)	25.00
All-in-one litter registration animals after 90 days (Non - Members)	40.00
Each transfer (any sale, except pigs in dam) including all transfers on original application.....	3.00
Duplicate Certificate of Registration	3.00
Changing name of recorded animal	3.00
Transfer forms - (Can download on-line)	25 for 2.00
All-in-one litter registration Form - (Can download on-line)	20 for 5.00
Life Membership Fee.....	10.00
Transfer of Membership	1.00
Annual Maintenance Fee (due January 1st every year).....	25.00

ANY RUSH WORK NEEDED WITHIN 7 DAYS, FEES WILL BE DOUBLED

Junior membership free to a bona fide 4-H and FFA member up to age 21. Application blanks available from Association Office. Must be signed by Advisor or Leader.

TAMWORTH SWINE ASSOCIATION

Shirley R. Brattain-Secretary • 621 N 850 W • Greencastle, Indiana 46135-7771 • (765) 653-4913
E-Mail: INFO@TamworthSwine.org • Web Site: www.TamworthSwine.org

TAMWORTH INFORMATION:

- The National Tamworth Association is busy promoting our great grazer hogs and they are the best tasting meat for the Farm Markets. They are recognized for their great taste at these markets.
- They are super hogs for the small scale farmer, as they don't require an expensive set up and can make do with older facilities. They can farrow outside except in extreme cold. Some bedding and a shed will do.
- Tamworths have a really nice temperament and like being around people and the little pigs are lots of fun to watch as they run and play.
- We registered over 200 litters and 1700 pigs this past year—many of whom went to 4-H club members for county shows and state fairs. Tamworths have breeders in several states.
- The National Tamworth Type Convergence was held August 30-31. We had attendees from 7 states.
- There were 88 hogs entered one even farrowed at the show.

If you are thinking of buying some pigs for the family farm, to do Farmer's Markets with good tasting meat—BETTER GIVE TAMS A TRY!

The show this year will be at 12:00 noon on Sunday to give more time between the end of the show and the start of the sale. entries must be at the fairground by 5 p.m. on Saturday.

if you can't make it, please call David LaFollette and let him help you to make plans. Remember January pigs can be in the Jr. Champion classes if they were so mated at their State Fairs. motion made that if you are selling a boar in the sale that isn't a Junior Champion, you must bring a gilt to sell also. — you do not have to bring a boar to sell a gilt in the show or sale. Junior members may sell a gilt without selling a boar. Each member may sell 12 pigs—2 boars and 8 gilts. We wanted everyone to know we would like to have you join us for the National Tamworth Type Conference show and sale this year. REMEMBER—SEPTEMBER 3/4—Greencastle, Indiana. Banquet—6:30 this year.



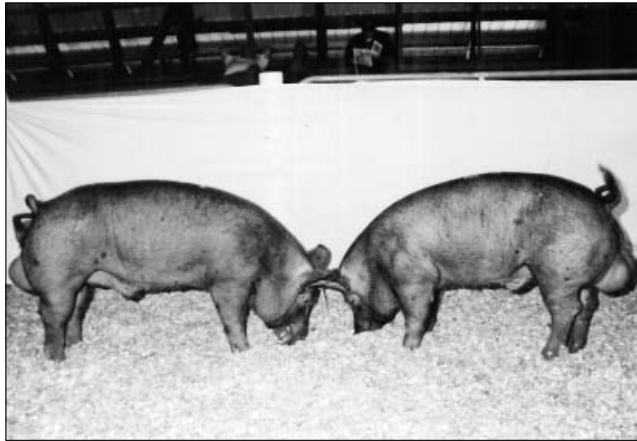
Mac's Tams
4699 E 750 S
Ladoga, IN 47954
(765) 942-2059

Larry McMullen

4699 E 750 S

Ladoga, IN 46968

(765) 942-2059



Dave McClaskey

8822 E US 136

New Ross, IN 46968

(765) 723-1326

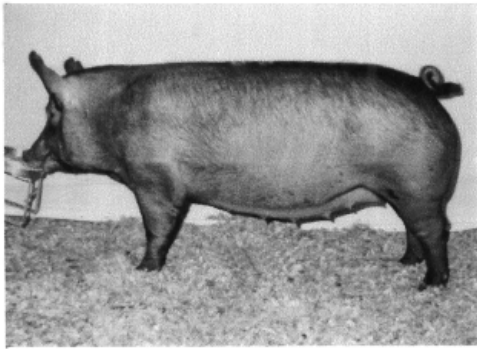
(765) 366-2119

**2010 TC Champion &
Reserve Champion Boars**

“*Home of Champions*”

- 2010 — National Champion Boar
 - 2010 — Reserve National Champion Boar
 - 2010 — National Champion Gilt
 - 2009 — National Champion Boar
 - 2009 — Littermate put in stud at Prairie State
 - 2008 — National Champion Boar
 - 2008 — Reserve National Champion Boar
 - 2008 — Indiana Swine Circuit Champion Tam Gilt,
1st place Indiana State Fair
 - 2008 — Indiana State Fair Open Champion
 - 2006 — Indiana State Fair Jr. Champion Tam Barrow
(shown by Wethington family)
 - 2005 — National Champion Tam Boar
 - 2002 — Indiana State Fair Jr. Champion Tam Barrow
(shown by Wethington family)
- Several County Fair Champions and Reserves





Champion Bred Gilt at the 2010 National Tamworth Show and Sale.

Club Pig and Lamb Sale

Saturday, April 2, 2011
Hog Sale at 6:00 PM EST
Viewing at 4:00 PM EST

We will be offering eight different breeds plus crossbreds: Chester White, Duroc, Hampshire, Hereford, Landrace, Spots, Tamworth, Yorkshire, and Crossbreds.

Auctioneer: Bob Moore

Terms: Cash, Check, MasterCard, Visa

Please call for specific breed quantities. All announcements made sale day take precedence over printed material. Not responsible for accidents. Sale located 6.5 miles east of New Carlisle, IN or 2 miles west of the US 31 bypass on US 20 to the flashing light (Quince Rd.), north 1 mile to Darden Rd., west 1.5 miles to sale.

Doug Millar
(574) 289-9675
(574) 298-3722
millars4@yahoo.com

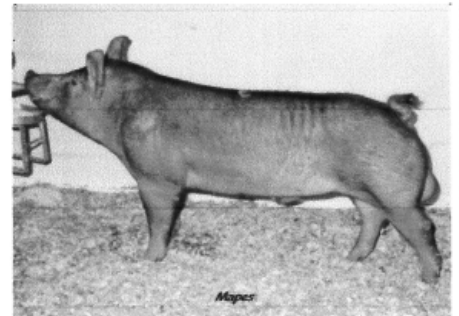
Sale Day Phone
(574) 220-6508
(574) 298-3722

Brad and Kelley Bradshaw
(574) 233-3745
(574) 220-6508

****At the 2010 National Tamworth Show we placed well and were able to share our genetics around the country. Thanks to all of our buyers! Look for 2011 pigs out of the Grand Champion Boar at Type Conference, "Golden Dome." We have breeding stock for sale year round.****

Sale Location:
Doug Millar Farms
27947 Darden Road
New Carlisle, IN 46552

Champion
Junior Boar
at Wisconsin
State Fair.



BRATTAIN FARMS TAMWORTHS



RESERVE GRAND CHAMPION

The Winning Way!

Try a Tam – You'll Like Them!

Great for Farmer's Markets – Ideal Grazer

Pigs – What a Flavor – Really Great Mothers

Great Show Pigs!

Breeding Stock Available, 4-H Pigs

4-H SALE APRIL __, 6:30 pm

Tamworth, Hereford, Other Breeds

BRATTAIN FARMS

Marshall & Shirley Brattain

621 N 850 W, Greencastle, Indiana 46135

Ph: (765) 653-4913 • E-mail: brattainfarms@webtv.net



McDERMIT GENETICS

- Tamworth* 4-H Pigs (*January & February*)
- Tamworth* Breeding Stock
- Tamworth* Feeder Pigs
- 4-H Lambs
- Pigs and lambs available for freezer

High quality, but quantity is limited due to downsizing.
It is advisable to reserve early.

George McDermit & Family

4726 S. County Road 300 W.
Greencastle, Indiana 46135
Home: 765-653-4342
Cell: 765-719-0242 (after 7 p.m.)
E-mail: mcdermitgenetics@comcast.net

*If you need a Tamworth that
looks like a Tamworth and
breeds on their own,
give us a call.*

**New herd sire is from Fenton Brothers*



Registered Tamworth

Raised on Certified
Organic Feed

EARTH ONE LLC
Roseburg

Oregon

earth1@wildblue.net
(541)784-9024
web.me.com/earth.one

The above photo was the first place winner in a contest held by the ALBC Conservancy in 2009.



**The South's
and Midwest's
source for
Quality Tams!**

Leaning Pine Farms LLC Registered Tamworths

Show pigs, Breeding stock, and Feeder Pigs

January litters by
DP9 9-1 the winner of Class 7 at
2009 National Show

Out of following dams:

*LP8 Candy 1-1 (produced 2 class
winners at the 2009 National Show)

*LP9 Candy 2-1 (winner of Class 14
at the 2009 National Show and
daughter of the 2008 National
Grand Champion Boar, LM8 Master
Chas 4-7)

*PF9 14-9 (2009 Indiana State Fair
Junior Champion gilt)

*LP9 Candy 2-8 (daughter of 2008
National Grand Champion Boar, LM8
Master Chas 4-7)



4 week old gilt by LMS Master Chas 4-7

Performance on Pasture or in the Pen

Dr. John S. Bruner

Jase Bruner

473 Edward Meece Rd.

Science Hill, KY 42553

606-271-0582

jnosbruner@msn.com

Leaning Pine pigs had continued success in
2009, winning all the classes they com-
peted in at the National Show (3 out of 3).

Pigs sold to satisfied customers in TX,
PA, SC, NC, KY, TN, AL, WA, GA, IN



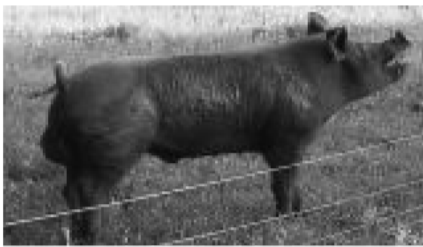
Whistleberry Farm

Nila Robinson, Prop.

Gourmet Pork From Pastured Tamworths

Raising Hardy, Active Foragers And Grazers
With Genetics From Well-Recognized Breeders Throughout The Midwest

Breeding Stock Often Available



Email: goodfood@whistleberryfarm.com
Website: www.whistleberryfarm.com

N4807 Kettner Road, Shiocton, WI 54170
(920) 986-3472 (920) 540-3900



*Local Pastured Meat
Tamworth Pigs
Belted Galloway Cattle*



**Pasture Raised Registered Breeding Stock
& Feeder Pigs available Year Round**

Nancy LaRowe • Dave Yesman
97 Kerwin Hill • Norwich, VT 05055
802/649-8807 • info@hogwashfarm.com

SWENSON FARMS TAMWORTHS

Sound Pasture-raised
breeding stock
available at most times

Registered Tamworths

Most of 2011 Pigs are out of
GM10 Duke 2-10 purchased at
2010 National Type Conference
sale from George McDermit.

Glenn Swenson
2935 N 4750 Road
Sandwich, IL 60548
Phone: (815) 786-2786



Emerald Farms

REGISTERED TAMWORTHS

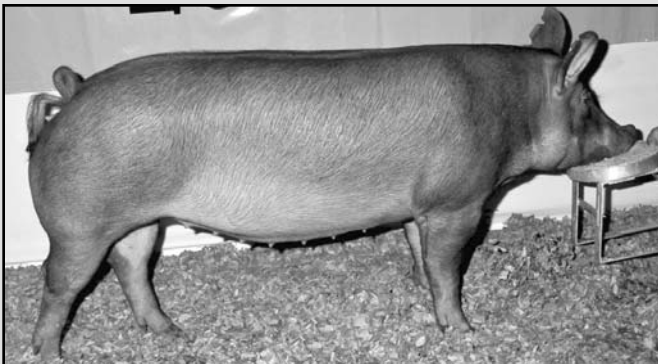
We strive for genetics that produce large uniform litters.



Res. Ch. Boar Ohio State Fair 2009
Sold to Boucher Tamworths, Ill.



Res. Sr. Ch. Boar Indiana State Fair 2009
Sold to Brattain Farms, LaFollette & Koopman, Gulick Family



Res. Ch. Gilt Ohio State Fair 2009



Res. Ch. Gilt Indiana State Fair 2009

Special thanks to the Heavilin Family, Oh. and Larry McMullen, Ind. for purchase of the Ch. and Res. Ch. Bred Gilt 2009 National Show and Sale respectively.

***Thanks To All The Buyers Who Have Purchased From Us
And Shown Confidence In Our Breeding Program.***

For other livestock needs please contact us about Registered Ayrshire Cattle, Boer Goats, Club Calves.

fentonshowcattle.com • emeraldcrossingboergoats.homestead.com

Fenton Brothers
22050 St. Rt. 136
Winchester, Ohio
(937) 695-0697

Tom & Connie Fenton
200 Centenary Rd.
Winchester, Ohio
(937) 695-0114
email: fentontcrl@localnet.com

2011 Breeder's Directory

ALABAMA:

Dennis Farms – Greg and Janie Dennis • 1582 CR 852 • Ranburne, AL 36273 • (770) 862-7379 • www.dennis-farms.com • gred@dennis-farms.com
Grace Valley Farm • Michael & Lynn Thompson • 638 County Road 362 • Trinity, AL 35673 • (256) 974-9777 Cell (256) 476-4177 • churchmedia@aol.com

ILLINOIS:

Quint Harnacke • 1620 100th Avenue • New Holland, IL 62671 • (217) 445-2506
Glenn Swenson • 2953 N 4750 Road • Sandwich, IL • (815) 786-2786
Prairie State Semen Inc. • 968 Co. Road 1000 • N. Champaign, IL • (800) 282-0428

INDIANA:

Baker's Tamworth • Ed & Becky Baker • 4825 N Regna Place • West Terre Haute, IN 47885 • (812) 535-3643
Brattain Farms • M & S Brattain • 621 N 850 W • Greencastle, IN 46135-7771 • (765) 653-4913 • brattainfarms @ webtv.net
Don Dawson • 3621 N 1175 W • Kempton, IN 46209-9322 • (765) 947-5255
Doug Millar & Family • 27947 Darden Road • New Carlisle, IN 46552 • Doug (574) 289-9675; • Bread (574) 233-3745
Dave LaFollette • 9680 E 550 N, Darlington, IN 47940 • (765) 794-0203
Garrit Koopman & Family • 8297 N Old St. Rod. 55 • Wingate, IN 47994 (765) 275-2296 • koop1981@hotmail.com
George McDermit, McDermit Genetics • 4726 S. CR 300 W, Greencastle, IN 46135 • (765) 653-4342 • mcdermitgenetics@comcast.net
Jeff Gulick & Family • 816 Bur Oak Court • E-Lafayette, IN 47909
Larry McMullen • 4699 E 750 S • Ladoga, IN 47954 • (765) 942-2059 • Cell (765) 376-9986
Dave McClaskey • 8822 E US 136 • New Ross, IN 47968 • (765) 723-1326 • Cell (765) 366-2119

KENTUCKY:

Leaning Pine Farms • John Bruner • 473 Edward Meece Roads • Science Hill, KY 44253 • (606) 271-0582

MASSACHUSETTS:

Winnimuset Farm • Sharon Hamel/Sean Munzert • 580 Wine Road, • New Braintree, MA 01531 • (413) 477-6294 • winnemussetfarm@localnet.com

NEW HAMPSHIRE:

Lisa Richards • Mack Hill Farm • 35 Mack Hill Road • Marlow, NH 03456 • (603) 446-6261 • lisa@mackhillfarm.com

NORTH CAROLINA:

D & E Swine Farm • Clarence Durham • 470 Andres Store Road • Pittsboro, NC 27312 • (919) 933-2969

OHIO:

Fenton Brothers • 22050 State Road 136 • Winchester, OH 45697 • (937) 695-0014
Tom & Connie Fenton • 200 Centenary Road • Winchester, OH 45697 • (937)695-0014
Maple Grove Farms • 2906 Parrott Station Road • Washington C.H., OH 45150 • (740) 426-6215
Spring Hill Farm • David T. Fogle • 5757 Spring Hill Road • Newark, OH 43056 • (606) 271-0582
Paul Morrison & Family • 2802 Weaver Station Road • New Madision, OH 45346 • (937) 996-5491 • Cell (937) 459-0389

VIRGINIA:

Larry Bright • 794 Spangler Mill Road • Floyd, VA 24091 • (540) 745-5790
Carles Lynn Barnes • 771 Barbours Creek Road • New Castle, VA 24127-9947 • (540) 864-5230

VERMONT:

Hogwash Farm • 97 Kerwin Hill Road • Norwich, VT 05055 • (802) 649-8807
Green Mountain Heritage Farm • Matt & Michelle Whalen Family • 3354 Pepper Road • Chelsea VT 05038 • (802) 685-4348 • vtheritagefarm@yahoo.com
Vermont Heritage Gracers, LLC • 2175 East Street • Bridport, VT 05734-0116 • (802) 758-5040 • alethea@gmavt.neet

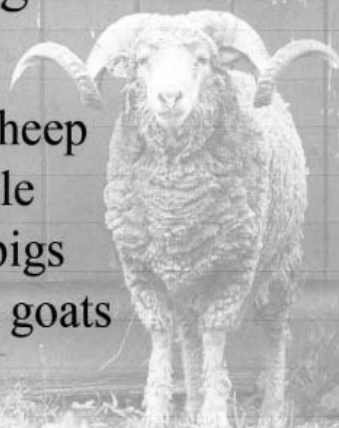
WISCONSIN:

Nila Robinson • 4807 Kettner Road • Shiocton, WI 54170 • (902) 986-3472
Together Farms, LLC • Andy & Stephanie Schneider • W 93 Norden Road • Mondovi, WI 54755 • (715) 926-5009 • andyschneider8@gmail.com



A New England source for:

Santa Cruz sheep
Kerry cattle
Tamworth pigs
San Clemente goats



USDA inspected & approved farm raised meat for sale. Individual cuts, half, or whole carcass available. Call us for rates!

THE INN  at EAST HILL FARM
460 Monadnock Street
Troy, New Hampshire 03465
www.east-hill-farm.com 1-800-242-6495

Tamworth-Ducoc litter due around mid-May.

Piglets should be ready to go to homes in mid-July. Pigs are fed organic feed, garden produce grown on our ranch, and occasional produce offerings from our local grocery store. — \$80



Contact Tara Felder

509.560.4331

www.3BellsRanch.com



Breeding Stock For Sale
from Mack Hill Farm in Marlow, NH

Genetics from King Bird Farm in NY, Hogwash Farm in VT, and East Hill Farm in Troy, NH. Four boars born in August 2010 available. Weaners expected all spring long.

We don't castrate our boys as we don't have boar taint in our herd.

Good temperament, trained to electric, raised outside year round. References available.

Contact Frank Richards,
frank@mackhillfarm.com • 603-446-6261

JUNIOR MEMBERSHIP APPLICATION

I hereby make application for Junior Membership in the Tamworth Swine Association. I agree to abide by the Constitution and By-Laws of the Association.

Signature of Applicant _____

Address _____

Date of Birth _____

The above applicant is a member of the

Name of 4-H or FFA Chapter _____

Date _____

Signature of FFA Advisor, 4-H Club Leader County Ext. Agent or 4-H Ext Agent _____

----- CUT ALONG DOTTED LINE -----

SENIOR MEMBERSHIP APPLICATION

Tamworth Swine Association
621 N 850 W

Greencastle, IN 46135-7771

Gentlemen:

I hereby make application for membership in the Association. I agree to abide by the Constitution and By-Laws of the Association. Enclosed is \$10.00 for membership fee.

Signature or Firm Name _____

Address _____

Date _____ Phone No. _____

E-mail Address _____



Baker's Tamworth Hogs

Ed and Becky Baker

4825 North Regan Place

West Terre Haute, IN 47885

(812) 535-3643



E&B 07 2-4

Grand Champion Boar at Indiana State Fair.

A special thanks to all who have purchased our hogs in the past.

APPLICATION FOR REGISTRATION TAMWORTH SWINE ASSOCIATION

621 N 850 W
Greencastle, IN 43135-7769

LITTER
NUMBER

PLEASE
PRINT
PLAINLY

RE IMPORTANT
Show Litter Notch
Litter Notch Must
Be in Right Ear

ALL PIGS MUST BE EAR NOTCHED WITH THE UNIVERSAL SYSTEM.

Date Born _____ No. Pigs Born _____ No. Raised: Boars _____ Sows _____

Registered within 90 days of birth Members \$20 Non members \$25
Registered after 90 days of birth Members \$35 Non members \$40

Owner _____ (Owner of sow at the time litter was farrowed) Address _____ Town _____ State _____

Breeder _____ (Owner of sow when she was bred.) Address _____ Town _____ State _____

Pedigree of Litter

Must be completely filled out

SIRE _____ Reg. No. _____

Sire of Sire _____ Reg. No. _____

Dam of Sire _____ Reg. No. _____

DAM _____ Reg. No. _____

Sire of Dam _____ Reg. No. _____

Dam of Dam _____ Reg. No. _____

SERVICE CERTIFICATE FOR BRED SOW ONLY

Sow No. _____ Date of Service _____ Service Boar No. _____

Owned by _____
(Signed by Owner of Service Boar at Time of Mating.)

Individual Pigs in Litter

Please Read Instructions. All eligible pigs MUST be recorded at the same time.

BOARS (Name Limited to 30 spaces) **GILTS**
Herd Mark - Year Name Ear Notch Year Name Ear Notch

Name _____	Name _____
Buyer _____	Buyer _____
City, State _____	City, State _____
Sale Date _____	Sale Date _____
Name _____	Name _____
Buyer _____	Buyer _____
City, State _____	City, State _____
Sale Date _____	Sale Date _____
Name _____	Name _____
Buyer _____	Buyer _____
City, State _____	City, State _____
Sale Date _____	Sale Date _____
Name _____	Name _____
Buyer _____	Buyer _____
City, State _____	City, State _____
Sale Date _____	Sale Date _____
Name _____	Name _____
Buyer _____	Buyer _____
City, State _____	City, State _____
Sale Date _____	Sale Date _____
Name _____	Name _____
Buyer _____	Buyer _____
City, State _____	City, State _____
Sale Date _____	Sale Date _____

I certify the above Tamworth pigs are eligible to register according to the rules of registry

Signature _____

TAMWORTH ORIGIN AND HISTORY

The Tamworth originated in Ireland where they were known as "Irish Grazers", being given that name due to the fact that they were such wonderful foragers. About 1812 Sir Robert Peel, being impressed with the characteristic of these hogs imported some of them to his estate at Tamworth, England. It is from this place they derived their name. An English authority, who calls it the "Mahogany" or "Grizzly" pig, says it was extensively bred in several of the midland counties of England early in the nineteenth century. When the droves were mainly kept in the woods and forests. They are not a composite breed, and are thought by many to be one of the oldest and purest breeds in Britain.

THE TAMWORTH BEFORE IMPROVEMENT

They were long of limb, long in the snout and flat in the rib. They were active, hardy, good rustlers, and very prolific, but they were slow feeders and late in maturing.

THE IMPROVEMENT OF TAMWORTHS

This has been almost entirely effected through selection, judicious breeding, and management. It is now pretty generally conceded that the blood of other breeds has not been used to any extent in the improvement of Tamworths. Tamworths have been used in developing other breeds in the United States.

WHEN IMPROVEMENT WAS EFFECTED

They appear to have been improved to a considerable extent before the middle of the 19th Century, as they were given First Honors at the Royal Agricultural Society's Show when competing with large breeds as early as 1847. But subsequent to this period they sank into obscurity, and were only known in some local districts. About 1877 a demand grew up for more hogs of the bacon type, and breeders of Tamworths brought their favorites to the front in England.

THE FIRST TAMWORTHS IN THE UNITED STATES

The first Tamworths in the United States were those imported by Thomas Bennett of Rossville, Illinois in 1882. In the following decade, Tamworths were also imported into Canada and the breed gradually became known in both countries. The Tamworth has two characteristics for which it was entitled to preeminence; i.e.; an unusual proportion of lean meat, and large litters of pigs; also that Tamworths will make as many pounds of gain, largely lean meat, from a given weight of feed as will hogs of any other breed. From these early imports, the Colorado agricultural College's three year farm average for all sows was ten live pigs to a litter. A two-year old sow weighing 750 pounds had 18 live pigs at one farrowing, and a Tamworth at the Iowa Agricultural College raised 33 pigs in one year.

ORGANIZATION

Tamworth Swine are protected by registration in Great Britain, the United States and Canada. The American Tamworth Swine Record Association was organized in 1897.

SWINE GESTATION TABLE																																	
115 DAYS																																	
Bred Jan.	1	2	3	4	5	6	7	8	9	10	11	12	13	14	15	16	17	18	19	20	21	22	23	24	25	26	27	28	29	30	31	-	Jan.
Farrow Apr.	26	27	28	29	30	1	2	3	4	5	6	7	8	9	10	11	12	13	14	15	16	17	18	19	20	21	22	23	24	25	26	-	May.
Bred Feb.	1	2	3	4	5	6	7	8	9	10	11	12	13	14	15	16	17	18	19	20	21	22	23	24	25	26	27	28	-	-	-	-	Feb.
Farrow May	27	28	29	30	31	1	2	3	4	5	6	7	8	9	10	11	12	13	14	15	16	17	18	19	20	21	22	23	-	-	-	Jun.	
Bred Mar.	1	2	3	4	5	6	7	8	9	10	11	12	13	14	15	16	17	18	19	20	21	22	23	24	25	26	27	28	29	30	31	-	Mar.
Farrow Jun.	24	25	26	27	28	29	30	1	2	3	4	5	6	7	8	9	10	11	12	13	14	15	16	17	18	19	20	21	22	23	24	-	Jul.
Bred Apr.	1	2	3	4	5	6	7	8	9	10	11	12	13	14	15	16	17	18	19	20	21	22	23	24	25	26	27	28	29	30	-	-	Apr.
Farrow Jul.	25	26	27	28	29	30	31	1	2	3	4	5	6	7	8	9	10	11	12	13	14	15	16	17	18	19	20	21	22	23	-	Aug.	
Bred May.	1	2	3	4	5	6	7	8	9	10	11	12	13	14	15	16	17	18	19	20	21	22	23	24	25	26	27	28	29	30	31	-	May.
Farrow Aug.	24	25	26	27	28	29	30	31	1	2	3	4	5	6	7	8	9	10	11	12	13	14	15	16	17	18	19	20	21	22	23	-	Sep.
Bred Jun.	1	2	3	4	5	6	7	8	9	10	11	12	13	14	15	16	17	18	19	20	21	22	23	24	25	26	27	28	29	30	-	-	Jun.
Farrow Sep.	24	25	26	27	28	29	30	1	2	3	4	5	6	7	8	9	10	11	12	13	14	15	16	17	18	19	20	21	22	23	-	Oct.	
Bred Jul.	1	2	3	4	5	6	7	8	9	10	11	12	13	14	15	16	17	18	19	20	21	22	23	24	25	26	27	28	29	30	31	-	Jul.
Farrow Oct.	24	25	26	27	28	29	30	31	1	2	3	4	5	6	7	8	9	10	11	12	13	14	15	16	17	18	19	20	21	22	23	-	Nov.
Bred Aug.	1	2	3	4	5	6	7	8	9	10	11	12	13	14	15	16	17	18	19	20	21	22	23	24	25	26	27	28	29	30	31	-	Aug.
Farrow Nov.	24	25	26	27	28	29	30	1	2	3	4	5	6	7	8	9	10	11	12	13	14	15	16	17	18	19	20	21	22	23	24	-	Dec.
Bred Sep.	1	2	3	4	5	6	7	8	9	10	11	12	13	14	15	16	17	18	19	20	21	22	23	24	25	26	27	28	29	30	-	-	Sep.
Farrow Dec.	25	26	27	28	29	30	31	1	2	3	4	5	6	7	8	9	10	11	12	13	14	15	16	17	18	19	20	21	22	23	-	Jan.	
Bred Oct.	1	2	3	4	5	6	7	8	9	10	11	12	13	14	15	16	17	18	19	20	21	22	23	24	25	26	27	28	29	30	31	-	Oct.
Farrow Jan.	24	25	26	27	28	29	30	31	1	2	3	4	5	6	7	8	9	10	11	12	13	14	15	16	17	18	19	20	21	22	23	-	Feb.
Bred Nov.	1	2	3	4	5	6	7	8	9	10	11	12	13	14	15	16	17	18	19	20	21	22	23	24	25	26	27	28	29	30	-	-	Nov.
Farrow Feb.	24	25	26	27	28	1	2	3	4	5	6	7	8	9	10	11	12	13	14	15	16	17	18	19	20	21	22	23	24	25	-	Mar.	
Bred Dec.	1	2	3	4	5	6	7	8	9	10	11	12	13	14	15	16	17	18	19	20	21	22	23	24	25	26	27	28	29	30	31	-	Dec.
Farrow Mar.	26	27	28	29	30	31	1	2	3	4	5	6	7	8	9	10	11	12	13	14	15	16	17	18	19	20	21	22	23	24	25	-	Apr.

2010 TUNBRIDGE WORLD'S FAIR SWINE SHOW



In September of 2010 the third annual swine show took place at the Tunbridge World's Fair in Tunbridge, Vermont. Fifteen exhibitors brought a total of twenty five hogs with two litters of piglets. Of the twenty five entries ten were Registered Tamworth. For those unaware of the significance of this show, It is the only show in Vermont and one of three in New England. Our judge this year was Dr. Steven Moeller from Ohio State University. Dr. Moeller found our show to be quite refreshing with the emphasis on participation rather than competition. This year there were quite a few young juniors making their first trip into the show ring. This was likely the highlight of the show with twelve juniors competing, seven of whom had never shown before.

The Grand Champion for the Junior division was a Tamworth Sow, WF Tracy, owned and shown by Daniel Caterino of Weir, New Hampshire. The Grand Champion of the Jr. showmanship class was Aidan Merriam of Braintree, VT. The Grand Champion of the Sr. showmanship class was Daniel Caterino of Weir, New Hampshire. In the Open division the Champion Commercial gilt was a Tamworth owned and shown by Michael Whalen of Tunbridge, VT. The Champion Registered gilt was a Tamworth owned by Matt & Michelle Whalen and family and shown by Addienna Luke-Currier. Both Champion Market Hog classes were won by Alethia Bahnk of Middlebury, VT. The Champion Sow was BF7's Anna, owned by Matt & Michelle Whalen and family. Anna was also the Reserve Grand Champion of the Open division. The Champion Boar and overall Grand Champion of the Open division was a registered Tamworth Boar, Green Mountain 10 Rocket, owned and shown by Matt & Michelle Whalen and family of Chelsea, VT.

The show continues to gain popularity at the Fair. Many of the folks working at the Fair made sure to stop by and watch the majority of the show, especially the young juniors. One group of dedicated fans even closed down the fair's administrative office for the afternoon so as not to miss the big event! The young juniors, a class of four, five and six year olds, stole the show with smiles and laughter throughout the crowd. We have heard many times from spectators that the Swine show is one of the best parts of the Fair. The growth of the show is very steady with the expansion from last summer being completely utilized in its first year. Once again we would like to thank the exhibitors one and all for pitching in behind the scenes, Dr. Steven Moeller for an outstanding educational presentation to both the crowd and the exhibitors and to Shirley Brattain for always being there to offer guidance. One of these years I think we might just convince her to come see this great little show she helped get started.



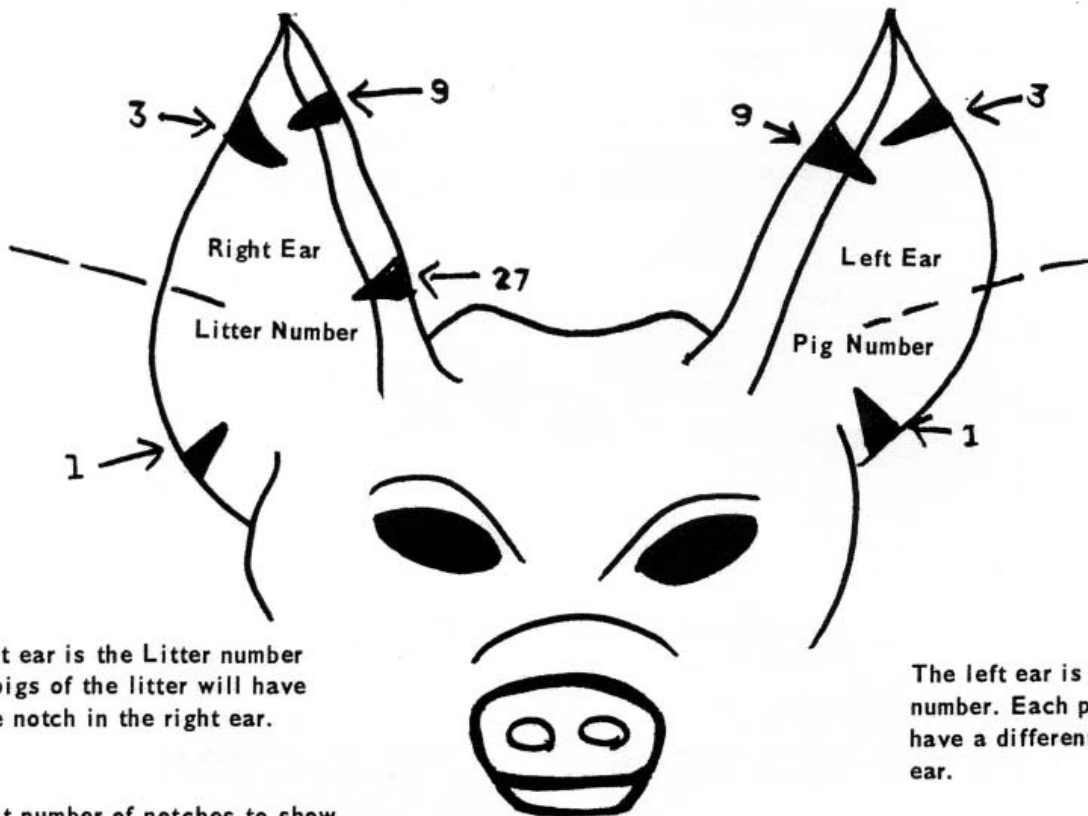
Submitted by Matt Whalen
Superintendent of Swine
Tunbridge World's Fair

TAMWORTH EAR NOTCHING SYSTEM

Guide for showing location and value of ear notches for marking litters and individual pigs. Breeders may change over to this system in 1966.

THIS IS THE ONLY SYSTEM WHICH WILL BE PERMITTED AFTER JANUARY 1, 1967

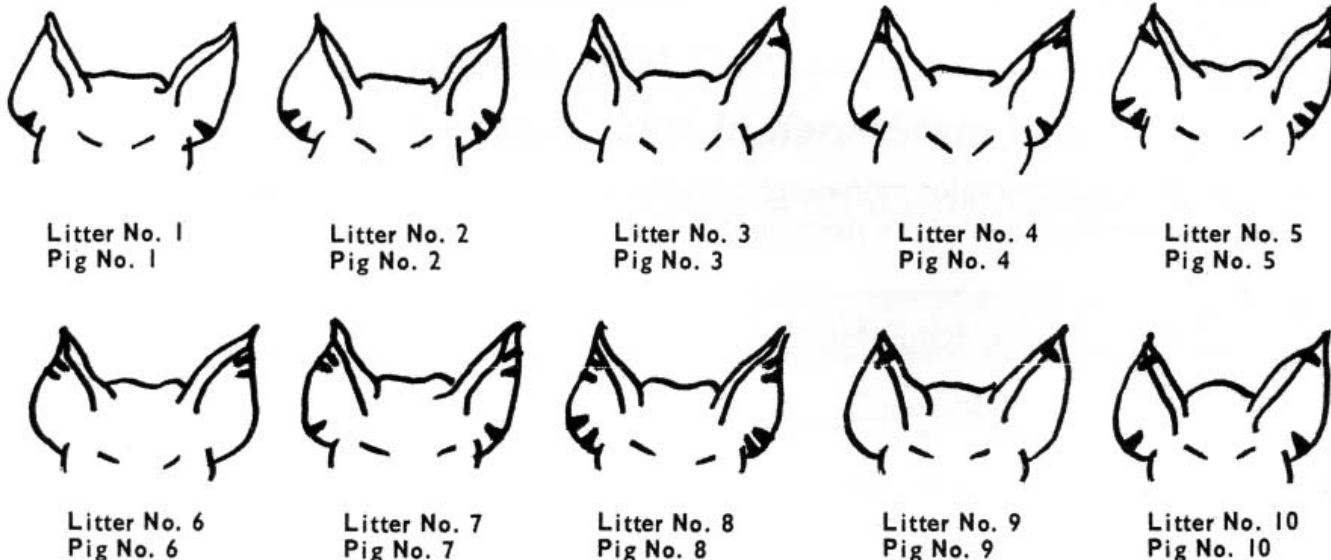
Number litters consecutively for one calendar year. Start over with Number 1 at the beginning of each year. The Association may refuse to register or certify for showing any animal not properly ear marked. All pedigrees sent in for recording must be made out on the blanks of this Association.



The right ear is the Litter number and all pigs of the litter will have the same notch in the right ear.

The left ear is the pig's specific number. Each pig in a litter will have a different notch in the left ear.

Use least number of notches to show number.



To avoid confusion when showing the ear notches on a Litter Report Card, or Pedigree Application Card, indicate notches by a single straight line thusly:



This would be Litter No. 13 Pig No. 16



THE *bacon* PIG'

the 'bacon pig'



Heritage hogs have earned a mouthwatering reputation

by Marilou Suszko

Most people would rather spend their time eating crispy, smoky strips of bacon than studying the breed it came from, but when a pig has earned the nickname “the bacon pig,” it deserves a closer look.

Ohio Farm Bureau members Paul and Marilyn Morrison raise this special “bacon” breed called the Tamworth on their 350-acre Darke County farm as show pigs and breeding stock for pork producers throughout Ohio, New York and as far west as Missouri and Arkansas.

“I’ve raised just about every breed of meat pig over the past 20 years,” Morrison said. “What makes Tamworths special is that they grow slowly so they are leaner with just the right amount of belly fat.” That’s what you look for in good bacon: lean, finely grained meat balanced with ribbons of fat running throughout.

The Tamworth originated from central England and was imported to America in the early 1800s. Considered a heritage breed, it is the result of centuries of breeding to preserve unique and desirable genetic traits including ones that help it resist disease and tolerate local environmental conditions.

On Morrison’s farm, 10 hefty Tamworth sows, between 500 and 600 pounds each, keep company with other heritage breeds like Poland Chinas and Herefords, all valued for quality meat production. Morrison and other small-scale producers regard these breeds as hardy and perfectly suited for outdoor production. Morrison routinely crossbreeds Berkshires — another heritage breed, quite fatty and a historical favorite of Britain’s Royal family — with the Tamworth. The result is an animal with superior meat tenderness and palatability.

While Morrison feeds his herd soybeans and corn from his fields, he describes them as excellent foragers. “A hundred years ago, Tamworths lived on wild acorns and berries,” he said. Their wiry, ruddy red coats protected them from the sun and helped them adapt to a variety of weather conditions, and strong, sturdy legs helped them walk long distances to forage for their food. Despite these ideal traits, Tamworths began to fall out of favor with some producers. “They didn’t do well in confinement and put on weight too slowly,” Morrison said.

Morrison points out that the Tamworth is considered a threatened breed, a concern supported by the American Livestock Breeds Conservancy (ALBC), a nonprofit organization whose mission is to protect and conserve rare and historic breeds of livestock and poultry. But the swine with a reputation all wrapped up in bacon is making a comeback. The Tamworth Swine Association reports that approximately 2,500 Tamworths exist through the world with the vast majority found in the United States. Many producers are paying renewed attention to the merits of the breed, which include good mothering skills, their ability to be efficient grazers and high meat to bone ratio.

Consumers have also played an important role in the revival of heritage breeds including the Tamworth as they experience the rich genuine flavor of the meat, especially the bacon, which when cooked is lean, distinct and delicious. But then, it’s bacon. What’s not to love?

Marilou Suszko is a food writer from Vermilion. She is the author of *Farms and Foods of Ohio: From Garden Gate to Dinner Plate* and hosts *From My Ohio Kitchen to Yours* on the *Our Ohio* TV series.

Reprinted from September-October Issue of “Our Ohio” Magazine

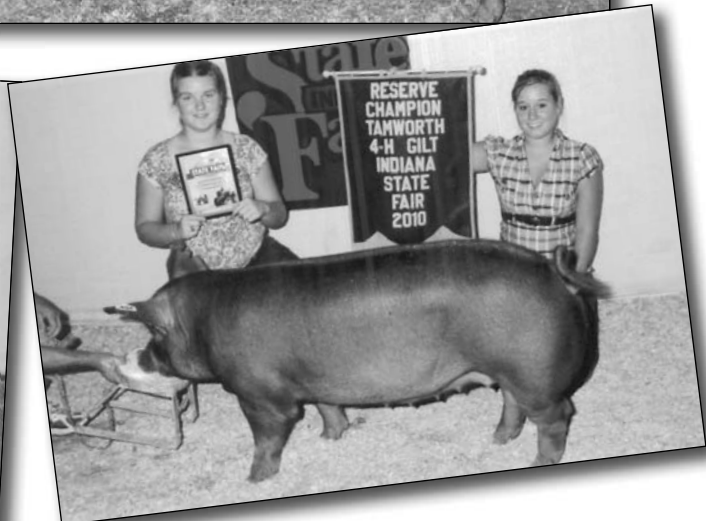
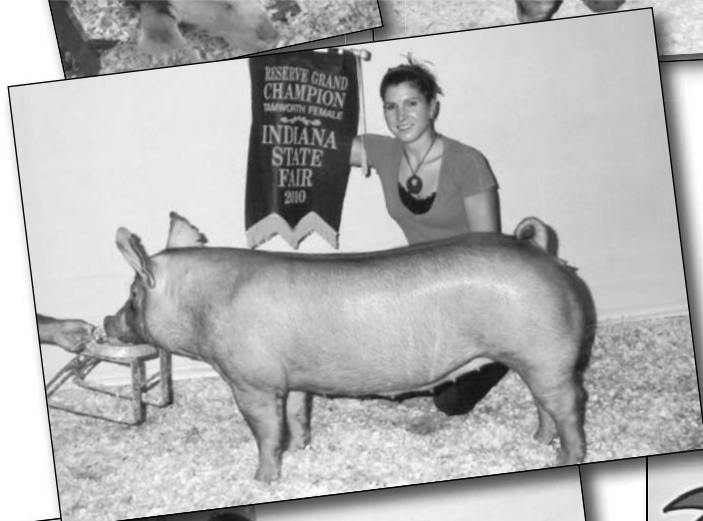


Heritage breed hogs, like the Tamworth, are purebred animals that have historically been raised by farmers. However, their numbers fell as contemporary hog farmers relied more on mixed breeds to get combinations of desirable traits.

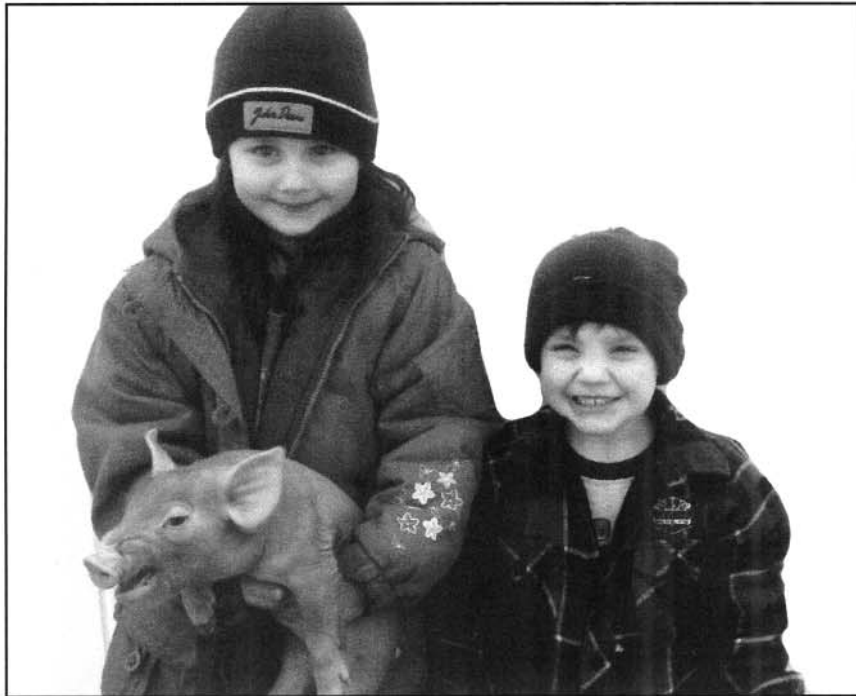


Paul and Marilyn Morrison raise hogs in western Ohio.
“Fairs are like beauty contests for pigs — it has a lot to do with looks.” ~Paul Morrison

YOUTH OF TODAY



LAFOLLETTE & KOOPMAN SHOWPIGS



Producing Quality Tamworth's and Hereford's since 2002

Thanks to all of our Buyers for your purchases this past year and we look forward to helping with your Tamworth and Hereford needs in the future.

Dave Lafollette & Family

9680 E 550 N

Darlington, IN 47940

(765) 794-0203

(765) 366-8655 Cell

lafollette1958@hughes.net

Garritt L Koopman & Family

8297 N Old St Rd 55

Wingate, IN 47994

(765) 275-2296

(765) 376-7750 Cell

koop1981@hotmail.com

***CONGRATULATIONS ON BEING NAMED CHAMPION
TAM BARROW AND GRAND OVERALL BREEDS
AND CROSSES CARCASS BARROWS.***

JUST MORE PROOF OF THE GREAT POTENTIAL OF THE TAMWORTH BREED!

BUCKEYE PRIVATE TREATY PIG SALE

2 P.M. APRIL 11, 2010

PREBLE COUNTY FAIRGROUNDS, EATON, OHIO

PAUL MORRISON & FAMILY

2802 WEAVER STATION ROAD

NEW MADISON, OHIO 45346

HOME: (937) 996-5491 • CELL: (937) 459-0389

TAMWORTH SWINE ASSOC.

621 N 850 W

Greencastle, IN 46135-7771

Farms Feed America