



Welcome to the Annual Publication of the
TAMWORTH SWINE ASSOCIATION



WWW.TAMWORTHSWINE.ORG

TAMWORTH ONLINE

Visit our new website at www.TAMWORTHSWINE.ORG

Welcome to the Official Website of the
TAMWORTH SWINE ASSOCIATION



www.TAMWORTHSWINE.ORG

ADVERTISE on www.TamworthSwine.org — 2012 RATE CARD

HOME Categories Breeders News Press Videos Youth Officers About RSS Feed

WELCOME To The TAMWORTH SWINE ASSOCIATION Website



The Tamworth is one of the oldest pig breeds. It is the most direct descendant of the native pig stock of Europe that in turn descended from wild boars. The breed originated in the Midlands of England and takes the name of the town Tamworth in Staffordshire. It appears, while in Ireland in 1809, Sir Robert Peel was impressed by a breed of pig referred to as the "Irish Grazer". He imported several to his Drayton Manor Estate at Tamworth, about 1812. (Apparently Irish Grazers were imported into the USA and became extinct there in the nineteenth century.) Much of the improvement of the breed took place in Staffordshire and also in the counties of Warwick, Leicester and Northampton, England. It is unknown whether the improvement was made solely by selection but most experts believe that improvement of the breed could only have been accomplished by crossbreeding.

Continue reading "WELCOME To The TAMWORTH SWINE ASSOCIATION Website" »

Posted by Tamworth Swine Association on 11/14/2011 in TAMWORTH BREED | Permalink | Comments (0)

Reblog (0) Favorite Digg This Save to del.icio.us Tweet +7 0 Like 1

SEARCH

Q-

Search

CATEGORIES

ADS — Breeders
ADS — For Sale
ADS — Products
ADS — Services
ADS — Wanted
TAMWORTH ASSOCIATION
TAMWORTH BREED
Tamworth BREEDERS
Tamworth NEWS
Tamworth PRESS
Tamworth VIDEOS
Tamworth YOUTH

On Twitter: <http://Twitter.com/TamworthSwine>

Tamworth Swine Assoc
@TamworthSwine
New! Free Tamworth Swine Association — Tamworth's official partner package of good impurities, fertilizers & great rates! <http://www.TamworthSwine.org> POB: Newmarket, Indiana USA @TamworthSwine

24 Tweets
223 Followers
85 Verified Users

Tweet to Tamworth Swine Assoc

Tweets

- Tamworth Swine Assoc @TamworthSwine
Happy Holidays to all the Tamworth Swine Association Members! [@SwineYuska](#)
- Tamworth Swine Assoc @TamworthSwine
ADVERTISE on TamworthSwine.org — 2012 RATE CARD [@SwineYuska](#) — Photo: [@SwineYuska](#)
- Tamworth Swine Assoc @TamworthSwine
ADVERTISE on TamworthSwine.org — 2012 RATE CARD [@SwineYuska](#)
- Tamworth Swine Assoc @TamworthSwine
Doop Mill Farm — Club Pig & Lamb Sale — New Cassin Indiana [@SwineYuska](#)
- Tamworth Swine Assoc @TamworthSwine
Mart's Farm — Home of Champions — Ladoga & New Hope Indiana [@SwineYuska](#)
- Tamworth Swine Assoc @TamworthSwine
Leaning Pine Farms LLC Tamworth — Solace Hill Kentucky [@SwineYuska](#)
- Tamworth Swine Assoc @TamworthSwine
United Farms — Registered Tamworths — Winchester Ohio [@SwineYuska](#)
- Tamworth Swine Assoc @TamworthSwine
British Farms Tamworths — Shirey Brattain, Greencastle Indiana [@SwineYuska](#)
- Tamworth Swine Assoc @TamworthSwine
LaFollette & Kooman Showpigs — Tamworths & Hanford [@SwineYuska](#)
- Tamworth Swine Assoc @TamworthSwine
Tamworth: The Bacon Pig — "Our Own" Magazine Story [@SwineYuska](#)

Visit the Tamworth Swine Association online at www.TamworthSwine.org and on Twitter at <http://Twitter.com/TamworthSwine> — You'll always find the latest Tamworth news, stories, online forms, ads and breeder information, as well as articles and information about upcoming events. Submit your own stories via email to SBrattain@TamworthSwine.org

Carlenna Farms

We are a pasture based farm.

Tamworth
Chester Whites
Large Black



Call for genetically matched bred gilts

Breeding Stock
Show Pigs
Gourmet Pork

Harvey E. Work, Jr.
N5435 Pine Road
Eden, WI 53019

920-579-1544
carlenafarms@yahoo.com

The Tamworth Swine Association Inc. Directors and Officers

OFFICERS

David LaFollette, President

9680 East 550 North, Darlington, IN 47940
Phone: 765-794-0203
Email: DLafollette@TamworthSwine.org

Tom Fenton, Vice President

200 Centenary Road, Winchester, OH 45697
Phone: 937-695-0014
Email: TFenton@TamworthSwine.org

Shirley R. Brattain, Secretary/Treasurer

621 N 850 W, Greencastle, IN 46135-7771
Phone: 765-653-4913
Email: SBrattain@TamworthSwine.org

DIRECTORS

- (2012) George McDermit • Greencastle, IN • 765-653-4342
- (2012) Don Dawson • Kempton, IN • 765-947-5255
- (2012) Larry Smith • New Castle, IN • 765-208-0399
- (2013) Quint Harnacke • New Holland, IL • 217-519-2754
- (2013) Tom Fenton • Winchester, OH • 937-695-0114
- (2013) David Rains • Gallatin, MO • 660-663-4135
- (2014) David LaFollette • Darlington, IN • 765-794-0203
- (2014) Paul Morrison • New Madison, OH • 937-459-0389
- (2014) Nila Robinson • Shiocton, WI • 920-540-3900

INDEX OF ADVERTISERS

Brattain Farms Tamworths.....	9
Carlena Farms.....	Inside Front
Dennis Farms Tamworths.....	6
Doug Millar Farms.....	10
Earth One, LLC.....	23
East Hill Farm.....	24
Emerald Farms.....	16
Harnacke Tams.....	8
Hogwash Farm.....	15
LaFollette & Koopman Showpigs.....	Inside Back
Leaning Pine Farms.....	15
Mack Hill Farm.....	24
Mac's Tams.....	4
Maple Grove Farm.....	3
McDermit Genetics.....	23
Mountain Meadow Tamworths.....	8
New Heritage Farms.....	6
Paul Morrison Family Tams.....	Back Cover
Prairie State Semen, Inc.....	24
Swenson Farms.....	15
Three Bells Ranch.....	24
Whistleberry Farm.....	14

FEATURES

Tamworth Website.....	Inside Front Cover
Tamworth Queens.....	2
2012 National Show & Sale.....	2
Lafayette Christmas Parade.....	3
2011 Tunbridge Swine Show.....	5
Tamworth: <i>The 'Bacon' Pig</i>	11
Youth of Today (photos).....	17
Jr./Sr. Membership Applications.....	18
Registration Application.....	19
Pedigree Information.....	20
Owner Transfer Application.....	20
Tamworth Origin & History.....	21
Swine Gestation Table.....	21
Tamworth Ear Notching System.....	22

DEPARTMENTS

Officers and Directors.....	1
Tamworth News.....	2,3
Fees for Registration.....	7
Tamworth Information.....	7
2012 Breeders Directory.....	12,13

www.TamworthSwine.org

THOUGHTS FROM DAVE

I'm hoping that everyone has had a great start to 2012. I'm excited to hear how everyone's farrowing is going. I would like to thank those who attended the 2011 National Show and Sale. If you haven't been able to join us in the past, I hope that you'll make plans to attend in 2012. The show and sale will be held in Greencastle, Indiana. The banquet will be held Saturday September 1st with the show and sale held on Sunday, Sep. 2nd.

We will again have a junior show on September 2nd. Prize money will be awarded to the top 3 placing gilts in each class with additional money awarded to the Champion and Reserve Champion overall. We will also offer showmanship classes starting with Pee Wees up to Seniors. Gilts shown in the Junior Show cannot be shown in the Breeding Show and will not be eligible for the sale.

Exciting news for the Junior members in 2012. The Tamworths have been asked to join Team Purebred at their Summer Type Conference National Jr. Summer Show, held June 27 to June 30 in Springfield, Illinois. This is a FUN and EDUCATIONAL experience for our youth. Watch the Tamworth website, www.TamworthSwine.org and the Team Purebred website, www.TeamPurebred.com for more information.

I look forward to seeing everyone at sales this spring and shows this summer.

David LaFollette, President
Phone: 765-794-0203

Email: DLafollette@TamworthSwine.org

**In 2011
Tamworth Registration
had 1535 Registrations
and 422 Transfers**



TAMWORTH NEWS



SAMANTHA PIGG



COURTNEY GULICK

TAMWORTH QUEENS

This year we are once again lucky to have two Tamworth Queens. We appreciate having these young ladies to inform the public about the Tamworth Breed of pigs. They both exhibit their Tamworth pigs at their County Fairs and also at the Indiana State Fair. They also help with the activities of the Tamworth Breed. — “Thanks” girls!

2012 Tamworth Association NATIONAL SHOW & SALE



Visit our website WWW.TAMWORTHSWINE.ORG

ANNUAL MEETING & BANQUET

SATURDAY SEPTEMBER 1ST

PUTNAM INN RESTAURANT

SHOW & SALE

SUNDAY SEPTEMBER 2ND

PUTNAM COUNTY FAIRGROUNDS

US 231 NORTH, GREENCASTLE, IN

The Tamworth Swine Association will hold the Annual Meeting & Banquet on Saturday, September 1st at the Putnam Inn Restaurant with Social Hour 6:00—6:30pm, followed by Dinner at 6:30pm. The following day, the Show & Sale will take place beginning at 12 noon concluding with the sale at 5:00pm. The Show & Sale will take place at the Putnam County Fairgrounds, US 231 North, Greencastle, Indiana.

Motels: College Castle Motel, 231 South, Greencastle, Indiana (765) 653-4167.

For information, contact

Shirley R. Brattain, Secretary, 621 N 850 W, Greencastle, IN 46135-7771

Tel: (765) 653-4913 • Email: SALE@TamworthSwine.org

Look for the latest news and updates at www.TamworthSwine.org

If you plan to attend, please let us know if you are coming by August 15th so we may have a pen room available.

Remember, the gilt you show in the Junior Show may not be shown in the regular Type Conference Show. Pigs shown in the Junior Show are not to be sold.



TAMWORTH NEWS



COURTNEY GULICK

SAMANTHA PIGG

Samantha and I decided to put together a float in the Lafayette Christmas Parade, the largest Christmas parade in the state of Indiana. We won first place in our category. Everyone came up to us asking us about the breed of Tamworths and we were very happy to tell them about the



Lafayette Christmas Parade

breed and the Tamworth Association that we have. This year Samantha and I have had a lot of fun times and we are very proud to represent the Tamworth Association and we hope that we can do it again and keep promoting the breed to other people so that our breed will become the best that it can be. We hope to see many of you at the National show this year as well!

— Courtney Gulick

Thanks to Our Buyers at the farm and the 2011 National Tamworth Type Conference.



Special thanks to David Rains and John Littlefield of Missouri who purchased the Reserve Grand Champion Boar at the Type Conference. This Reserve Grand Champion stretches our record to four consecutive Champions or Reserves at the Type Conference.

Breeding stock for sale at the farm this Summer.

Maple Grove Farm • Phil & Chas Grover
2906 Parrott Station Road • Washington C.H., Ohio 43160
Phone 740-426-6215 • E-mail: grover.1@osu.edu



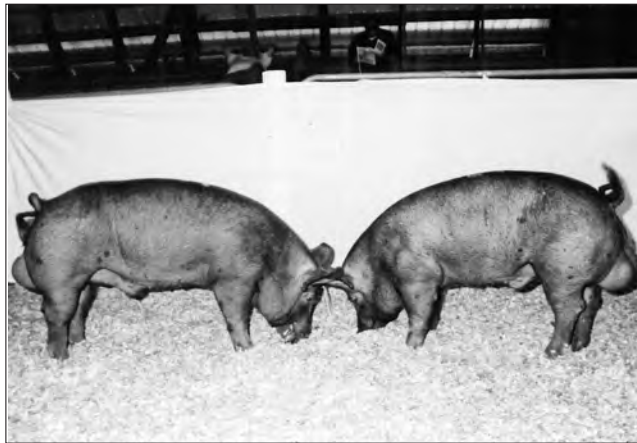
Mac's Tams
4699 E 750 S
Ladoga, IN 47954
(765) 942-2059

Larry McMullen

4699 E 750 S

Ladoga, IN 46968

(765) 942-2059



Dave McClaskey

8822 E US 136

New Ross, IN 46968

(765) 723-1326

(765) 366-2119

2010 TC Champion &
Reserve Champion Boars “*Home of Cham-*
***pions* “**

- 2011 — Indiana State Fair Grand Champion Boar*
- 2011 — National Type Conference Grand Champion Boar*
- 2010 — National Champion Boar*
- 2010 — Reserve National Champion Boar*
- 2010 — National Champion Gilt*
- 2009 — National Champion Boar*
- 2009 — Littermate put in stud at Prairie State*
- 2008 — National Champion Boar*
- 2008 — Reserve National Champion Boar*
- 2008 — Indiana Swine Circuit Champion Tam Gilt,*
1st place Indiana State Fair
- 2008 — Indiana State Fair Open Champion*
- 2006 — Indiana State Fair Jr. Champion Tam Barrow*
(shown by Wethington family)
- 2005 — National Champion Tam Boar*
- 2002 — Indiana State Fair Jr. Champion Tam Barrow*
(shown by Wethington family)
- Several County Fair Champions and Reserves*



2011 TUNBRIDGE WORLD'S FAIR SWINE SHOW



In September of 2011 the fourth annual swine show took place at the Tunbridge World's Fair in Tunbridge, Vermont. Fifteen exhibitors brought approximately twenty five hogs with two litters of piglets. A third litter made its debut Saturday night, and yes her pen was popular on Sunday! Of the twenty five entries seven were Registered Tamworth. This show is still the only show in Vermont and one of three or four in New England. Our judge this year was Mr. Marshall Brattain from Greencastle Indiana. Again, this year, the junior entries were way up with a young 4H group participating for the first time. Also, for the first time an obstacle course competition was held on Sunday with all participating and a large crowd enjoying the fun. This was likely the highlight of the show for all involved, including Marshall

The Grand Champion for the Junior division was a Berkshire gilt, owned by Fred & Jacci Merriam of Braintree, VT and shown by Michelle Poulin of Brookfield, VT. The showmanship Grand Champion was Daniel Caterino of Weir, New Hampshire. In the Open division the Champion Commercial gilt was a Tamworth cross owned by Matt & Michelle Whalen and family of Chelsea, VT. The Champion Registered gilt was a Berkshire owned by Fred & Jacci Merriam of Braintree, VT and shown by Michelle Poulin of Brookfield, VT. Light Champion Market Hog was won by Matt & Michelle Whalen and family of Chelsea, VT. Heavy Champion Market Hog was won by Fred & Jacci Merriam of Braintree, VT. The Champion Sow and overall Grand Champion of the Open division was a registered Tamworth sow owned and shown by Michael and Diana Whalen of Tunbridge, VT. This same sow was awarded the first annual Champion Tamworth Award. This award, "The Brattain Farm Award," was awarded to Michael and Diana Whalen's sow by none other than Marshall and Shirley Brattain. This award is in recognition to Shirley and Marshall for all the help and assistance they have given us in getting and keeping this show going.

The addition of the 4H show was a significant step this year. Eleven of the fifteen exhibitors were juniors. It was very enjoyable having a bunch of kids around with the same enthusiasm as the adult exhibitors. Once again we drew a substantial crowd. We had a set of bleachers this year that was full with people with some standing around to watch. We still had a devoted following from the Fair's administrative office. Without a doubt the most popular class of the entire fair was the obstacle course that we ran on Sunday. The Open winner was Diana Whalen of Tunbridge, VT. The Junior and overall winner was Mikayla Caterino of Weir, New Hampshire. Since the fair, we have heard many comments about how much fun people had watching the handlers trying to maneuver their pigs through the course. Diana Whalen's entry comes up over and over again. It was a sow with 12 piglets that Diana guided through the different gates. (She had a little help from her husband and a friend) How much fun it was seeing this 2 week old litter follow its mother through the different gates while on their way to victory. This "competition" was definitely a way to relax and have fun on the last day of our Fair. I think Marshall and Shirley would agree.



The Fair and all the exhibitors wish to thank Marshall for coming out and judging our show and for all the advice he had to offer while here. Once again we would like to thank Shirley for coming to Vermont to see the results of her help and advice on a small country fair.

Submitted by: Matt Whalen
Superintendent of Swine
Tunbridge World's Fair



New Heritage Farms

Registered Tamworth Pigs, Toledo, WA
PiGturesque Pasture Pigs and Pork



Vickie Hinkley 360-304-2786 newheritagefarms@yahoo.com

DENNIS FARMS TAMWORTHS



- PASTURE HARDY PIGS RAISED NATURALLY
- NO FEED GRADE ANTI-BIOTICS
- EXCELLENT GRAZERS
- NO FARROWING HUTS OR CRATES
- EXCEPTIONAL MOTHERS

WE ONLY BREED THE BEST

GREG & JANIE DENNIS
RANBURNE, ALABAMA

~

GREG 770.862.7379
greg@dennis-farms.com
JANIE 770.862.2531

For more information please visit us online
www.dennis-farms.com



NOTICE

FEES FOR REGISTRATION (Effective Sept. 1, 2011)

All-in-one litter registration animals up to 90 days (Members)	20.00
All-in-one litter registration animals up to 90 days (Non-Members).....	25.00
All-in-one litter registration animals after 90 days (Members)	35.00
All-in-one litter registration animals after 90 days (Non - Members)	40.00
Each transfer (any sale, except pigs in dam) including all transfers on original application.....	3.00
Duplicate Certificate of Registration	3.00
Changing name of recorded animal	3.00
Transfer forms - (Can download on-line)	25 for 2.00
All-in-one litter registration Form - (Can download on-line).....	20 for 5.00
Life Membership Fee.....	10.00
Transfer of Membership	1.00
Annual Maintenance Fee (due January 1st every year).....	25.00

ANY RUSH WORK NEEDED WITHIN 7 DAYS, FEES WILL BE DOUBLED

Junior membership free to a bona fide 4-H and FFA member up to age 21. Application blanks available from Association Office. Must be signed by Advisor or Leader.

TAMWORTH SWINE ASSOCIATION

Shirley R. Brattain-Secretary • 621 N 850 W • Greencastle, Indiana 46135-7771 • (765) 653-4913
E-Mail: INFO@TamworthSwine.org • Web Site: www.TamworthSwine.org

TAMWORTH INFORMATION:

- The National Tamworth Association is busy promoting our great grazer hogs and they are the best tasting meat for the Farm Markets. They are recognized for their great taste at these markets.
- Tamworths are super hogs for the small scale farmer, as they don't require an expensive set up and can make do with older facilities. They can farrow outside except in extreme cold. Some bedding and a shed will do.
- Tamworths have a really nice temperment and like being around people and the little pigs are lots of fun to watch as they run and play.
- We registered over 200 litters and 1535 pigs this past year—many of whom went to 4-H club members for county shows and state fairs. Tamworths have breeders in several states.
- The National Tamworth Type Conference will be held September 1st & 2nd this year at Greencastle, IN. We have attendees from several states.
- There were approximately 100 head entered in our last National Show & Sale.

If you are thinking of buying some pigs for the family farm, to do Farmer's Markets with good tasting meat—BETTER GIVE TAMS A TRY!

The show this year will be at 12:00 noon on Sunday to give more time between the end of the show and the start of the sale. Entries must be at the fairground by 5 p.m. on Saturday.

If you can't make it by Noon on Sunday, please call David LaFollette and let him help you to make plans. Remember January pigs can be in the Jr. Champion classes if they were so shown at their State Fairs. Motion made that if you are selling a boar in the sale that isn't a Junior Champion, you must bring a gilt to sell also. — You do not have to bring a boar to sell a gilt in the show or sale. Junior members may sell a gilt without selling a boar. Each member may sell 10 pigs—2 boars and 8 gilts. We wanted everyone to know we would like to have you join us for the National Tamworth Type Conference show and sale this year. **REMEMBER—SEPTEMBER 1st & 2nd—Greencastle, Indiana. Banquet at 6:30pm this year.**





Charlie Barnes New Castle, VA (540) 864-5230 ~~ Larry Bright Floyd, VA (540) 745-5790
E-mail: ifarmueat@aol.com E-mail: bright@swva.net

Harnacke Tams

Champion Genetics

Breeding stock and show pigs for sale most of the time.



Our spring litters will be out of "Tom" our pick of boars from 2010 National Show and a boar we purchased from Millars last fall.

Thanks to all who purchased from us.

Congratulations to our kids Cameron & Brooke.

Special thanks to those that purchased our entries at National Show and Glen Swenson for his private purchases.

Quint Harnacke Family

1620 100th Avenue • New Holland, IL 62671

(217) 445-2506



BRATTAIN FARMS TAMWORTHS THE WINNING WAY



This year's Champion could be yours. Try a Tam!

*Best for Farmers Markets • What Great Flavor They Have
Ideal Grazer Pigs • Really Great Mothers • Nice to Work With*

4-H SALE—APRIL 6, 6:30 P.M.

Breeding Stock available most of the time

Marshall & Shirley Brattain

621 N 850 W, Greencastle, Indiana 46135-7771

**MANY THANKS TO OUR BUYERS WHO HAVE SUPPORTED
US THRU THE YEARS AND CONTINUE TO.**



What a year for our Tamworths!
Our genetics had a great show season in
2011!

Grand and Reserve Gilts, WI State Fair

Reserve Grand Boar, WI State Fair

Grand Gilt, IL State Fair

Reserve Grand Gilt, IN State Fair

Grand Gilt, National Tamworth Show

Grand Gilt, Junior National Tamworth Show

Grand Bred Gilt, National Tamworth Show



Grand Champion Gilt at the 2011 National Tamworth Show and Reserve Grand Gilt at IN and WI State Fairs. Special thanks to Tom Rake and Family for their purchase.

Champions Start Here Club Pig and Lamb Sale

Saturday, April 7, 2012

Hog Sale at 6:00 PM EST Viewing at 4:00 PM EST

We will be offering nine different breeds plus crossbreds: Berkshire, Chester White, Duroc, Hampshire, Hereford, Landrace, Spots, Tamworth, Yorkshire, and Crossbreds.

Auctioneer: Bob Moore

Terms: Cash, Check, MasterCard, Visa

Please call for specific breed quantities. All announcements made sale day take precedence over printed material. Not responsible for accidents. Sale located at Doug Millar Farm, 27947 Darden Road, New Carlisle, IN 46552.

Doug Millar
(574) 289-9675
(574) 298-3722
millars4@yahoo.com

Sale Day Phone
(574) 220-6508
(574) 298-3722

Brad and Kelley Bradshaw
(574) 233-3745
(574) 220-6508
goldenacresfarm@yahoo.com



Don't forget the Summer Type Conference, National Junior Show, June 27-30th in Springfield, IL. Help represent the Tamworth breed!

"Crinkle"
Grand Champion Gilt,
Junior Show, at the
National Tamworth
Show and WI State
Fair. Congratulations
Lucas!

We hope 2012 will bring us and our customers as much success as 2011! We have breeding stock available year round.



Heritage breed hogs, like the Tamworth, are purebred animals that have historically been raised by farmers. However, their numbers fell as contemporary hog farmers relied more on mixed breeds to get combinations of desirable traits.



Paul and Marilyn Morrison raise hogs in western Ohio. "Fairs are like beauty contests for pigs — it has a lot to do with looks." —Paul Morrison

the 'bacon pig'



Heritage hogs have earned a mouthwatering reputation

by Marilou Suszko

Most people would rather spend their time eating crispy, smoky strips of bacon than studying the breed it came from, but when a pig has earned the nickname "the bacon pig," it deserves a closer look.

Ohio Farm Bureau members Paul and Marilyn Morrison raise this special "bacon" breed called the Tamworth on their 350-acre Darke County farm as show pigs and breeding stock for pork producers throughout Ohio, New York and as far west as Missouri and Arkansas.

"I've raised just about every breed of meat pig over the past 20 years," Morrison said. "What makes Tamworths special is that they grow slowly so they are leaner with just the right amount of belly fat." That's what you look for in good bacon: lean, finely grained meat balanced with ribbons of fat running throughout.

The Tamworth originated from central England and was imported to America in the early 1800s. Considered a heritage breed, it is the result of centuries of breeding to preserve unique and desirable genetic traits including ones that help it resist disease and tolerate local environmental conditions.

On Morrison's farm, 10 hefty Tamworth sows, between 500 and 600 pounds each, keep company with other heritage breeds like Poland Chinas and Herefords, all valued for quality meat production. Morrison and other small-scale producers regard these breeds as hardy and perfectly suited for outdoor production. Morrison routinely crossbreeds Berkshires — another heritage breed, quite fatty and a historical favorite of Britain's Royal family — with the Tamworth. The result is an animal with superior meat tenderness and palatability.

While Morrison feeds his herd soybeans and corn from his fields, he describes them as excellent foragers. "A hundred years ago, Tamworths lived on wild acorns and berries," he said. Their wiry, ruddy red coats protected them from the sun and helped them adapt to a variety of weather conditions, and strong, sturdy legs helped them walk long distances to forage for their food. Despite these ideal traits, Tamworths began to fall out of favor with some producers. "They didn't do well in confinement and put on weight too slowly," Morrison said.

Morrison points out that the Tamworth is considered a threatened breed, a concern supported by the American Livestock Breeds Conservancy (ALBC), a nonprofit organization whose mission is to protect and conserve rare and historic breeds of livestock and poultry. But the swine with a reputation all wrapped up in bacon is making a comeback. The Tamworth Swine Association reports that approximately 2,500 Tamworths exist through the world with the vast majority found in the United States. Many producers are paying renewed attention to the merits of the breed, which include good mothering skills, their ability to be efficient grazers and high meat to bone ratio.

Consumers have also played an important role in the revival of heritage breeds including the Tamworth as they experience the rich genuine flavor of the meat, especially the bacon, which when cooked is lean, distinct and delicious. But then, it's bacon. What's not to love?

Marilou Suszko is a food writer from Vermilion. She is the author of *Farms and Foods of Ohio: From Garden Gate to Dinner Plate* and hosts *From My Ohio Kitchen to Yours* on the *Our Ohio* TV series.

Reprinted from September-October 2010 Issue of "Our Ohio" Magazine



ALABAMA:

Dennis Farms – Greg and Janie Dennis • 1582 CR 852 • Ranburne, AL 36273
• (770) 862-7379 • greg@dennis-farms.com
Grace Valley Farm • Lynn Thompson • 638 County Road 367 • Trinity, AL 35673
• (256) 476-4177
JK Heritage Farm LLC • Jeff Price • 6545 County Road 59 • Moulton, AL 35650
• (256) 974-3719

ARKANSAS:

Harris, Ted • 81 S. Corinth Road • Ash Flat, AR 72513-9659
Knapp, Duane • 305 Price Ford Road • Heber Springs, AR 72543 • (501) 728-3345

CALIFORNIA:

Wulf, LW, DVM • P.O. Box 8178 • Marysville, CA 95901 • (530) 743-8005

COLORADO:

Pikes Peak Community Foundation • Ventucci Farms • P.O. Box 1443
• Colorado Springs, CO 80901-1443
Riverdale Farm LLC • Paul Greaves • 13200 E. 160th Avenue • Brighton, CO 80601
• paul@plattecrossing.com

CONNECTICUT:

Footsteps Farm • Greg Floyd • 55 Lawrence-Eleanor Street, Stonington, CT 06378
• footstepsfarm@yahoo.com

FLORIDA:

Palmetto Creek Farms • Jim Wood • P.O. Box 607 • Avon Park, FL 33826
• (863) 449-0006 • jim@bestpork.us

GEORGIA:

White, Curtis • 1039 Jimmie Stevens Road • Dublin, GA 31021 • (478) 272-0071

ILLINOIS:

Boucher, Gustin A. • 7268 N 2250 Road • Bourbonnais, IL 60914 • (815) 468-3910
Boucher, Zachary • 7268 N 2250 Road • Bourbonnais, IL 60914 • (815) 468-3910
Devore, James Kurtis • 849 Seagraves Ave • Mulberry Grove, IL 62262
• (618) 326-7381
Harnacke, Cameron • 1620 100th Avenue • New Holland, IL 62671 • (217) 445-2506
Harnacke, Quint • 1620 100th Avenue • New Holland, IL 62671 • (217) 445-2506
• qharnacke@aglandfs.com
LaForge, Christopher • 1766 100th Avenue • New Holland, IL 62671
• (217) 737-1185 (cell)
McClure, Jason • 11367 E 450 N. Rd • Shirley, IL 61772
Menges Brothers • 16262 E. 2750 N. Road • Danville, IL 61834
Moynahan, Thomas • 1046 E 10000 N. Rd • Grant Park, IL 60940
Navis, Ron • 5968 N. East Road • Heyworth, IL 61745 • (309) 473-3456
• redpigz@msn.com
Pine, Donald • 56 Archer Avenue • Marshall, IL 62441-1066 • (217) 826-1111
Prairie State Semen Inc. • 968 Co Road 1000 • N. Champaign, IL • (800) 282-0428
Smith, Robert D. • RR #1, Box 137 • Nebo, IL 62355 • (217) 734-9092
Sugar Creek Ranch • Mark H. Thomaschefskey • 30688 Fulfs Road, Sterling, IL 61081
• (815) 590-0074
Swenson, Glenn • 2953 N 4750 Road • Sandwich, IL 60548 • (815) 786-2786
• gswen@webtv.net
Worthington, Mike • 2028 E 600 N Road • Pana, IL 62557

INDIANA:

Baker's Tamworth • Ed & Becky Baker • 4825 N Regna Place
• West Terre Haute, IN • 47885 • (812) 535-3643 • ebaker@ampacet.com
Brattain Farms • M & S Brattain • 621 N 850 W • Greencastle, IN 46135
• (765) 653-4913 • brattainfarms@webtv.net
Bright, Michael Scott • 4651 W SR 124 • Wabash, IN 46992
Burnett, Chris • 9149 W 300 N • Tipton, IN 46072
Cook, Charles • 10893 E 450 N • Charlottesville, IN 46117
Cook, David & Jill • 5569 S SR 109 • Knightstown, IN 46145
Countryside Stock Farm • Clinton Weiss • 7297 East Base Road
• Union City, IN 47390-8318 • (765) 964-7261 • clintweiss@yahoo.com
Dawson, Don • 3621 N 1175 W • Kempton, IN 46209-9322 • (765) 947-5255
Francis, Phil • 497 E 300 S • Crawfordsville, IN 47933 • (765) 362-0139
Golden Acres Farm – Doug Millar Family • 27947 Darden Rd • New Carlisle, IN
46552 • (574) 220-6508 • goldenacresfarm@yahoo.com
Gulick, Jeff & Family • 816 Bur Oak Court • East Lafayette, IN 47909
Ireland, Steve & Sandra • 653 W SR 43 • Veedersburg, IN 47987
Kochert, Frank • 4640 S 900 E • Lafayette, IN 47905
Koopman, Garrit & Family • 8297 N Old SR 55 • Wingate, IN 47994
• (765) 275-2296 • koop1981@hotmail.com
LaFollette, Dave • 9680 E 550 N, Darlington, IN 47940 • (765) 794-0203
• lafollette1958@hughes.net
Lambring, Max • 4498 E CR 100 S, Seymour, IN 47274
Lanes End Farm • Cory Lodge & Family • 3399 W 300 S • Peru, IN 46979 • (765) 473-5367
Mac's Tams • Dave McClaskey • 8822 E US 136 • New Ross, IN 47968
• (765) 723-1326 • Cell (765) 366-2119

McDermitt Genetics • George McDermitt • 4726 S CR 300 W, Greencastle, IN 46135
• (765) 653-4342 • mcdermittgenetics@comcast.net
McMullen, Larry • 4699 E 750 S • Ladoga, IN 47954-7202 • (765) 942-2059
• Cell (765) 376-9986
McNabney, Brian • P.O. Box 96 • Laketon, IN 46943 • (260) 982-2509
Mel-O-Roc Swine Farm • Terry Melloncamp • 5633 S SR 39 • Brownstown, IN 47220
Moore, Dale & Family • 4557 W SR 246 • Farmersburg, IN 47859 • (812) 898-2042
Peters, Dave • 497 E 300 S • Crawfordsville, IN 47933
Shaffer, Kim & Carolyn • 3699 W Lincoln Way • Columbia City, IN 46725-9128
• kcse@kconline.com
Smith Farms • Larry Smith • 3277 S. 500 W., New Castle, IN 47362
Thistledown Farm • James Smith • 7193 CR 59 • Spencerville, IN 46788-9429
• (260) 238-4126 • smithjwx1@hotmail.com
TK Farm • Ronald McCormick • 7357 N Kitchen Road • Mooresville, IN 46158
• (317) 831-5630
Twin Cedars • Bob Brown • 8418 S. 300 W. • Clayton, IN 46118

IOWA:

Albertson, Frank • 2689 Il Avenue • Toledo, IA 5342-9547
Jensen, Kyle A. • Fennel Creek Farm • 2200 185th Street, P.O. Box 61
• Corydon, IA 50060 • (641) 874-5973
Lewis, Stephen • 1305 Virginia Street • Columbia, IA 50057
• vanderlewis@hotmail.com
Schmitz, Lindsay • 1151 State Highway 150 • Fort Atkinson, IA 52144
• jlschmitz@fbx.com
Werling, Ed • 2602 Parrish Ave • Independence, IA 50644
Westercamp, John C. • 30169 Highway 2 • Bonaparte, IA 52620-8138
• (319) 878-4146

KANSAS:

Sedgwick County Zoo • 5555 Zoo Boulevard • Wichita, KS 67212-1698
• (316) 266-8219

KENTUCKY:

Bush, Ken • 3076 Waterworks Road • Winchester, KY 40391-8057 • (859) 744-0198
Contini, John & Clay • 4344 Poor Ridge Pike • Lancaster, KY 40444
• (859) 339-0747 • jdmctini@peoplepc.com
Cornish, Ray • 1395 Shakertown Road • Harrodsburg, KY 40330 • (859) 583-8757
Leaning Pine Farms • John Bruner • 473 Edward Meece Road
• Science Hill, KY 44253 • (606) 271-0582
Philpot, Randy • Philpot Family Farm • 4317 Marydell Road • London, KY 40741
• (606) 877-7761 • bfv458@hotmail.com

MAINE:

Coastal Critter • George Morton • 122 Corea Road • Prospect Harbor, ME 04669
Mandala Farm • Sara Faulk • 46 Youngs Farm Road • Gouldsboro, ME 04607
• (207) 963-2984
Ole Sow Farm – Jessika Zaroni • 1050 County Road • Lubec, ME 04652
• (207) 733-2569
Wild Asparagus Farm • Box 169 Whitefield, ME 04353 • (207) 582-9058

MARYLAND:

Whitmore Farm • William Morrow • 10720 Dern Raod • Emmitsburg, MD 21727
• (301) 447-3611

MASSACHUSETTS:

Winnimuset Farm • Sharon Hamel & Sean Munzer • 580 Wine Road, New
Braintree, MA 01531 • (413) 477-6294 • winnimusetfarm@localnet.com
Buttonwood Park Zoo • 425 Hawthorn Street • New Bedford, MA 02740 • bpzoo.org
Codman Community Farms Inc. • 58 Codman Road • Lincoln, MA 10773-3714
• harryfeed@vei.net
Plimoth Plantation • 137 Warren Avenue, P.O. Box 1620, Plymouth, MA 02362-1620
• (508) 746-1622

MICHIGAN:

Carson, Fred • 351 N Brucker Avenue • Hesperia, MI 49421
Heritage Acres Tamworths • Stephen Hicks • 31055 Portage Road • Niles, MI 49120
• (269) 687-2698
Monarch Farms • Melvin Meiske • 2916 Townline Road • Midland, MI 48642-9211
• (989) 835-8309
Nebel Farm • Tom Nebel • 6038 27.15 Lane • Gladstone, MI 49837 • (906) 428-9619
Old Homestead Family Farm • Brien Herbert • 35684 64th Avenue
• Paw Paw, MI 49079 • (269) 330-6547 • oldhomesteadfarm@hotmail.com
Schaller, Jamie • 11112 Carpenter Road • Davison, MI 48423
• Jps35@daimlerchrysler.com
Workman, Paul • 7346 W 12 1/2 Mile Road • Mesick, MI 49668

MINNESOTA:

Hilltop Pastures Family Farm • Thomas Austin • RR 1, Box 16703
• Fountain, MN 55935

Continued Next Page...



MISSOURI:

4-K Land & Cattle Company • Bob Rankin Family • 800 Rolling Wood • Columbia, MO 65202
Antelope Creek Farms • Daniel E. Indgjer • P.O. Box 45 • Drexel, MO 65742 • (316) 657-2196 • e.dindgjer@hotmail.com
Black, Jon • 9083 Liv 529 • Chillicothe, MO 64601
Croy Tamworths • Dennis, Erin, Klye Croy • 24166 Slade Avenue • Gallatin, MO 64640 • (660) 663-2463 • dcroy13@hotmail.com
Deutschman, Lee • 23635 State Highway HH • Gallatin, MO 64640
Gooding's Golden Acres • Dave & Betty Gooding • 31785 278th Street • Gallatin, MO 64640 • bettylg@greenhills.net
Johnson, Tim & Ashley • 5924 SW State Road D • Polo, MO 64671
Littlefield Livestock • John C. Littlefield • 4157 Nighthawk Road • Diamone, MO 64840 • (417) 325-4274 • littlefields@cn6.k12.mo.us
Orbon, Robert C. • 1459 Trent Road • Washburn, MO 65772 • (417) 435-2538
Rains Tams • David Rains & Family • 23500 278th Street • Gallatin, MO • (fax) (660) 663-4135
Ray Tamworths • Stan Ray • 402 Benton • Gallatin, MO 64640 • skdrray@hotmail.com
Street Farms • Bob & Carol Street • 199 Colbert Lane • P.O. Box 36 • Whiteside, MO 64487
Wright, Megan • 32793 Highway 0 • Keytesville, MO 65261
Wyble, Greg • 23598 Pike 301 • Bowling Green, MO 63334

NEBRASKA:

Diamond E Ranch Inc • Nile Greathouse • 3613 Road 47 • Harrisburg, NE 69345-9524 • (308) 436-2377
Double L Farm • Lance, Linda & Ruth Ann Heitman • PO Box 52 • 101 Elsie Avenue • Elsie, NE 69134 • (308) 228-2632 • lindaheitman@yahoo.com

NEW MEXICO:

Marr, John • 451 W Meadowlark Lane • Corrales, NM 87048 • (505) 288-8526

NEW HAMPSHIRE:

Aikman, Marian Robin • 118 Sligo Road • Rollingsford, NH 03869-5810
Jones, Mary • 161 Post Road ZZ • North Hampton, NH 03862 • (603) 964-2925
The Inn at East Hill Farm • Dave Adams • 460 Monadnock Street • Tory, NH 03465 • info@east-hill-farm.com

NEW YORK:

Adams, Frederick W. • 7 Voorhess Avenue, Camden, NY 13316 • (218) 639-1839
Becker, Thomas • P. O. Box 57 • sloansville, NY 12160
Dharma Lea LLC • Paul & Phyllis Van Amburgh • 105 Durope Road • Sprakers, NY 12166 • (518) 673-2460
Hess, Frank & Carol • 17 Dow Road • Moira, NY 12957 • (518) 529-0537
Hicks, Brian • 4052 City Road 10 • Depeyster, NY13633
Hidden Hollows • Ian G. Witherington • 12770 Guernsey Hollow Road • Frewsburg, NY 14738 • (716) 569-6783
High Meadows Farm • Lauara B. Hussey • Webster Brook Road, Box 98 • Delhi, NY 13753 • (607) 746-7845 • vanclan@delhiel.net
Kingbird Farm • Michael • Karma Glos • 9398 West Creek Road • Berkshire, NY 13736 • (607) 657-2860
Lord, Michael & Shaun Ann • 1468 Route 39 • Forrestville, NY 14062 • (716) 965-2502 • caseman@netsync.net
Scott Family Farm • John Scott Family • 193 Jersey Lane • Cobleskill, NY 12043
T-Meadows • Rich Tilyou • 3732 Ewings Road • Lockport, NY 14094 • Rr72020@peoplepc.com
Twin Ponds Farm • Bill Bredderman • 156 Sprakers Road • Sloansville, NY 12160 • bbrdderman@gmail.com
Uphill Farm LLC • Helena Kagan • Salt Point Turnpike • P.O. Box 53 • Clinton Corners, NY 12514 • (845) 266-5005

NORTH CAROLINA:

D & E Swine Farm • Clarence Durham • 470 Andrews Store Road • Pittsboro, NC 27312 • (919) 933-2969
Grateful Growers Farm • 3006 Mack Ballard Rd • Denver, NC 28037 • (828) 234-5182 • info@99farm.com
Wooten, Julian • 1106 Gould Road • Jacksonville, NC 28540 • (910) 346-6885

OHIO:

Arrowhead Farm • Wm. Horse SR. and Jr. • 6491 Miller's Chapel Road • Hillsboro, OH 45133
Blair's Farm • Tim Blair • 2997 Harrison Road • HOLLANSBURG, OH 45332
Emerald Farm • Tom & Connie Fenton • 200 Centenary Road • Winchester, OH 45697 • (937) 695-0014 • (937) 217-0287 (cell)
Fenton Brothers • 22050 State Road 136 • Winchester, OH 45697 • (937) 695-0014
Grover, Chas • 2906 Parrott Station Road • Washington C.H., OH 43160 • (740) 426-6215
Helberg, Marcia • 5130 Orangeville-Kinsman • Burghill, OH 44404 • (330) 240-8438
Hendricks Preferred Stock • Ric Hendricks • 08838 St. Rd. 34 • Bryan, Union, OH 43506 • (419) 636-1694
Jones, Mike • 2264 Alliance Road • Deerfield, OH • (330) 597-6144 • g.mike-jones@neoirr.com
Maple Grove Farms • Phil Grover • 2906 Parrott Station Road • Washington C.H. OH 45150 • (740) 426-6215 • grover.1@osu.edu

Morrison, Paul & Family • 2802 Weaver Station Road • New Madison, OH 45346 • (937) 996-5491 • Cell (937) 459-0389 • paulnwmdsn@aol.com
Spring Hill Farm • David T. Fogle • 5757 Spring Hill Road • Newark, OH 43056 • (740) 404-5897 • dfogle@realisticfinancial.com
Steel Farm • Marsha Steel • 26 Main Street • Germantown, OH 45327 • (937) 855-2376 • hoja948@yahoo.com
Threewits, Keith • 10933 Hillgrove-Ft. Recovery • Union City, OH 45390

PENNSYLVANIA:

Dancing Heart Farm • Marcus Briggs • 233 Priest Hollow Road • Russell, PA 16345 • (814) 757-8119 • mncbriggs@kinzua.net
Reed, James • 122 Coal Hill Lane • Slippery Rock, PA 16057
Smith, David A. & Joanna • 873 Dutch Hollow Road • Jersey Shore, PA 17740 • (570) 769-7344 • e-mailsmith5@lhup.edu

SOUTH CAROLINA:

Broken Wing Farm • Bill Welch • 331 Penson Road • Honea Path, SC 29654 • (864) 275-8801
Gold Leaf Farm • Claudia Donnelley • 210 B&L Lane • Gaston, SC 29053 • (803) 755-8184 • jasonclaudia@bellsouth.net
Mac's Farm Supply • 7051 Cottageville Highway • Round O., SC 29474
Zarkovacki, John • 28 North Point Royal Drive • Hilton Head, SC 29928 • (843) 342-5651 • jzarkovacki@fairfieldcompanies.com

TENNESSEE:

Caryonah Hunting Lodge • Patrick Garrison • 220 Wild Boar Lane • Crossville, TN 37337 • (931) 277-3113 • caryonah@frontier.net
Diamond D Tams • Darrin & Jenny Drake • 69 Cowan Valley Lane • Hickman, TN 38567 • (615) 683-5556 • naturalmeat@aol.com
Kemmer, Mitch • 4239 Dogwood Road • Grandview, TN 37337 • (931) 456-4643
Three Meadows • Roy & Treina Blair • 2487 Fred White Road • Columbia, TN 38401 • (931) 380-1146

TEXAS:

Brewer, Mary Ann • 1449 County Road 2297 • Cleveland, TX 77327 • (281) 592-3252
Cobb, Manning • 266 CR 34520 • Sumner, TX 75486 • (903) 784-5751

VERMONT:

Green Mountain Heritage Farm • Matt & Michelle Whalen Family • 3354 Pepper Road • Chelsea VT 05038 • (802) 431-3478 • vtheritagefarm@yahoo.com
Hogwash Farm • 708 Four Goodrich Corners • Norwich, VT 05055 • (802) 649-8807
Morgan, Jay • Box 348 • Concord, VT 05824
Vermont Heritage Grazers, LLC • Alethea Bahnc • 2175 East Street • Bridport, VT 05734-0116 • (802) 758-5040 • alethea@gmavt.net
Whalen, Michael & Diana • 2 Whalen Road • Randolph Center, VT 05061 • (802) 728-5337

VIRGINIA:

Bright, Larry • 794 Spangler Mill Road • Floyd, VA 24091 • (540) 745-5790
Copper Hill Farm • William K. Munzing • P.O. Box 167 • Copper Hill, VA 24079 • (540) 929-4455
Mountain Meadows Farm • Charles Lynn Barnes • 771 Barbour's Creek Road • New Castle, VA 24127-9947 • (540) 864-5230 • ifarmueat@aol.com

WASHINGTON:

Covey, Mike • 3817 NW 180th Street • Ridgefield, WA 98642 • (360) 887-3262 • cascadia@mac.com
Gustavsen & Co. LLC • April Jones • 4739 NW 199th Street • Ridgefield, WA 98642 • (360) 635-4334
New Heritage Farms • John & Vickie Hinkley • 834 Spencer Road • Toledo, WA 98591-9209 • (360) 864-8515 • jvhinkley@toledotel.com

WEST VIRGINIA:

Payne, Claude G. • 3504 Warm Springs Road • Shenandoah Jct. WV 25442 • (304) 676-9879
White Oak Ridge Farm • Roy, Louis and Megan • R.R. Box 85011 • Phillipi, WV 26416 • (304) 457-2953

WISCONSIN:

Bolder, Chuck • W 1046 Vasaheau Road • Gleason, WI 54435 • (715) 873-4091
Clapper, Bob • 722 Center Street • Lake Geneva, WI 53147 • (262) 248-0103 • c.clapper@sldservices.com
Cricket Dawn Farm • Mark Kraklow • N 10658 Med Lake Road • Iola, WI 34945
Dominion Valley Farm • Brandon Dykema • 8375 Midland Drive • Allenton, WI 53002 • (262) 269-9423
Dougherty, Bob & Charlotte • P.O. Box 153 • Darlington, WI 53530-0153
Gill, Bryant & Brandon • 29770 State Highway 81E • Platteville, WI 53818
Rake, Tom • 6840 Schumacher Road • Waunakee, WI 53597-9715 98284 • (608) 849-7458
Robinson, Nila • 4807 Kettner Road • Shiocton, WI 54170 • (920) 540-3900 • nila@nilarobinson.com
Robinson, Rick • W 2636 St. Charles Road • Clinton, WI 53014 • (715) 305-4897 (cell) • lighthousehomeinspection@tds.net
Smith, Cody, Kelly & Raychel • N 7639 French Road • Johnson Creek, WI 53038 • (920) 988-4984
Speth, Martin • W 8178 Creek Road • Delavan, WI 53115 • (262) 882-4779



Nila Robinson, Prop.

Whistleberry Farm

Pasture Raised Tamworths



**Selected for quality, true Tamworth type,
good temperament and mothering ability**

My herd has been tested for PSSF, and I will guarantee the breeding stock you purchase to be negative for the porcine stress susceptibility factor. Certification will accompany papers.

Email: freerange@whistleberryfarm.com

Website: www.whistleberryfarm.com

N4807 Kettner Road
Shiocton, WI 54170
(920) 540-3900

Breeding stock usually available

SWENSON FARMS TAMWORTHS

Sound Pasture-raised breeding stock available at most times.

Registered Tamworths

We have some very nice litters out of C.G. Rosco 1-5. This boar won a very tough class of January boars at Type Conference last September.

C.G. Rosco 1-5 was sired by EFB06 3-2 who had sired many great pigs through his time.

Glenn Swenson
2935 N 4750 Road
Sandwich, IL 60548
Phone: (815) 786-2786

*Local Pastured Meat
Tamworth Pigs
Belted Galloway Cattle*



**Pasture Raised Registered Breeding Stock
& Feeder Pigs available Year Round**

Nancy LaRowe • Dave Yesman
97 Kerwin Hill • Norwich, VT 05055
802/649-8807 • info@hogwashfarm.com

LEANING PINE FARMS LLC REGISTERED TAMWORTHS

Show pigs, Breeding stock, and Feeder Pigs

**The South's
source for
Quality
Tams!**

Dr. John Bruner & Family

473 Edward Meece Rd
Science Hill, KY 42553
606-271-0582

jnosbruner@msn.com

**Good Selection of January & February
Show pigs available**

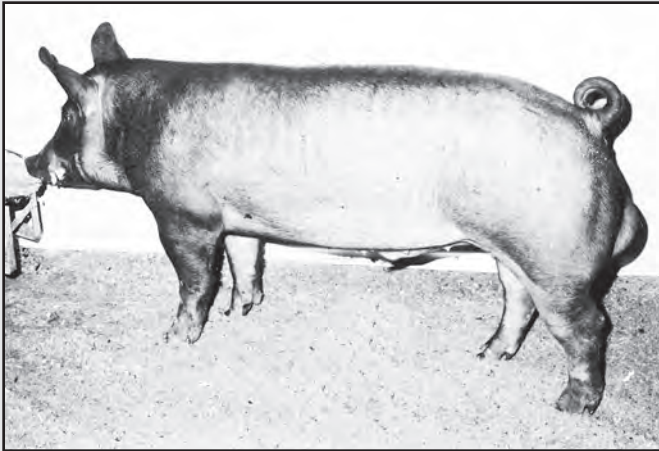
Pigs sold to satisfied customers in: TX, PA, SC, NC, KY, TN, AL, WA, GA, IN,
WV, OH, WI, FL, MI, IL, VA.



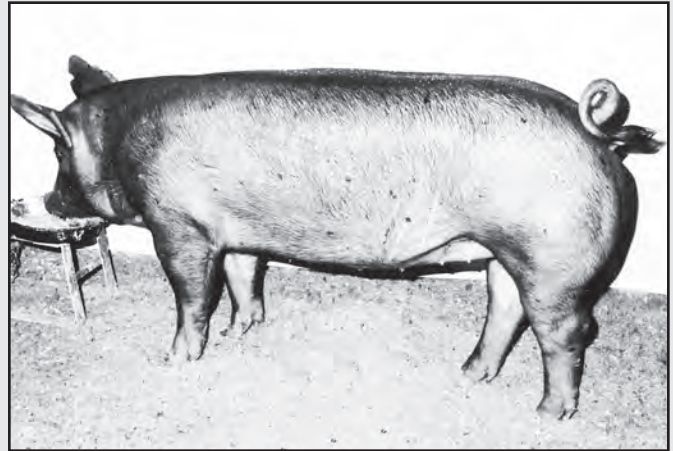
Emerald Farms

REGISTERED TAMWORTHS

We strive for genetics that produce large uniform litters.



*EF 11D 1-1 Reserve Champion OH State Fair 2011
Purchased by Ken Bush, Winchester, KY*



*EF 11s Rain 15-7 1st Mar. & Res. Jr. IN State Fair 2011
Purchased by Nila Robinson, Shiocton, WI*

FYI: At the 2009 National Show & Sale we consigned EF Andi 1-6, an outstanding Dec. gilt. Her littermate was Reserve Champion Gilt at the '09 Indiana State Fair and 1-6 was purchased by McMullen & McClaskey (Mac's Tams) in Indiana. To date, this sow has produced: 2010 National Show & Sale Champion Boar, Reserve Champion Boar, Champion Gilt plus two litter-mate gilts that were near the top of the Sale Champion Boar, and another littermate boar standing AI for Howe and Millar, Indiana. We are very proud to have bred this great brood sow.

**Thanks To All The Buyers Who Have Purchased From Us
And Shown Confidence In Our Breeding Program.**

For other livestock needs please contact us about Registered Ayrshire Cattle, Boer Goats, Club Calves.

fentonshowcattle.com • emeraldcrossingboergoats.homestead.com

*Fenton Brothers
22050 St. Rt. 136
Winchester, Ohio
(937) 695-0697*

*Tom & Connie Fenton
200 Centenary Rd.
Winchester, Ohio
(937) 695-0114
email: fentontcrl@localnet.com*

Youth of Today



JUNIOR MEMBERSHIP APPLICATION

I hereby make application for Junior Membership in the Tamworth Swine Association. I agree to abide by the Constitution and By-Laws of the Association.

Signature of Applicant _____

Address _____

Date of Birth _____

The above applicant is a member of the

Name of 4-H or FFA Chapter _____

Date _____

Signature of FFA Advisor, 4-H Club Leader County Ext. Agent or 4-H Ext Agent _____

CUT ALONG DOTTED LINE

SENIOR MEMBERSHIP APPLICATION

Tamworth Swine Association
621 N 850 W

Greencastle, IN 46135-7771

Gentlemen:

I hereby make application for membership in the Association. I agree to abide by the Constitution and By-Laws of the Association. Enclosed is \$10.00 for membership fee.

Signature or Firm Name _____

Address _____

Date _____ Phone No. _____

E-mail Address _____



APPLICATION FOR REGISTRATION TAMWORTH SWINE ASSOCIATION

621 N 850 W
Greencastle, IN 43135-7769

LITTER
NUMBER

PLEASE
PRINT
PLAINLY

RE
IMPORTANT
Show Litter Notch
Litter Notch Must
Be in Right Ear

ALL PIGS MUST BE EAR NOTCHED WITH THE UNIVERSAL SYSTEM.

Date Born _____ No. Pigs Born _____ No. Raised: Boars _____ Sows _____

Registered within 90 days of birth Members \$20 Non members \$25
Registered after 90 days of birth Members \$35 Non members \$40

Owner _____ (Owner of sow at the time litter was farrowed) Address _____ Town _____ State _____

Breeder _____ (Owner of sow when she was bred.) Address _____ Town _____ State _____

Pedigree of Litter

Must be completely filled out

SIRE _____ Reg. No. _____

Sire of Sire _____ Reg. No. _____

Dam of Sire _____ Reg. No. _____

DAM _____ Reg. No. _____

Sire of Dam _____ Reg. No. _____

Dam of Dam _____ Reg. No. _____

SERVICE CERTIFICATE FOR BRED SOW ONLY

Sow No. _____ Date of Service _____ Service Boar No. _____

Owned by _____

(Signed by Owner of Service Boar at Time of Mating.)

Individual Pigs in Litter

Please Read Instructions. All eligible pigs MUST be recorded at the same time.
Indicate if BOAR or BARROW (Limit Name to 30-Characters) GILTS
Herd Mark - Year Name Ear Notch Herd Mark - Year Name Ear Notch

BOAR BARROW

Name _____ Sale Date _____

Buyer _____ City, State _____

BOAR BARROW

Name _____ Sale Date _____

Buyer _____ City, State _____

BOAR BARROW

Name _____ Sale Date _____

Buyer _____ City, State _____

BOAR BARROW

Name _____ Sale Date _____

Buyer _____ City, State _____

BOAR BARROW

Name _____ Sale Date _____

Buyer _____ City, State _____

BOAR BARROW

Name _____ Sale Date _____

Buyer _____ City, State _____

BOAR BARROW

Name _____ Sale Date _____

Buyer _____ City, State _____

I certify the above Tamworth pigs are eligible to register according to the rules of registry

Signature _____

It's your word. It's a bond that says your breeding stock is a superior product backed by superior genetics and predictable performance.

A performance pedigree is what sets the purebred man apart from the people who pass common, ordinary pigs off as breeding stock.

And a pedigree is something else. it's the life blood of an entire industry, making it possible for you to have the leadership, research, programs, services and support you've come to expect from your association.

So, if you're raising and selling purebreds, you owe it to yourself to register every litter. If you are purchasing seedstock for your commercial operation, you owe it to yourself to ask for the performance pedigree. Why not take advantage of years of genetic selection and performance to see that your breed is a very important part of sustaining that special heritage breed you are purchasing.

Genetics are a very important part of the animal you are starting to build your herd with and that piece of paper, called a pedigree, is very relevant to the growth, lineage and productivity of your future.

Remember to give the person you purchase your pig from your name and address and how you want them registered. They will have to send in a transfer to the association and have it put in your name, so that when you have a litter of pigs, you can register them and be proud of what you own. Small but very important and necessary things to do.

Be sure to get that paper for your pig!



TAMWORTH SWINE ASSOCIATION

Owner Transfer Application

EN _____ SEX _____ REG# _____ NAME _____

SALE DATE: _____

BUYER NAME: _____

ADDRESS: _____

CITY: _____ STATE: _____ ZIP: _____

OWNER'S SIGNATURE: _____

TAMWORTH ORIGIN AND HISTORY

The Tamworth originated in Ireland where they were known as "Irish Grazers", being given that name due to the fact that they were such wonderful foragers. About 1812 Sir Robert Peel, being impressed with the characteristic of these hogs imported some of them to his estate at Tamworth, England. It is from this place they derived their name. An English authority, who calls it the "Mahogany" or "Grizzly" pig, says it was extensively bred in several of the midland counties of England early in the nineteenth century. When the droves were mainly kept in the woods and forests. They are not a composite breed, and are thought by many to be one of the oldest and purest breeds in Britain.

THE TAMWORTH BEFORE IMPROVEMENT

They were long of limb, long in the snout and flat in the rib. They were active, hardy, good rustlers, and very prolific, but they were slow feeders and late in maturing.

THE IMPROVEMENT OF TAMWORTHS

This has been almost entirely effected through selection, judicious breeding, and management. It is now pretty generally conceded that the blood of other breeds has not been used to any extent in the improvement of Tamworths. Tamworths have been used in developing other breeds in the United States.

WHEN IMPROVEMENT WAS EFFECTED

They appear to have been improved to a considerable extent before the middle of the 19th Century, as they were given First Honors at the Royal Agricultural Society's Show when competing with large breeds as early as 1847. But subsequent to this period they sank into obscurity, and were only known in some local districts. About 1877 a demand grew up for more hogs of the bacon type, and breeders of Tamworths brought their favorites to the front in England.

THE FIRST TAMWORTHS IN THE UNITED STATES

The first Tamworths in the United States were those imported by Thomas Bennett of Rossville, Illinois in 1882. In the following decade, Tamworths were also imported into Canada and the breed gradually became known in both countries. The Tamworth has two characteristics for which it was entitled to preeminence; i.e.; an unusual proportion of lean meat, and large litters of pigs; also that Tamworths will make as many pounds of gain, largely lean meat, from a given weight of feed as will hogs of any other breed. From these early imports, the Colorado agricultural College's three year farm average for all sows was ten live pigs to a litter. A two-year old sow weighing 750 pounds had 18 live pigs at one farrowing, and a Tamworth at the Iowa Agricultural College raised 33 pigs in one year.

ORGANIZATION

Tamworth Swine are protected by registration in Great Britain, the United States and Canada. The American Tamworth Swine Record Association was organized in 1897.

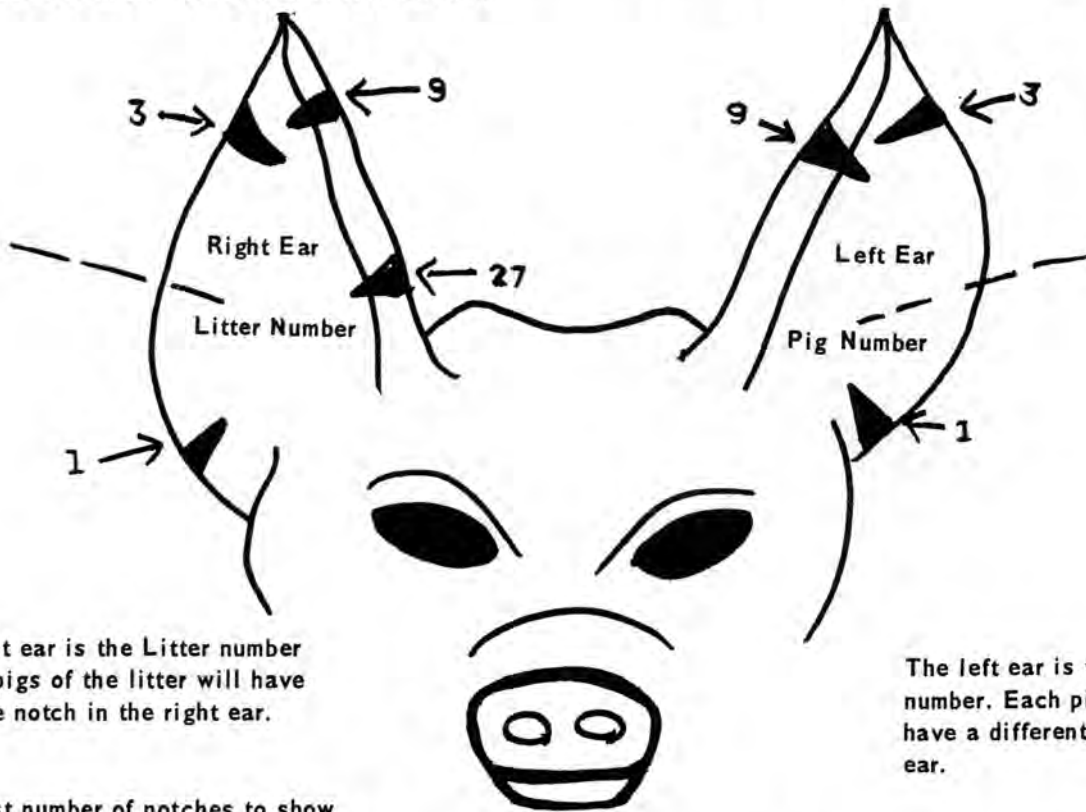
SWINE GESTATION TABLE																																	
115 DAYS																																	
Bred Jan.	1	2	3	4	5	6	7	8	9	10	11	12	13	14	15	16	17	18	19	20	21	22	23	24	25	26	27	28	29	30	31	-	Jan.
Farrow Apr.	26	27	28	29	30	1	2	3	4	5	6	7	8	9	10	11	12	13	14	15	16	17	18	19	20	21	22	23	24	25	26	-	May.
Bred Feb.	1	2	3	4	5	6	7	8	9	10	11	12	13	14	15	16	17	18	19	20	21	22	23	24	25	26	27	28	-	-	-	-	Feb.
Farrow May	27	28	29	30	31	1	2	3	4	5	6	7	8	9	10	11	12	13	14	15	16	17	18	19	20	21	22	23	-	-	-	Jun.	
Bred Mar.	1	2	3	4	5	6	7	8	9	10	11	12	13	14	15	16	17	18	19	20	21	22	23	24	25	26	27	28	29	30	31	-	Mar.
Farrow Jun.	24	25	26	27	28	29	30	1	2	3	4	5	6	7	8	9	10	11	12	13	14	15	16	17	18	19	20	21	22	23	24	-	Jul.
Bred Apr.	1	2	3	4	5	6	7	8	9	10	11	12	13	14	15	16	17	18	19	20	21	22	23	24	25	26	27	28	29	30	-	-	Apr.
Farrow Jul.	25	26	27	28	29	30	31	1	2	3	4	5	6	7	8	9	10	11	12	13	14	15	16	17	18	19	20	21	22	23	-	Aug.	
Bred May.	1	2	3	4	5	6	7	8	9	10	11	12	13	14	15	16	17	18	19	20	21	22	23	24	25	26	27	28	29	30	31	-	May.
Farrow Aug.	24	25	26	27	28	29	30	31	1	2	3	4	5	6	7	8	9	10	11	12	13	14	15	16	17	18	19	20	21	22	23	-	Sep.
Bred Jun.	1	2	3	4	5	6	7	8	9	10	11	12	13	14	15	16	17	18	19	20	21	22	23	24	25	26	27	28	29	30	-	-	Jun.
Farrow Sep.	24	25	26	27	28	29	30	1	2	3	4	5	6	7	8	9	10	11	12	13	14	15	16	17	18	19	20	21	22	23	-	Oct.	
Bred Jul.	1	2	3	4	5	6	7	8	9	10	11	12	13	14	15	16	17	18	19	20	21	22	23	24	25	26	27	28	29	30	31	-	Jul.
Farrow Oct.	24	25	26	27	28	29	30	31	1	2	3	4	5	6	7	8	9	10	11	12	13	14	15	16	17	18	19	20	21	22	23	-	Nov.
Bred Aug.	1	2	3	4	5	6	7	8	9	10	11	12	13	14	15	16	17	18	19	20	21	22	23	24	25	26	27	28	29	30	31	-	Aug.
Farrow Nov.	24	25	26	27	28	29	30	1	2	3	4	5	6	7	8	9	10	11	12	13	14	15	16	17	18	19	20	21	22	23	24	-	Dec.
Bred Sep.	1	2	3	4	5	6	7	8	9	10	11	12	13	14	15	16	17	18	19	20	21	22	23	24	25	26	27	28	29	30	-	-	Sep.
Farrow Dec.	25	26	27	28	29	30	31	1	2	3	4	5	6	7	8	9	10	11	12	13	14	15	16	17	18	19	20	21	22	23	-	Jan.	
Bred Oct.	1	2	3	4	5	6	7	8	9	10	11	12	13	14	15	16	17	18	19	20	21	22	23	24	25	26	27	28	29	30	31	-	Oct.
Farrow Jan.	24	25	26	27	28	29	30	31	1	2	3	4	5	6	7	8	9	10	11	12	13	14	15	16	17	18	19	20	21	22	23	-	Feb.
Bred Nov.	1	2	3	4	5	6	7	8	9	10	11	12	13	14	15	16	17	18	19	20	21	22	23	24	25	26	27	28	29	30	-	-	Nov.
Farrow Feb.	24	25	26	27	28	1	2	3	4	5	6	7	8	9	10	11	12	13	14	15	16	17	18	19	20	21	22	23	24	25	-	Mar.	
Bred Dec.	1	2	3	4	5	6	7	8	9	10	11	12	13	14	15	16	17	18	19	20	21	22	23	24	25	26	27	28	29	30	31	-	Dec.
Farrow Mar.	26	27	28	29	30	31	1	2	3	4	5	6	7	8	9	10	11	12	13	14	15	16	17	18	19	20	21	22	23	24	25	-	Apr.

TAMWORTH EAR NOTCHING SYSTEM

Guide for showing location and value of ear notches for marking litters and individual pigs. Breeders may change over to this system in 1966.

THIS IS THE ONLY SYSTEM WHICH WILL BE PERMITTED AFTER JANUARY 1, 1967

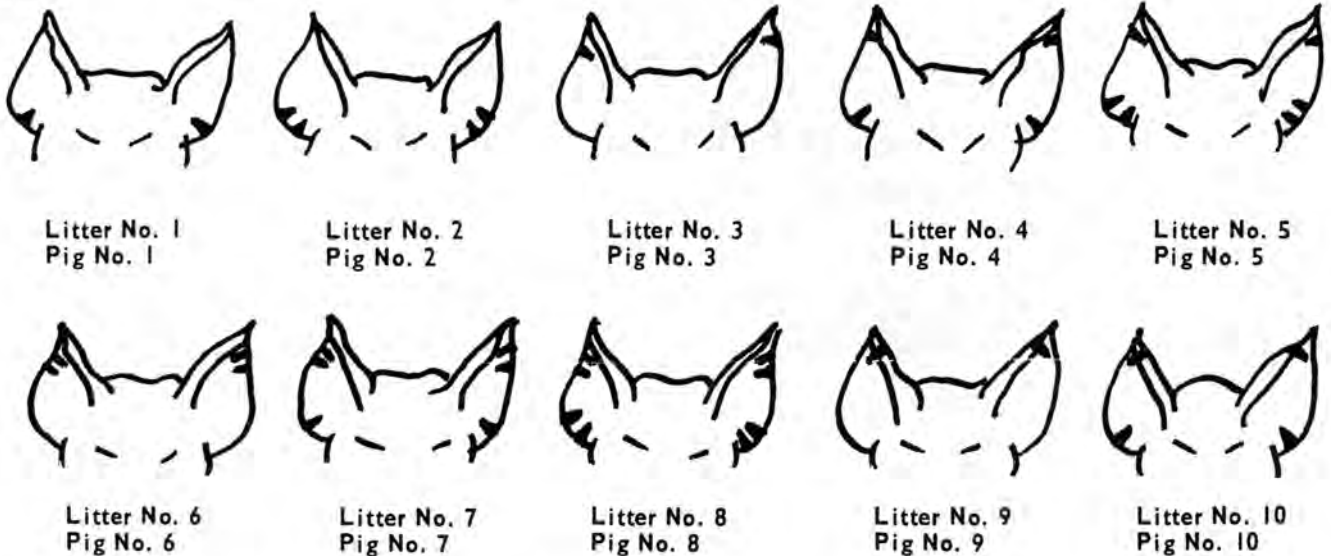
Number litters consecutively for one calendar year. Start over with Number 1 at the beginning of each year. The Association may refuse to register or certify for showing any animal not properly ear marked. All pedigrees sent in for recording must be made out on the blanks of this Association.



The right ear is the Litter number and all pigs of the litter will have the same notch in the right ear.

The left ear is the pig's specific number. Each pig in a litter will have a different notch in the left ear.

Use least number of notches to show number.



To avoid confusion when showing the ear notches on a Litter Report Card, or Pedigree Application Card, indicate notches by a single straight line thusly:



This would be Litter No. 13 Pig No. 16



Registered Tamworth

Raised on Certified
Organic Feed

EARTH ONE LLC
Roseburg

Oregon

earth1@wildblue.net
(541)784-9024
web.me.com/earth.one

The above photo was the first place winner in a contest held by the ALBC Conservancy in 2009.

McDERMIT GENETICS

- **Tamworth* 4-H Pigs (January & February)**
- **Tamworth* Breeding Stock**
- **Tamworth* Feeder Pigs**
- **4-H Lambs**
- **Pigs and lambs available for freezer**

**High quality, but quantity is limited due to downsizing.
It is advisable to reserve early.**

4726 S. County Road 300 W.
Greencastle, Indiana 46135
Home: 765-653-4342

Cell: 765-719-0242 (after 7 p.m.)

E-mail: mcdermitgenetics@comcast.net

*If you need a Tamworth that
looks like a Tamworth and
breeds on their own,
give us a call.*

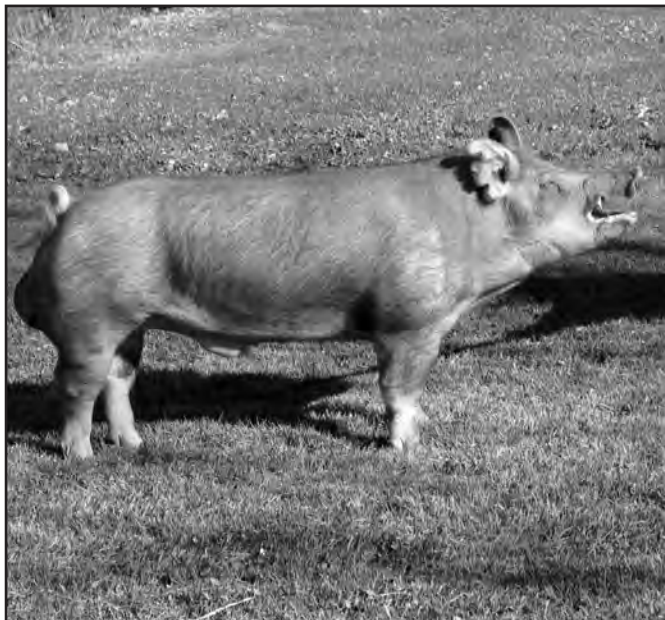
**New herd sire is from Fenton Brothers*





PRAIRIE STATE SEMEN INC.

Prairie State Semen, Inc.
968 Co. Rd, 1000 N
Champaign, IL 61822
800-282-0428



PSSS Mac's Pride 5-6

(MG Master Chaz X First Rate)

Bred by: McClaskey & McMullen

Owned by: PSS, McClaskey & McMullen

Littermate to 2009 Type Conference Champion Boar!

Sire was 2007 Type Conference Champion Boar!

Sire is 1/2 sib to 2008 Type Conference Champion Boar!

Dam was class-winning gilt at 2006 STC!

Terrific boar with broad shoulders, width & muscle!

• **Frozen Semen Available in 2012** •



**Tamworth-Duroc
litter due around
mid-May.**

Piglets should be ready to go to homes in mid-July. Pigs are fed organic feed, garden produce grown on our ranch, and occasional produce offerings from our local grocery store. — \$80

Contact Tara Felder
509.560.4331
www.3BellsRanch.com



A New England source for:

Santa Cruz sheep

Kerry cattle

Tamworth pigs

San Clemente goats



USDA inspected & approved farm raised meat for sale. Individual cuts, half, or whole carcass available.

Call us for rates!

THE **INN**  at **EAST HILL FARM**
460 Monadnock Street
Troy, New Hampshire 03465

www.east-hill-farm.com 1-800-242-6495

LaFollette & Koopman Showpigs



Producing Quality Tamworth's and Hereford's since 2002
Thank you to all of our Buyers for your purchases this past
year and we look forward to helping with your Tamworth
and Hereford needs in the future.

Dave LaFollette & Family
9680 E 550 N
Darlington, IN 47940
(765) 794-0203
(765) 366-8655 Cell
lafollette1958@hughes.net

Garritt L Koopman & Family
8297 N Old St Rd 55
Wingate, IN 47994
(765) 376-7750
koop1981@hotmail.com

Excited to introduce this years showpig prospects



FAITH, FAMILY, FARMING, FARMALLS, FINE HOGS
WE HAVE OUR PRIORITIES STRAIGHT!

Thanks to all who have used our genetics in the past and we look forward to your repeat business and to meeting all the folks who are searching for great Tamworth hogs to add to their farms!

BUCKEYE PRIVATE TREATY 4-H PIG SALE

SATURDAY APRIL 14

PREBLE CO. FAIRGROUNDS

EATON OHIO BARN OPENS 11AM SALE AT 2PM

SEMEN AVAILABLE UPON REQUEST

PAUL MORRISON FAMILY TAMS

2802 WEAVER STATION ROAD

NEW MADISON, OHIO 45346

HOME: (937) 996-5491 • CELL: (937) 459-0389

Email: paulnwmdsn@aol.com

TAMWORTH SWINE ASSOC.

621 N 850 W

Greencastle, IN 46135-7771

Farms Feed America