



Welcome to the Annual Publication of the
TAMWORTH SWINE ASSOCIATION



WWW.TAMWORTHSWINE.ORG



TAMWORTH ONLINE

Visit the Tamworth Swine Association online at www.TamworthSwine.org and on Twitter at <http://Twitter.com/TamworthSwine> — You'll always find the latest Tamworth news, stories, online forms, ads and breeder information, as well as articles and information about upcoming events.

Visit our website at WWW.TAMWORTHSWINE.ORG

Welcome to the Official Website of the TAMWORTH SWINE ASSOCIATION



www.TAMWORTHSWINE.ORG

WELCOME To The TAMWORTH SWINE ASSOCIATION Website

TAMWORTH SWINE ASSOCIATION
www.TamworthSwine.org
 Tamworth on Twitter
 CONTACT US!

If you are thinking of buying some pigs for the family farm or to do Farmer's Markets with good tasting meat, BETTER GIVE TAMS A TRY!

Categories: ADS — Breeders, ADS — For Sale, ADS — Products, ADS — Services, ADS — Wanted, Tamworth BREED, Tamworth BREEDERS, Tamworth EVENTS, Tamworth FEES

On Twitter: <http://Twitter.com/TamworthSwine>



Tamworth Swine Assoc
 73 Members
 306 Followers
 117 Following

Happy Holidays to all the Tamworth Swine Association Members!

ADVERTISE on TamworthSwine.org — 2012 RATE CARD

ADVERTISE on TamworthSwine.org — 2012 RATE CARD

ADVERTISE on TamworthSwine.org — 2012 RATE CARD

ADVERTISE on TamworthSwine.org — 2012 RATE CARD

ADVERTISE on TamworthSwine.org — 2012 RATE CARD

ADVERTISE on TamworthSwine.org — 2012 RATE CARD

ADVERTISE on TamworthSwine.org — 2012 RATE CARD

ADVERTISE on TamworthSwine.org — 2012 RATE CARD

ADVERTISE on TamworthSwine.org — 2012 RATE CARD

ADVERTISE on TamworthSwine.org — 2012 RATE CARD

THE TAMWORTH NEWS & WEBSITE ADVERTISING RATES

Tamworth Swine Association accepts advertising on both the www.TamworthSwine.org website AND in the upcoming 2014 Tamworth News publication. Full-page and half-page ads are published in the Tamworth News and on the website www.TamworthSwine.org.

- FULL PAGE AD — \$150.00 (website ad included)
- HALF PAGE AD — \$90.00 (website ad included)
- 1/4 PAGE AD — \$50.00 (website ad NOT included)

Subdomain Link — \$50.00 additional annual fee (details below)

Each published ad on the website has an associated listing in the major search engines. — For website advertisers, “Subdomains” are available for a \$50.00 annual fee. Subdomains provide a direct link to your ad on the Tamworth website (example: <http://YourName.TamworthSwine.org>). If you don't have your own website, this is an ideal way to have your own web page with your advertisement. — Promote the Subdomain as the link to YOUR PAGE online.

For Full-Page and Half-Page advertisers, 1.5” wide website display ads are also available. When clicked, display ads take a visitor to your website, or optionally, to your ad on the Tamworth website. These ads appear in the right-hand sidebar and are similar in size to the graphic for the Tamworth Swine Breeders Directory image. Contact us for details.

For Tamworth News advertising, visit <http://ADS.TamworthSwine.org>

Advertising: <http://ADS.TamworthSwine.org>

SAMPLE AD (Expanded View)

Paul Morrison & Family Tams — New Madison, Ohio

FAITH, FAMILY, FARMING, FARMALLS, FINE HOGS
 WE HAVE OUR PRIORITIES STRAIGHT!

Thanks to all who have used our genetics in the past and we look forward to your repeat business and to meeting all the folks who are searching for great Tamworth hogs to add to their farms!

BUCKEYE PRIVATE TREATY 4-H PIG SALE
 SATURDAY APRIL 14, PREBLE CO. FAIRGROUNDS,
 EATON OHIO — BARN OPENS 11AM SALE AT 2PM

Paul Morrison Family Tams, 2802 Weaver Station Road,
 New Madison, Ohio 45346 • Home: (937) 996-5491
 Cell: (937) 459-0389 • Email: paulnmrds@aol.com



FAITH, FAMILY, FARMING, FARMALLS, FINE HOGS
 WE HAVE OUR PRIORITIES STRAIGHT!

Thanks to all who have used our genetics in the past and we look forward to your repeat business and to meeting all the folks who are searching for great Tamworth hogs to add to their farms!

BUCKEYE PRIVATE TREATY 4-H PIG SALE
 SATURDAY APRIL 14, PREBLE CO. FAIRGROUNDS,
 EATON OHIO BARN OPENS 11AM SALE AT 2PM

PAUL MORRISON FAMILY TAMS
 2802 WEAVER STATION ROAD
 NEW MADISON, OHIO 45346
 Home: (937) 996-5491 • Cell: (937) 459-0389
 Email: paulnmrds@aol.com

SEMEN AVAILABLE UPON REQUEST

The Tamworth Swine Association Inc. Directors and Officers

OFFICERS

David LaFollette, President

9680 East 550 North, Darlington, IN 47940

Phone: 765-794-0203

Email: DLafollette@TamworthSwine.org

Nila Robinson, Vice President

4807 Kettner Road, Shiocton, WI 54170

Phone: 920-540-3900

Email: NRobinson@TamworthSwine.org

Secretary/Treasurer

Email: Secretary@TamworthSwine.org

DIRECTORS

(2013) Quint Harnacke • New Holland, IL • 217-519-2754

(2013) Tom Fenton • Winchester, OH • 937-695-0114

(2013) Tom Rake • Waunakee, WI • 608-849-7458

(2014) David LaFollette • Darlington, IN • 765-794-0203

(2014) Nila Robinson • Shiocton, WI • 920-540-3900

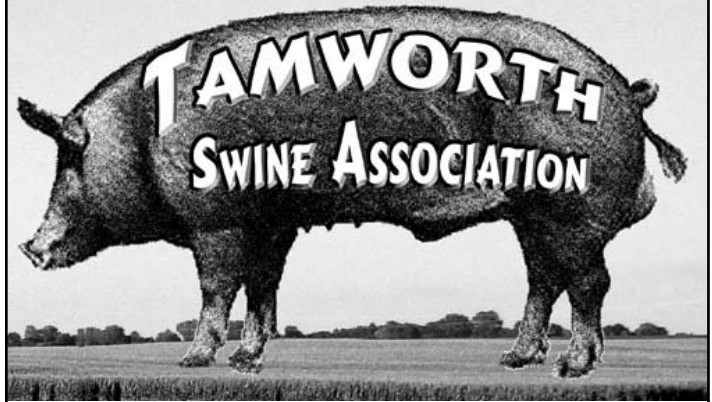
(2015) Brad Bradshaw • New Carlisle, IN • 574-220-6508

(2015) Don Dawson • Kempton, IN • 765-947-5255

(2015) Andy Howe • Star City, IN • 574-581-1105

INDEX OF ADVERTISERS

Brattain Farms Tamworths.....	11
ClintHigh Showpigs	5
Clothier Genetics.....	24
Dennis Farms Tamworths.....	6
Doug Millar Farms	4
East Hill Farm	24
Emerald Farms	16
Harnacke Tams.....	23
LaFollette & Koopman Showpigs	Inside Back
Leaning Pine Farms	15
McDermitt Genetics.....	23
New Heritage Farms.....	6
Paul Morrison Family Tams	Back Cover
Prairie State Semen, Inc.....	15
Rake Genetics	12-13
Swenson Farms.....	24
Whistleberry Farm	14



FEATURES

Tamworth Website	Inside Front Cover
Advertising Rate Card	Inside Front Cover
Tamworth Queens	2
2013 National Show & Sale.....	2
Secretary Shirley Brattain Retires	3
Letter From The President.....	3
Register Your Pig.....	10
Youth of Today (photos).....	17
Jr./Sr. Membership Applications	18
Registration Application	19
Registration Completion Guide.....	20
Owner Transfer Application	20
Tamworth Origin & History.....	21
Swine Gestation Table.....	21
Tamworth Ear Notching System	22
2012 Tunbridge Swine Show.....	23

DEPARTMENTS

Officers and Directors.....	1
Tamworth News	2,3
Fees for Registration	7
Tamworth Information.....	7
2013 Breeders Directory.....	8-10

www.TamworthSwine.org

Copyright © 2013 Tamworth Swine Association

(State Fair cover photos courtesy of Mapes)



TAMWORTH NEWS

2013 TAMWORTH QUEENS

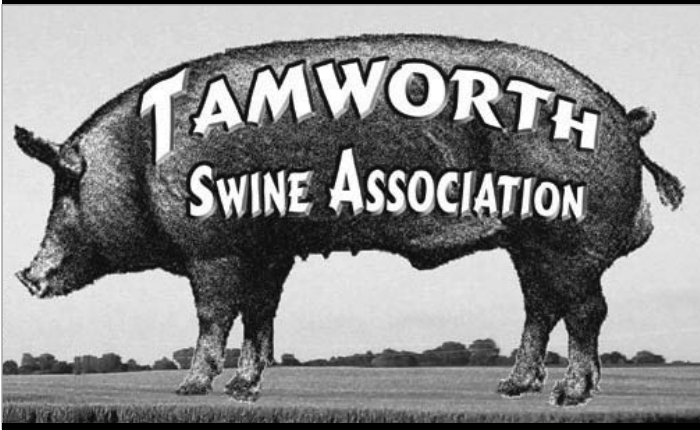
This year we are lucky to have our same two Tamworth Queens. We appreciate having Courtney and Samantha informing the public about the Tamworth Breed. They exhibit their Tamworth pigs at their County Fairs and also at the Indiana State Fair. They also help with the activities of the Tamworth Breed. — “Thanks” girls!



COURTNEY GULICK

SAMANTHA PIGG

2013 Tamworth Association NATIONAL SHOW & SALE



Visit our website WWW.TAMWORTHSWINE.ORG

ANNUAL MEETING & BANQUET

SATURDAY AUGUST 31ST

EXHIBITION HALL

PUTNAM COUNTY FAIRGROUNDS

SHOW & SALE

SUNDAY SEPTEMBER 1ST

PUTNAM COUNTY FAIRGROUNDS

US 231 NORTH, GREENCASTLE, IN

The Tamworth Swine Association will hold it's Annual Meeting & Banquet on Saturday August 31, 2013 at the Putnam County Fairgrounds with Social hour beginning at 5:30pm EST followed by dinner at 6:00pm EST. The Show and Sale will take place on Sunday September 1, 2013 with the Junior Show activities beginning at 11am and the Breeding Show beginning at 12 noon, followed by the fun auction at 4:30, and concluding with the breeding stock being sold at 5:00pm, at the Putnam County Fairgrounds on US 231 North Greencastle, Indiana. Entries must be at the fairgrounds by 5pm Saturday August 31, 2013 if you are delayed please call Dave at 765-366-8655.

If you plan to attend, Entries must be recieved by August 1, 2013.

For information, contact

Dave LaFollette 765-794-0203 - email DLafollette@TamworthSwine.org

or Nila Robinson 920-540-3900 - email NRobinson@TamworthSwine.org

Tel: 765-794-0203 • Email: SALE@TamworthSwine.org

Look for the latest news and updates at www.TamworthSwine.org

Motels: College Castle Motel, 231 South, Greencastle, Indiana (765) 653-4167.

Remember, the gilt you show in the Junior Show may not be shown in the regular Type Conference Show. Pigs shown in the Junior Show are not to be sold.



TAMWORTH NEWS



The Board announces with regret the retirement of our long time Secretary, Shirley Brattain. The Brattain's have been involved in breeding and showing Tamworth's since 1960. They have made a great contribution to the breed and we have been privileged to have Shirley



as our secretary since December 2001, when she succeeded Tom Fenton. Please join us at our Annual Meeting and Banquet on August 31, 2013 to help us celebrate Shirley's retirement.

THANK YOU SHIRLEY FOR YOUR YEARS OF DEDICATED SERVICE TO THE NATIONAL TAMWORTH ASSOCIATION!

THANKS FROM THE PRESIDENT

I would like to extend my thanks to everyone who attended and exhibited at the 2012 National Show and Sale. If you haven't attended before or if you haven't attended in the last few years, please plan to do so in 2013. I would like to thank all who helped make the show and sale a success despite having the wettest show and sale in history.

Congratulations to the 2012 junior show winners. We will again have a junior show before the National Show and Sale. It will be a gilt only show. The gilts must be registered to the exhibitor and the exhibitor needs to be a junior member of the Association. You can check in for the junior show on August 31 or on September 1 by 10 a.m. Please bring your pedigree and health papers with you to check in. The show will start at 12 noon. Showmanship will begin immediately following the show. The cost is \$10 per head and there is no charge for showmanship. Please call with any questions.

The Tamworths are again invited to attend this year's Summer Type Conference and National Junior Show in Springfield, Illinois June 25-29. You can get up-to-date information at www.teampurebred.com. This is a very youth-oriented event and a great time is had by all. Last year we had a total of 24 barrows and gilts which represented the Tamworth breed very well and was welcomed by everyone involved.

I hope that everyone is having a successful farrowing season and hope to see old and new faces at this year's National Show and Sale.

Thank you!

David LaFollette, President

765-366-8655 (Cell)

765-794-0203 (Home)

DLafollette@TamworthSwine.org





Congratulations to the Dale Moore Family for showing the Reserve Champion Tamworth Gilt at the IN State Fair Jr Show.

Our genetics had a great show season in 2012, especially the Tamworths!
Reserve Grand Gilt, WI State Fair
Reserve Grand Boar, WI State Fair
Reserve Grand Gilt, OH State Fair
Reserve Grand Gilt Junior Show, IN State Fair
Reserve Grand Gilt, National Tamworth Show
Reserve Bred Gilt, National Tamworth Show
Champion Landrace Gilt, St. Joe Co
Reserve Champion Landrace Gilt, St. Joe Co
Champion Tamworth Barrow, St. Joe Co

Champions Start Here Club Pig and Lamb Sale

Saturday, April 6, 2013

Hog Sale at 6:00 PM EST Viewing at 4:00 PM EST
Show Rite Show Feeds Presentation at 5:15 PM EST

We will be offering nine different breeds plus crossbreds: Berkshire, Chester White, Duroc, Hampshire, Hereford, Landrace, Spots, Tamworth, Yorkshire, and Crossbreds.

Auctioneer: Bob Moore

Terms: Cash, Check, MasterCard, Visa

Please call for specific breed quantities. All announcements made sale day take precedence over printed material. Not responsible for accidents. Sale located at Doug Millar Farm, 27947 Darden Road, New Carlisle, IN 46552.

Doug Millar
(574) 289-9675
(574) 298-3722
millars4@yahoo.com

Sale Day Phone
(574) 220-6508
(574) 298-3722
www.zahlsfeed.com
/golden_acres_farm

Brad and Kelley Bradshaw
(574) 233-3745
(574) 220-6508
goldenacresfarm@yahoo.com



Kelsi Watts with her Champion Tamworth Barrow, St. Joe Co.

Don't forget the Summer Type Conference, National Junior Show, June 25-29th in Springfield, IL. Help represent the Tamworth breed!

Lucas with a piglet of "Minnie's", who was Reserve Grand Champion Gilt, Ohio State Fair.



Clint High SHOWPIGS

SPRING PIG SALE

Saturday, April 13 • 4 p.m.

At the farm, 5675 New Vienna Road, New Vienna, Ohio

Selling more than 100 January and February Berkshires, Chester Whites, Durocs, Herefords, Tamworths, Yorkshires and crossbred club pigs.

Auctioneer: Rick Williams



Supreme Champ Gilt Session 1 & Champion Tamworth Gilt, 2012 Ohio State Fair



Champion Open Tamworth Gilt & Champion Open Hereford Gilt, 2012 Indiana State Fair



Class Winning Barrow, 2012 Ohio State Fair



Champion Open Tamworth Barrow & Res. Champion Jr. Tamworth Barrow, 2012 Ohio State Fair



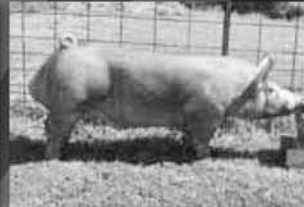
NOW OR NEVER
Res. Champion Duroc Boar, 2012 Ohio State Fair
At Cutting Edge



Res. Champion Gilt, 2012 Green Co. Fair



PLAYBOY
Res. Champion Crossbred Boar, 2012 Ohio State Fair
Sold to Darby Valley



HIGH GEER
Private treaty purchase at Shaffer's Goldrush



FIREMAN
Res. Champion Hereford Boar, 2012 Indiana State Fair
At Shaffer's Goldrush



Champion Tamworth Barrow, 2012 Ohio State Fair



Champion Jr. Hereford Gilt, 2012 Indiana State Fair
Class-Winner, 2012 Summer Type



Champion Tamworth Boar, 2012 Indiana State Fair

Designed by Seedstock EDGE



Champion Hereford Barrow MQP, 2012 Ohio State Fair

Buckeye Elite Pig Sale

Saturday, April 20 • 7 p.m.

Preble County Fairgrounds • Eaton, Ohio

We will be consigning to Real McCoy Customer Appreciation Sale and the NSR & CPS Extravaganzas.

Don Geer & Family: (c) 937.218.1353

Steve Kenney & Family: (c) 937.302.0785

Kasey Smith & Family: (c) 740.505.8845

Clint High SHOWPIGS

www.clinthighshowpigs.com



New Heritage Farms

Registered Tamworth Pigs, Toledo, WA
PiGturesque Pasture Pigs and Pork



www.newheritagefarms.net

www.nwtamworthpigs.com

Vickie Hinkley

360-304-2786

newheritagefarms@yahoo.com

DENNIS FARMS TAMWORTHS



- PASTURE HARDY PIGS RAISED NATURALLY
- NO FEED GRADE ANTI-BIOTICS
- EXCELLENT GRAZERS
- NO FARROWING HUTS OR CRATES
- EXCEPTIONAL MOTHERS

WE ONLY BREED THE BEST

GREG & JANIE DENNIS
RANBURNE, ALABAMA

~

GREG 770.862.7379
greg@dennis-farms.com
JANIE 770.862.2531

For more information please visit us online

www.dennis-farms.com



NOTICE

FEES FOR REGISTRATION (Effective Sept. 1, 2012)

All-in-one litter registration animals up to 90 days (Members)	20.00
All-in-one litter registration animals up to 90 days (Non-Members).....	25.00
All-in-one litter registration animals after 90 days (Members)	35.00
All-in-one litter registration animals after 90 days (Non - Members)	40.00
Each transfer (any sale, except pigs in dam) including all transfers on original application.....	3.00
Duplicate Certificate of Registration	3.00
Changing name of recorded animal	3.00
Transfer forms - <i>(PDF form available for free on website)</i>	25 for 2.00
All-in-one litter registration Form - <i>(PDF form available for free on website)</i>	20 for 5.00
Life Membership Fee.....	10.00
Transfer of Membership	1.00
Annual Maintenance Fee (due January 1st every year).....	25.00

ANY RUSH WORK NEEDED WITHIN 7 DAYS, FEES WILL BE DOUBLED

Junior membership free to a bona fide 4-H and FFA member up to age 21. Application blanks available from Association Office. Must be signed by Advisor or Leader.

TAMWORTH SWINE ASSOCIATION

www.TamworthSwine.org

TAMWORTH INFORMATION:

- The National Tamworth Association is busy promoting our great grazer hogs and they are the best tasting meat for the Farm Markets. They are recognized for their great taste at these markets.
- Tamworths are super hogs for the small scale farmer, as they don't require an expensive set up and can make do with older facilities. They can farrow outside except in extreme cold. Some bedding and a shed will do.
- Tamworths have a really nice temperament and like being around people and the little pigs are lots of fun to watch as they run and play.
- We registered over 200 litters and 1535 pigs this past year—many of whom went to 4-H club members for county shows and state fairs. Tamworths have breeders in several states.
- The National Tamworth Type Conference will be held September 1st & 2nd this year at Greencastle, IN. We have attendees from several states.
- There were approximately 100 head entered in our last National Show & Sale.

If you are thinking of buying some pigs for the family farm, to do Farmer's Markets with good tasting meat — BETTER GIVE TAMS A TRY!

Check website www.TamworthSwine.org for National Show and Sale Entry Rules or call one of the officers or directors.

National Show & Sale August 31st & September 1st — Greencastle, Indiana. Banquet at 6:00pm this year.



2013 Breeders Directory

ALABAMA:

Dennis Farms • Greg and Janie Dennis • 1582 CR 852 • Ranburne, AL 36273 • (770) 862-7379 • greg@dennis-farms.com
Grace Valley Farm • Lynn Thompson • 638 County Road 367 • Trinity, AL 35673 • (256) 476-4177
JK Heritage Farm LLC • Jeff Price • 6545 County Road 59 • Moulton, AL 35650 • (256) 974-3719
Watkins, Jeremy & Tinalanie • 668 Dick Allen Road • Vernon, AL 35592 • (205) 242-1074 • tsfarmsalabama@gmail.com

ARKANSAS:

Harris, Ted • 81 S. Corinth Road • Ash Flat, AR 72513-9659
Knapp, Duane • 305 Price Ford Road • Heber Springs, AR 72543 • (501) 728-3345

CALIFORNIA:

Wulf, LW, DVM • P.O. Box 8178 • Marysville, CA 95901 • (530) 743-8005

COLORADO:

Pikes Peak Community Foundation • Ventucci Farms • P.O. Box 1443 • Colorado Springs, CO 80901-1443
Riverdale Farm LLC • Paul Greaves • 13200 E. 160th Avenue • Brighton, CO 80601 • paul@plattcrossing.com

CONNECTICUT:

Footsteps Farm • Greg Floyd • 55 Lawrence-Eleanor Street • Stonington, CT 06378 • footstepsfarm@yahoo.com
Lang, Philip B. • 175 Geer Mountain • South Kent, CT 06785 • (860) 927-4457 • pblang@gmail.com

GEORGIA:

White, Curtis • 1039 Jimmie Stevens Road • Dublin, GA 31021 • (478) 272-0071

ILLINOIS:

Boucher, Gustin A. • 7268 N 2250 Road • Bourbonnais, IL 60914 • (815) 468-3910
Boucher, Zachary • 7268 N 2250 Road • Bourbonnais, IL 60914 • (815) 468-3910
Devore, James Kurtis • 849 Seagraves Ave • Mulberry Grove, IL 62262 • (618) 326-7381
Harnacke, Cameron • 1620 100th Avenue • New Holland, IL 62671 • (217) 445-2506
Harnacke, Quint • 1620 100th Avenue • New Holland, IL 62671 • (217) 445-2506 • qharnacke@aglandfs.com
LaForge, Christopher • 1766 100th Avenue • New Holland, IL 62671 • (217) 737-1185 (cell)
McClure, Jason • 11367 E 450 N. Rd • Shirley, IL 61772
Menges Brothers • 16262 E. 2750 N. Road • Danville, IL 61834
Moynahan, Thomas • 1046 E 10000 N. Rd • Grant Park, IL 60940
Navis, Ron • 5968 N. East Road • Heyworth, IL 61745 • (309) 473-3456 • redpigz@msn.com
Pine, Donald • 56 Archer Avenue • Marshall, IL 62441-1066 • (217) 826-1111
Prairie State Semen Inc. • 968 Co Road 1000 • N. Champaign, IL • (800) 282-0428
Smith, Robert D. • RR #1, Box 137 • Nebo, IL 62355 • (217) 734-9092
Sugar Creek Ranch • Mark H. Thomaschfsky • 30688 Fulfs Road, Sterling, IL 61081 • (815) 590-0074
Swenson, Glenn • 2953 N 4750 Road • Sandwich, IL 60548 • (815) 786-2786 • gswen@webtv.net
Thornpaw Lane Farm • Elizabeth Giannesehi • 360 Crestwood • Algonquin, IL 60102 • (224) 587-8832 • thornpawlanefarm@att.net
Worthington, Mike • 2028 E 600 N Road • Pana, IL 62557

INDIANA:

Baker's Tamworth • Ed & Becky Baker • 4825 N Regna Place • West Terre Haute, IN • 47885 • (812) 535-3643 • ebaker@ampacet.com
Brattain Farms • M & S Brattain • 621 N 850 W • Greencastle, IN 46135 • (765) 653-4913 • brattainfarms@webtv.net
Bright, Michael Scott • 4651 W SR 124 • Wabash, IN 46992
Burnett, Chris • 9149 W 300 N • Tipton, IN 46072
Cook, Charles • 10893 E 450 N • Charlottesville, IN 46117
Cook, David & Jill • 5569 S SR 109 • Knightstown, IN 46145
Countryside Stock Farm • Clinton Weiss • 7297 East Base Road • Union City, IN 47390-8318 • (765) 964-7261 • clintweiss@yahoo.com
Dawson, Don • 3621 N 1175 W • Kempton, IN 46209-9322 • (765) 947-5255
Francis, Phil • 497 E 300 S • Crawfordsville, IN 47933 • (765) 362-0139
Golden Acres Farm • Doug Millar Family • 27947 Darden Rd • New Carlisle, IN 46552 • (574) 220-6508 (Brad) • goldenacresfarm@yahoo.com

Goodman, Brent • 60 Carver Lane • Bedford, IN 47421 • goodmanh@myway.com
Gulick, Jeff & Family • 816 Bur Oak Court • East Lafayette, IN 47909
Ireland, Steve & Sandra • 653 W SR 43 • Veedersburg, IN 47987
Kochert, Frank • 4640 S 900 E • Lafayette, IN 47905
Koopman, Garrit & Family • 8297 N Old SR 55 • Wingate, IN 47994 • (765) 275-2296 • koop1981@hotmail.com
LaFollette, Dave • 9680 E 550 N, Darlington, IN 47940 • (765) 794-0203 • lafollette1958@hughes.net
Lambring, Max • 4498 E CR 100 S, Seymour, IN 47274
Lanes End Farm • Cory Lodge & Family • 3399 W 300 S • Peru, IN 46979 • (765) 473-5367
Mac's Tams • Dave McClaskey • 8822 E US 136 • New Ross, IN 47968 • (765) 723-1326 • Cell (765) 366-2119
McDermitt Genetics • George McDermitt • 4726 S CR 300 W, Greencastle, IN 46135 • (765) 653-4342 • mcdermittgenetics@comcast.net
McMullen, Larry • 4699 E 750 S • Ladoga, IN 47954-7202 • (765) 942-2059 • Cell (765) 376-9986
McNabney, Brian • P.O. Box 96 • Laketon, IN 46943 • (260) 982-2509
Mel-O-Roc Swine Farm • Terry Melloncamp • 5633 S SR 39 • Brownstown, IN 47220
Moor-ee, Dale & Family • 4557 W SR 246 • Farmersburg, IN 47859 • (812) 898-2042
Peters, Dave • 497 E 300 S • Crawfordsville, IN 47933
Shaffer, Kim & Carolyn • 3699 W Lincoln Way • Columbia City, IN 46725-9128 • kcse@kconline.com
Smith Farms • Larry Smith • 3277 S. 500 W., New Castle, IN 47362
Thistledown Farm • James Smith • 7193 CR 59 • Spencerville, IN 46788-9429 • (260) 238-4126 • smithjwx1@hotmail.com
TK Farm • Ronald McCormick • 7357 N Kitchen Road • Mooresville, IN 46158 • (317) 831-5630
Twin Cedars • Bob Brown • 8418 S. 300 W. • Clayton, IN 46118

IOWA:

Albertson, Frank • 2689 II Avenue • Toledo, IA 5342-9547
Jensen, Kyle A. • Fennel Creek Farm • 2200 185th Street, P.O. Box 61 • Corydon, IA 50060 • (641) 874-5973
Lewis, Stephen • 1305 Virginia Street • Columbia, IA 50057 • vanderlewis@hotmail.com
Schmitz, Lindsay • 1151 State Highway 150 • Fort Atkinson, IA 52144 • jlschmitz@fbx.com
Werling, Ed • 2602 Parrish Ave • Independence, IA 50644
Westercamp, John C. • 30169 Highway 2 • Bonaparte, IA 52620-8138 • (319) 878-4146

KANSAS:

Sedgwick County Zoo • 5555 Zoo Boulevard • Wichita, KS 67212-1698 • (316) 266-8219

KENTUCKY:

Bush, Ken • 3076 Waterworks Road • Winchester, KY 40391-8057 • (859) 744-0198
Contini, John & Clay • 4344 Poor Ridge Pike • Lancaster, KY 40444 • (859) 339-0747 • jdmctini@peoplepc.com
Cornish, Ray • 1395 Shakertown Road • Harrodsburg, KY 40330 • (859) 583-8757
Leaning Pine Farms • John Bruner • 473 Edward Meece Road • Science Hill, KY 44253 • (606) 271-0582
Philpot, Randy • Philpot Family Farm • 4317 Marydell Road • London, KY 40741 • (606) 877-7761 • bfvd458@hotmail.com

MAINE:

Coastal Critter • George Morton • 122 Corea Road • Prospect Harbor, ME 04669
Mandala Farm • Sara Faull • 46 Youngs Farm Road • Gouldsboro, ME 04607 • (207) 963-2984
Ole Sow Farm – Jessika Zanoni • 1050 County Road • Lubec, ME 04652 • (207) 733-2569
Wild Asparagus Farm • Box 169 Whitefield, ME 04353 • (207) 582-9058

MARYLAND:

Ohlinger, Keith • 22400 Rolling Hill Lane • Laytonsville, MD 20083 • (301) 460-7004
Whitmore Farm • William Morrow • 10720 Dern Road • Emmitsburg, MD 21727 • (301) 447-3611



MASSACHUSETTS:

Winnimusset Farm • Sharon Hamel & Sean Munzert • 580 Wine Road, New Braintree, MA 01531 • (413) 477-6294 • winninussetfarm@localnet.com
Buttonwood Park Zoo • 425 Hawthorn Street • New Bedford, MA 02740 • (508) 991-6178 • www.bpzoo.org
Codman Community Farms Inc. • 58 Codman Road • Lincoln, MA 10773-3714 • harryfeed@vei.net
Dickens, Joel & Family • 256 Baxter Road • Lumberton, MA 10773-3714 • jdickens@pree.edu
Glas Logan Farm • 210 Scott Road • Ashby, MA 01431 • (978) 987-7468 (Tom) • tfr@myway.com
Plimoth Plantation • 137 Warren Avenue, P.O. Box 1620, Plymouth, MA 02362-1620 • (508) 746-1622

MICHIGAN:

Carson, Fred • 351 N Brucker Avenue • Hesperia, MI 49421
Heritage Acres Tamworths • Stephen Hicks • 31055 Portage Road • Niles, MI 49120 • (269) 687-2698
Monarch Farms • Melvin Meiske • 2916 Townline Road • Midland, MI 48642-9211 • (989) 835-8309
Nebel Farm • Tom Nebel • 6038 27.15 Lane • Gladstone, MI 49837 • (906) 428-9619
Old Homestead Family Farm • Brian Herbert • 35684 64th Avenue • Paw Paw, MI 49079 • (269) 330-6547 • oldhomesteadfarm@hotmail.com
Schaller, Jamie • 1112 Carpenter Road • Davison, MI 48423 • jps35@daimlerchrysler.com
Workman, Paul • 7346 W 12 1/2 Mile Road • Mesick, MI 49668

MINNESOTA:

Deutz, Allen • 2866 County Road 35 • Marshall, MN 56258 • (507) 530-0725 • eapdeutz@gmail.com
DuFault, Melissa • 19429 New Eagles Way N.E. • Hines, MN 56647 • (218) 835-8825
Hilltop Pastures Family Farm • Thomas Austin • RR 1, Box 16703 • Fountain, MN 55935

MISSISSIPPI:

Wood Pile Ranch • James & Delores Townsend • 973 Highway 494 • Union, MS 39365 • (601) 774-8977 • woodpileranch@aoh.com

MISSOURI:

4-K Land & Cattle Company • Bob Rankin Family • 800 Rolling Wood • Columbia, MO 65202
Antelope Creek Farms • Daniel E. Indgjer • P.O. Box 45 • Drexel, MO 65742 • (316) 657-2196 • e.dindgjer@hotmail.com
Black, Jon • 9083 Liv 529 • Chillicothe, MO 64601
Croy Tamworths • Dennis, Erin, Klye Croy • 24166 Slade Avenue • Gallatin, MO 64640 • (660) 663-2463 • dcroy13@hotmail.com
Deutschman, Lee • 23635 State Highway HH • Gallatin, MO 64640
Gooding's Golden Acres • Dave & Betty Gooding • 31785 278th Street • Gallatin, MO 64640 • bettylg@greenhills.net
Johnson, Tim & Ashley • 5924 SW State Road D • Polo, MO 64671
Littlefield Livestock • John C. Littlefield • 4157 Nighthawk Road • Diamone, MO 64840 • (417) 325-4274 • littlefields@cn6.k12.mo.us
Orbon, Robert C. • 1459 Trent Road • Washburn, MO 65772 • (417) 435-2538
Rains Tams • David Rains & Family • 23500 278th Street • Gallatin, MO • (fax) (660) 663-4135
Ray Tamworths • Stan Ray • 402 Benton • Gallatin, MO 64640 • skdrray@hotmail.com
Street Farms • Bob & Carol Street • 199 Colbert Lane • P.O. Box 36 • Whiteside, MO 64487
Wright, Megan • 32793 Highway 0 • Keytesville, MO 65261
Wyble, Greg • 23598 Pike 301 • Bowling Green, MO 63334

NEBRASKA:

Diamond E Ranch Inc. • Nile Greathouse • 3613 Road 47 • Harrisburg, NE 69345-9524 • (308) 436-2377

NEW MEXICO:

Marr, John • 451 W Meadowlark Lane • Corrales, NM 87048 • (505) 288-8526

NEW HAMPSHIRE:

Aikman, Marian Robin • 118 Sligo Road • Rollingsford, NH 03869-5810
First Light Farm LLC • 110 Isaac Frye Highway • Wilton, NH 03086 • (603) 654-8811 • manager@firstlightfarmnh.com
Jones, Mary • 161 Post Road ZZ • North Hampton, NH 03862 • (603) 964-2925
The Inn at East Hill Farm • Dave Adams • 460 Monadnock Street • Troy, NH 03465 • info@east-hill-farm.com

NEW YORK:

Adams, Frederick W. • 7 Voorhess Avenue, Camden, NY 13316 • (218) 639-1839
Becker, Thomas • P. O. Box 57 • sloansville, NY 12160
Blaney, Ruth • 1884 County route 43 • Fort Edwards, NY 12828 • (518) 747-3494
Dharma Lea LLC • Paul & Phyllis Van Amburgh • 105 Durope Road • Sprakers, NY 12166 • (518) 673-2460
Flynn's Brook Farm • Robert W. Rowe • 113 Flynn's Line Road • Burke, NY 12917 • (518) 483-5136 • flynnbrookfarm@gmail.com
Hess, Frank & Carol • 17 Dow Road • Moira, NY 12957 • (518) 529-0537
Hicks, Brian • 4052 City Road 10 • Depeyster, NY 13633
Hidden Hollows • Ian G. Witherington • 12770 Guernsey Hollow Road • Frewsburg, NY 14738 • (716) 569-6783
High Meadows Farm • Lauara B. Hussey • Webster Brook Road, Box 98 • Delhi, NY 13753 • (607) 746-7845 • vanclan@delhiel.net
Kingbird Farm • Michael • Karma Glos • 9398 West Creek Road • Berkshire, NY 13736 • (607) 657-2860
Lord, Michael & Shaun Ann • 1468 Route 39 • Forrestville, NY 14062 • (716) 965-2502 • caseman@netsync.net
Lupo Realty LLC • 676 East Star Buck Lane • Fort Ann, NY
O'dell, Dr. Nancy R. • 36 Little Road • Mountain Dale, NY 12763 • (845) 434-0870 • odenfarm@gmail.com
Scott Family Farm • John Scott Family • 193 Jersey Lane • Cobleskill, NY 12043
T-Meadows • Rich Tilyou • 3732 Ewings Road • Lockport, NY 14094 • Rr72020@peoplepc.com
Twin Ponds Farm • Bill Bredderman • 156 Sprakers Road • Sloansville, NY 12160 • (518) 965-5506 • bbredderman@gmail.com
Uphill Farm LLC • Helena Kagan • Salt Point Turnpike • P.O. Box 53 • Clinton Corners, NY 12514 • (845) 266-5005

NORTH CAROLINA:

D & E Swine Farm • Clarence Durham • 470 Andrews Store Road • Pittsboro, NC 27312 • (919) 933-2969
Grateful Growers Farm • 3006 Mack Ballard Rd • Denver, NC 28037 • (828) 234-5182 • info@99farm.com
Wooten, Julian • 1106 Gould Road • Jacksonville, NC 28540 • (910) 346-6885

OHIO:

Arrowhead Farm • Wm. Horse SR. and Jr. • 6491 Miller's Chapel Road • Hillsboro, OH 45133
Blair's Farm • Tim Blair • 2997 Harrison Road • Hollansburg, OH 45332
Campbell Brothers • 17790 State Rt. 339 • Waterford, OH 45786 • (740) 984-8769 • campbellgenetics@gmail.com
Cherokee Valley • Carie & Jarrod Starr • 12320 Lonesome Road • Thornville, OH 43076 • (740) 984-8769 • cherokeevalleybison@yahoo.com
Emerald Farm • Tom & Connie Fenton • 200 Centenary Road • Winchester, OH 45697 • (937) 695-0014 • (937) 217-0287 (cell)
Fenton Brothers • 22050 State Road 136 • Winchester, OH 45697 • (937) 695-0014
Grover, Chas • 2906 Parrott Station Road • Washington C.H., OH 43160 • (740) 426-6215
Helberg, Marcia • 5130 Orangeville-Kinsman • Burghill, OH 44404 • (330) 240-8438
Hendricks Preferred Stock • Ric Hendricks • 08838 St. Rd. 34 • Bryan, Union, OH 43506 • (419) 636-1694
Jones, Mike • 2264 Alliance Road • Deerfield, OH • (330) 597-6144 • g.mike-jones@neoir.com
Maple Grove Farms • Phil Grover • 2906 Parrott Station Road • Washington C.H. OH 45150 • (740) 426-6215 • grover.1@osu.edu
Morrison, Paul & Family • 2802 Weaver Station Road • New Madison, OH 45346 • (937) 996-5491 • Cell (937) 459-0389 • paulnwmdsn@aol.com
Pauley's Rowdy Acres • Jim & Stephanie Pauley • 237 Bihl Road • Franklin Furnace, OH 45629 • steph@pauleysrowdyacres.com
Spring Hill Farm • David T. Fogle • 5757 Spring Hill Road • Newark, OH 43056 • (740) 404-5897 • dfogle@realisticfinancial.com
Spring Valley Farms • Clinton Finney Family • 200 County Road #1 • Rayland, OH 43943 • (740) 359-3737
Steel Farm • Marsha Steel • 26 Main Street • Germantown, OH 45327 • (937) 855-2376 • hoja948@yahoo.com
Threewits, Keith • 10933 Hillgrove-Ft. Recovery • Union City, OH 45390

OKLAHOMA:

Cedar Farm • James H. Shaw • 6336 S 209 W Avenue • Sand Springs, OK 74063 • (918) 224-2566 • injshaw@hotmail.com



OREGON:

Claypool, Lynda • 11770 N.W. Pike Road • Yamhill, OR 97148 • (503) 810-3466

PENNSYLVANIA:

Dancing Heart Farm • Marcus Briggs • 233 Priest Hollow Road • Russell, PA 16345 • (814) 757-8119 • mncbriggs@kinzua.net

Reed, James • 122 Coal Hill Lane • Slippery Rock, PA 16057

SOUTH CAROLINA:

Broken Wing Farm • Bill Welch • 331 Penson Road • Honea Path, SC 29654 • (864) 275-8801

Gold Leaf Farm • Claudia Donnelley • 210 B&L Lane • Gaston, SC 29053 • (803) 755-8184 • jasonclaudia@bellsouth.net

Mac's Farm Supply • 7051 Cottageville Highway • Round O., SC 29474

Zarkovacki, John • 28 North Point Royal Drive • Hilton Head, SC 29928 • (843) 342-5651 • jzarkovacki@fairfieldcompanies.com

TENNESSEE:

Caryonah Hunting Lodge • Patrick Garrison • 220 Wild Boar Lane • Crossville, TN 37337 • (931) 277-3113 • caryonah@frontier.net

Diamond D Tams • Darrin & Jenny Drake • 69 Cowan Valley Lane • Hickman, TN 38567 • (615) 683-5556 • naturalmeat@aol.com

Kemmer, Mitch • 4239 Dogwood Road • Grandview, TN 37337 • (931) 456-4643

Three Meadows • Roy & Treina Blair • 2487 Fred White Road • Columbia, TN 38401 • (931) 380-1146

TEXAS:

Brewer, Mary Ann • 1449 County Road 2297 • Cleveland, TX 77327 • (281) 592-3252

Cobb, Manning • 266 CR 34520 • Sumner, TX 75486 • (903) 784-5751

VERMONT:

Green Mountain Heritage Farm • Matt & Michelle Whalen Family • 3354 Pepper Road • Chelsea VT 05038 • (802) 431-3478 • vtheritagefarm@yahoo.com

Hogwash Farm • 708 Four Goodrich Corners • Norwich, VT 05055 • (802) 649-8807

Morgan, Jay • Box 348 • Concord, VT 05824

Whalen, Michael & Diana • 2 Whalen Road • Randolph Center, VT 05061 • (802) 728-5337

VIRGINIA:

Bright, Larry • 794 Spangler Mill Road • Floyd, VA 24091 • (540) 745-5790

Copper Hill Farm • William K. Munzing • P.O. Box 167 • Copper Hill, VA 24079 • (540) 929-4455

WASHINGTON:

Craig, Mike • 3817 NW 188th Street • Ridgefield, WA 98642 • (360) 887-3262 • mdc.cascadia@mac.com

Gustavsen & Co. LLC • April Jones • 4739 NW 199th Street • Ridgefield, WA 98642 • (360) 635-4334

New Heritage Farms • Vickie Hinkley • 834 Spencer Road • Toledo, WA 98591 • (360) 304-2786 • newheritagefarms@yahoo.com

The Farmstead • Nick & Rachel Taylor • 3701 Pacific Avenue SE 433 • Olympia, WA 98501 • (360) 280-6730

WEST VIRGINIA:

Payne, Claude G. • 3504 Warm Springs Road • Shenandoah Jct. WV 25442 • (304) 676-9879

White Oak Ridge Farm • Roy, Louis and Megan • R.R. Box 85011 • Phillipi, WV 26416 • (304) 457-2953

WISCONSIN:

Bolder, Chuck • W 1046 Vasaheau Road • Gleason, WI 54435 • (715) 873-4091

Clapper, Bob • 722 Center Street • Lake Geneva, WI 53147 • (262) 248-0103 • c.clapper@slds-services.com

Cricket Dawn Farm • Mark Kraklow • N 10658 Med Lake Road • Iola, WI 34945

Dominion Valley Farm • Brandon Dykema • 8375 Midland Drive • Allenton, WI 53002 • (262) 269-9423

Dougherty, Bob & Charlotte • P.O. Box 153 • Darlington, WI 53530-0153

Gill, Bryant & Brandon • 29770 State Highway 81E • Platteville, WI 53818

Rake, Tom • 6840 Schumacher Road • Waunakee, WI 53597-9715 98284 • (608) 849-7458

Robinson, Nila • 4807 Kettner Road • Shiocton, WI 54170 • (920) 540-3900 • nila@nilarobinson.com

Robinson, Rick • W 2636 St. Charles Road • Clinton, WI 53014 • (715) 305-4897 (cell) • lighthousehomeinspection@tds.net

Smith, Cody, Kelly & Raychel • N 7639 French Road • Johnson Creek, WI 53038 • (920) 988-4984

Speth, Martin • W 8178 Creek Road • Delavan, WI 53115 • (262) 882-4779

REGISTER YOUR PIG!

Remember, the success of your association is determined by your participation and, in turn, by the number of pigs you register. The board of directors have made it mandatory that you list all pigs on the litter application. They do not have to be named, but do need to be listed as to have an account of the number of pigs farrowed, registered and transferred. The ALBC would like for you to list the barrows on the litter application also as they are trying to keep a count of breeding animals in the breed. It is much more important to list all pigs on the application than to list one pig. The number of pigs, compared to the number of litters, gets a little mixed up with the 1,2,3 pig litters. It costs no more to register all the litter than for one pig, as you get one sheet of registry information per litter. The demand for Tamworths is strong so make sure you sell your

The image shows two forms from the Tamworth Swine Association. The left form is the 'APPLICATION FOR REGISTRATION' which includes fields for litter number, date born, number of pigs born, and registration fees. It also has a pedigree section for sire and dam, and a service certificate for bred sows. The right form is the 'Individual Pigs in Litter' sheet, which is a grid for recording individual pig information including name, sex (Boar or Barrow), date, and whether it is a gilt. It includes instructions to read and a declaration at the bottom.

See Registration Form on page 19 and Completion Guide on page 20.

customers a registered Tam. Sometimes a person does not need a paper at the time of the purchase but decides at a later date they want to raise some pigs, so if it isn't listed on the paper it can't be registered.

— Dave LaFollette, President



BRATTAIN FARMS TAMWORTHS

“THE WINNING WAY!”



Try a Tam — You'll Like Them!

***Great for Farmers Markets • Ideal Grazier Pigs
What A Flavor • Really Great Mothers
GREAT SHOW PIGS!***

Breeding Stock Available • 4-H Pigs

4-H SALE—APRIL 5, 6:30 P.M.

Tamworth • Hereford • All Breeds

**Marshall & Shirley Brattain
621 N 850 W, Greencastle, Indiana 46135**

MANY THANKS TO OUR BUYERS WHO HAVE CONTINUED TO SUPPORTED US THRU THE YEARS.



WISCONSIN BOAR STORE

Serving All Your Swine Breeding Needs

Visit Us At: www.rakegenetics.com

BERKSHIRES

CHESTER WHITES

HAMPSHires

DUROCS

YORKSHIRES

- **Breeding Boars For Sale - one or groups**
- **Fresh Semen, call for pick-up or economical proven ground delivery service**
- **Open or Bred Gilts, small or large groups, call for availability**
- **Confinement and outside adaptable**
- **Meat Quality Approved**
- **Conventional Herd Health monitored by Dr. Mike Etter. Lodi Vet Clinic**
- **Call ahead to order custom bred Crossbred Breeding Stock**
- **Boar Semen for Sale from practical production type boars**
- **Powerful Purebred Stress Free Sires (approximately 25 boars at stud)**
- **Use our Satisfaction Guaranteed Sales and Delivery Service**

RAKE GENETICS

A Tradition of Excellence



TOM RAKE FAMILY

Boars, gilts & prospect pigs for sale all year round.

6840 Schumacher Road,
Waunakee, WI 53597
www.rakegenetics.com

Phone: 608 849-7458
Cell: 608 219-7467
Email: tomrake@aol.com



RAKE GENETICS

– A TRADITION OF EXCELLENCE



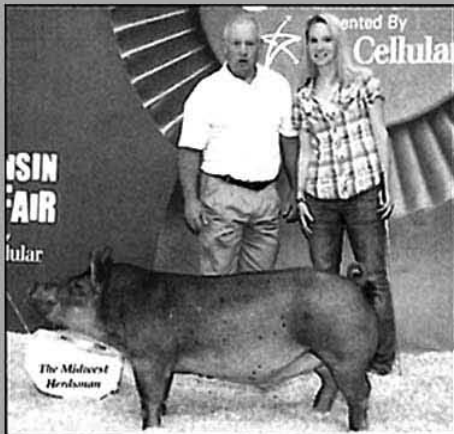
"PUNKIN"

Grand Champion Gilt at the 2011 National Tamworth Show and Reserve Grand Gilt at IN and WI State Fairs. Special thanks to Tom Rake and Family for their purchase.

tamworth



Elizabeth Rake's 2012 WSF Champion Tam Barrow sired by **MG Steam Roller 2-1**, Litter Mate to Indiana Champion Barrow Dam - **Punkin**. Full brother to new Jr. Tam Herdsire **WBS Red Brick 218-4**



Congratulations to Stephanie Anderson of Lake Mills, Wis., on successfully showing the Champion Tamworth Barrow at the Wisconsin State Fair and then selling him in the Governor's Auction for \$3,500. This barrow was bred here.

Congratulations to Logan Pell, Greencastle, IN on showing the 2012 Indiana State Fair Jr. Show Champion Barrow bred here and purchased from us, sired by MG Steamroller 2-1. Special thanks to Phil and Chas Grover for all your help getting our Tam program off to a great start! Also, Doug Millar Family for breeding our Foundation Sow "Punkin."



Illini Winter Classic and Team Purebred Sale Tamworth Gilts

G&L Showpigs, Wis., selected our Illini Winter Classic Tamworth gilt, shown above. This Steamroller gilt is thick, muscular, easy moving and has maternal written all over her. She is bred to QH Meat Maker.

Our \$1,700 Tamworth female consigned to the Team Purebred Sale had many positive comments. This Steamroller daughter is muscular, wide chested, sound and correct, with a great underline and bred to QH Meat Maker should make her litter exciting and valuable. Purchased by the Wisconsin Junior Tamworth Club (call for details), this outstanding female will highlight this group's spring litters. Thanks for your support.

Other Sale Thanks

Illini Winter Classic - Jon Meness, Tenn.
Team Purebred - Bill Clothier, Wis.; and Wells Family Farm, Ohio

TOM & DIANE RAKE FAMILY

6840 Schumacher Rd. • Waunakee, WI 53597
(608) 849-7458 - home • (608) 219-7467 - cell

Visit our Website at www.rakegenetics.com

Tom
Diane
Molly
Elizabeth



Nila Robinson, Prop.

Whistleberry Farm

Pasture Raised Tamworths



**Selected for quality, true Tamworth type,
good temperament and mothering ability**

My herd has been tested for PSSF, and I will guarantee the breeding stock you purchase to be negative for the porcine stress susceptibility factor. Certification will accompany papers.

Email: freerange@whistleberryfarm.com

Website: www.whistleberryfarm.com

N4807 Kettner Road
Shiocton, WI 54170
(920) 540-3900

Breeding stock usually available

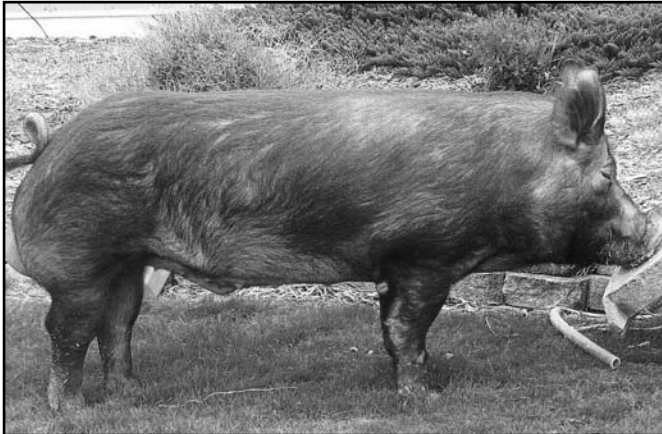


Prairie State Semen, Inc.

968 Co. Rd, 1000 N
Champaign, IL 61822
800-282-0428

www.showpigs.com

BRUNO 4-3



(DP9 9-1 X PSSS Mac's Pride 5-6)

Reg#236223

BRUNO 4-3

(MG Master Chaz X First Rate)

Bred by: Leaning Pine Farms (John Brewer)

Owned by: PSSS & Phil Francis

- Tamworth boar with outstanding muscle and shape!
- His dam is a tremendous daughter of PSSS Mac's Pride 5-6!
- We feel confident in this boar's ability to produce both outstanding Tamworth show prospects, as well as heritage/pasture pigs!

• **Frozen Semen Available in 2013** •



LEANING PINE FARMS LLC
REGISTERED TAMWORTHS

Show pigs, Breeding stock, and Feeder Pigs

**The South's
source for
Quality
Tams!**

Dr. John Bruner & Family

473 Edward Meece Rd
Science Hill, KY 42553
606-271-0582

inosbruner@msn.com

**Good Selection of January & February
Show pigs available**

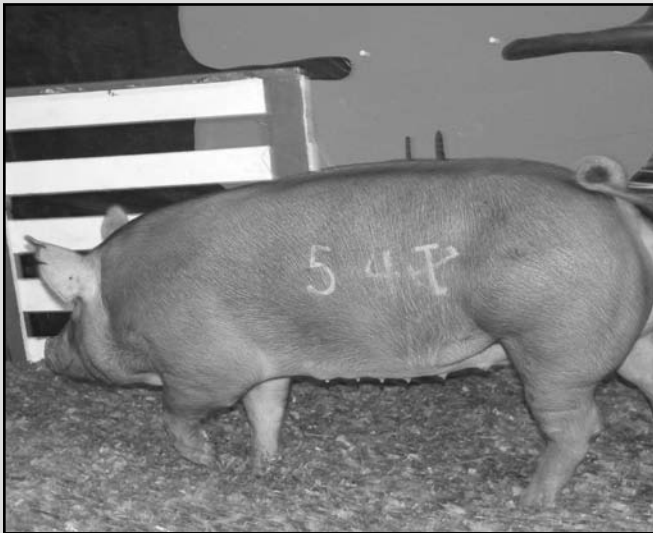
Pigs sold to satisfied customers in: TX, PA, SC, NC, KY, TN, AL, WA, GA, IN,
WV, OH, WI, FL, MI, IL, VA, MS.



Emerald Farms

REGISTERED TAMWORTHS

We strive for genetics that produce large uniform litters.



*Champion Open Gilt 2012 National Show and Sale
Purchased by Clint High Farms, New Vienna, OH*



*Champion Bred Gilt 2012 National Show and Sale
Purchased by Joel Dicken Family, AL*

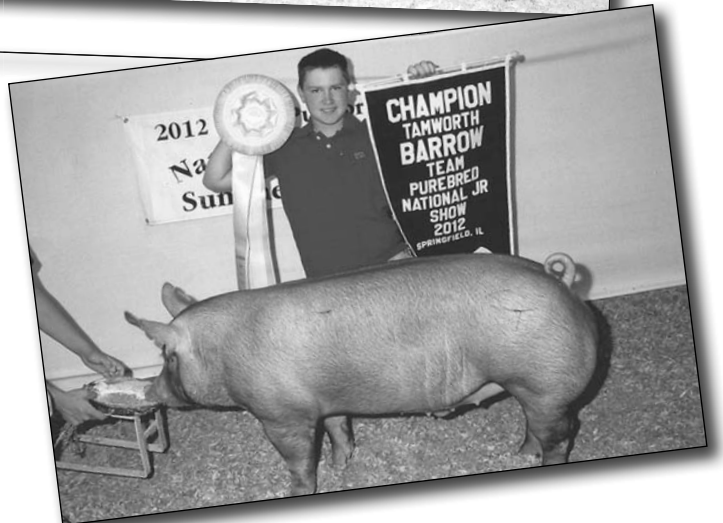
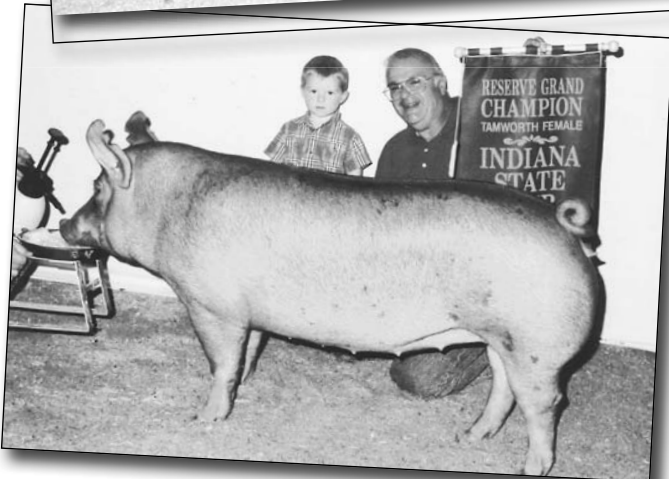
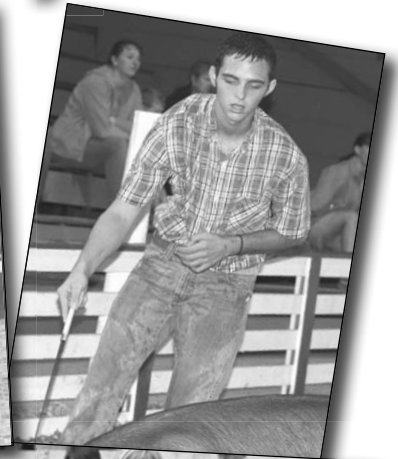
Thanks To All The Buyers Who Have Purchased From Us
And Shown Confidence In Our Breeding Program.

For other livestock needs, please contact us about Registered Ayrshire Cattle.

*Fenton Brothers
22050 St. Rt. 136
Winchester, Ohio
(937) 695-0697
Doug: (937) 205-1209*

*Tom & Connie Fenton
200 Centenary Rd.
Winchester, Ohio
(937) 217-0287
email: fentontcrl@localnet.com*

Youth of Today



JUNIOR MEMBERSHIP APPLICATION

I hereby make application for Junior Membership in the Tamworth Swine Association. I agree to abide by the Constitution and By-Laws of the Association.

Signature of Applicant _____

Address _____

Date of Birth _____

The above applicant is a member of the

Name of 4-H or FFA Chapter _____

Date _____

Signature of FFA Advisor, 4-H Club Leader County Ext. Agent or 4-H Ext Agent _____

CUT ALONG DOTTED LINE

SENIOR MEMBERSHIP APPLICATION

**TAMWORTH SWINE ASSOC.
9680 East 550 North
Darlington, IN 47940**

Gentlemen:

I hereby make application for membership in the Association. I agree to abide by the Constitution and By-Laws of the Association. Enclosed is \$10.00 for membership fee.

Signature or Firm Name _____

Address _____

Date _____ Phone No. _____

E-mail Address _____



APPLICATION FOR REGISTRATION TAMWORTH SWINE ASSOCIATION

9680 East 550 North
Darlington, IN 47940

LITTER
NUMBER

PLEASE
PRINT
PLAINLY

RE IMPORTANT
Show Litter Notch
Litter Notch Must
Be in Right Ear

ALL PIGS MUST BE EAR NOTCHED WITH THE UNIVERSAL SYSTEM.

Date Born _____ No. Pigs Born _____ No. Raised: Boars _____ Sows _____

Registered within 90 days of birth Members \$20 Non members \$25
Registered after 90 days of birth Members \$35 Non members \$40

Owner _____ (Owner of sow at the time litter was farrowed) Address _____ Town _____ State _____

Breeder _____ (Owner of sow when she was bred.) Address _____ Town _____ State _____

Pedigree of Litter

Must be completely filled out

SIRE _____ Reg. No. _____

Sire of Sire _____ Reg. No. _____

Dam of Sire _____ Reg. No. _____

DAM _____ Reg. No. _____

Sire of Dam _____ Reg. No. _____

Dam of Dam _____ Reg. No. _____

SERVICE CERTIFICATE FOR BRED SOW ONLY

Sow No. _____ Date of Service _____ Service Boar No. _____

Owned by _____

(Signed by Owner of Service Boar at Time of Mating.)

Individual Pigs in Litter

Please Read Instructions. All eligible pigs **MUST** be recorded at the same time.
Indicate if **BOAR** or **BARROW** (Limit Name to 30-Characters) **GILTS**
Herd Mark - Year Name Ear Notch Herd Mark - Year Name Ear Notch

Name BOAR BARROW _____ Sale Date _____
Buyer _____ City, State _____

Name BOAR BARROW _____ Sale Date _____
Buyer _____ City, State _____

Name BOAR BARROW _____ Sale Date _____
Buyer _____ City, State _____

Name BOAR BARROW _____ Sale Date _____
Buyer _____ City, State _____

Name BOAR BARROW _____ Sale Date _____
Buyer _____ City, State _____

Name BOAR BARROW _____ Sale Date _____
Buyer _____ City, State _____

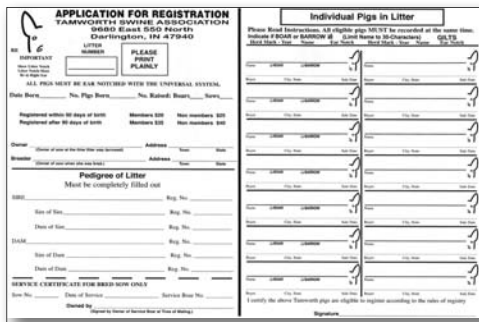
Name BOAR BARROW _____ Sale Date _____
Buyer _____ City, State _____

I certify the above Tamworth pigs are eligible to register according to the rules of registry

Signature _____

“When you sell a pig please transfer the pig so that the new owner can get pigs registered”

GUIDES FOR COMPLETING APPLICATION FOR REGISTRATION: (how to complete)



See Registration Form on previous page.

- Litter Number:** (number of the litters born - do not use same litter number twice in same year)
- Date Born:** (date pigs were born)
- No. Pigs Born:** (number born in the litter)
- No. Raised: Boars:** (number of male pigs); **Sows:** (number of female pigs)
- Owner/Address:** (person who owns the sow and their address)
- Breeder/Address:** (owner of the sow when she was bred and their address)
- Pedigree of Litter** (must be completed filled out as indicated):
- Sire:** (name on registration) **Reg No:** (registration number)
(completed for Sire of Sire; and Sire of Dam)
- Dam:** (name on registration) **Reg No:** (registration number)
(completed for Sire of Dam and Dam of Dam)
- Service Certificate for Bred Sow Only:** (completed when purchased bred sow)
- Individual Pigs in Litter:** (where you list the pigs that were born in litter - if not listed here, pig can not be registered later).

It is suggested that you name (if you want) pigs born in litter the following way:

BF12 Tiger 6-1 BF (indicates farm), **12** (indicates year born) **Tiger** (name you want pig called) **6-1** (ear notch of pig)

Naming the pig in this manner helps the registry look up information when needed, or if missing from someone registering pigs for first time. Please indicate if pig is a barrow or a boar on left column (remember if marked as barrow it can not be sold as a boar). If you sold the pig, please provide the name and complete address (even if attached to additional paper) of the buyer. - Doing so allows the registry to get the individual pedigree typed and sent to the buyer. — If the address is not completed, you may get the pedigree to forward to the buyer.

The Final step is to sign the application.

NOTE: Unless the indicated individual pedigree provided to the buyer is listed; if they need papers later for fairs and shows please let the registry know along with information indicating name of the pig — The above information is helpful to get an individual pedigree for you.



TAMWORTH SWINE ASSOCIATION

Owner Transfer Application

EN _____ SEX _____ REG# _____ NAME _____

SALE DATE: _____

BUYER NAME: _____

ADDRESS: _____

CITY: _____ STATE: _____ ZIP: _____

OWNER'S SIGNATURE: _____

TAMWORTH ORIGIN AND HISTORY

The Tamworth originated in Ireland where they were known as "Irish Grazers", being given that name due to the fact that they were such wonderful foragers. About 1812 Sir Robert Peel, being impressed with the characteristic of these hogs imported some of them to his estate at Tamworth, England. It is from this place they derived their name. An English authority, who calls it the "Mahogany" or "Grizzly" pig, says it was extensively bred in several of the midland counties of England early in the nineteenth century. When the droves were mainly kept in the woods and forests. They are not a composite breed, and are thought by many to be one of the oldest and purest breeds in Britain.

THE TAMWORTH BEFORE IMPROVEMENT

They were long of limb, long in the snout and flat in the rib. They were active, hardy, good rustlers, and very prolific, but they were slow feeders and late in maturing.

THE IMPROVEMENT OF TAMWORTHS

This has been almost entirely effected through selection, judicious breeding, and management. It is now pretty generally conceded that the blood of other breeds has not been used to any extent in the improvement of Tamworths. Tamworths have been used in developing other breeds in the United States.

WHEN IMPROVEMENT WAS EFFECTED

They appear to have been improved to a considerable extent before the middle of the 19th Century, as they were given First Honors at the Royal Agricultural Society's Show when competing with large breeds as early as 1847. But subsequent to this period they sank into obscurity, and were only known in some local districts. About 1877 a demand grew up for more hogs of the bacon type, and breeders of Tamworths brought their favorites to the front in England.

THE FIRST TAMWORTHS IN THE UNITED STATES

The first Tamworths in the United States were those imported by Thomas Bennett of Rossville, Illinois in 1882. In the following decade, Tamworths were also imported into Canada and the breed gradually became known in both countries. The Tamworth has two characteristics for which it was entitled to preeminence; i.e.; an unusual proportion of lean meat, and large litters of pigs; also that Tamworths will make as many pounds of gain, largely lean meat, from a given weight of feed as will hogs of any other breed. From these early imports, the Colorado agricultural College's three year farm average for all sows was ten live pigs to a litter. A two-year old sow weighing 750 pounds had 18 live pigs at one farrowing, and a Tamworth at the Iowa Agricultural College raised 33 pigs in one year.

ORGANIZATION

Tamworth Swine are protected by registration in Great Britain, the United States and Canada. The American Tamworth Swine Record Association was organized in 1897.

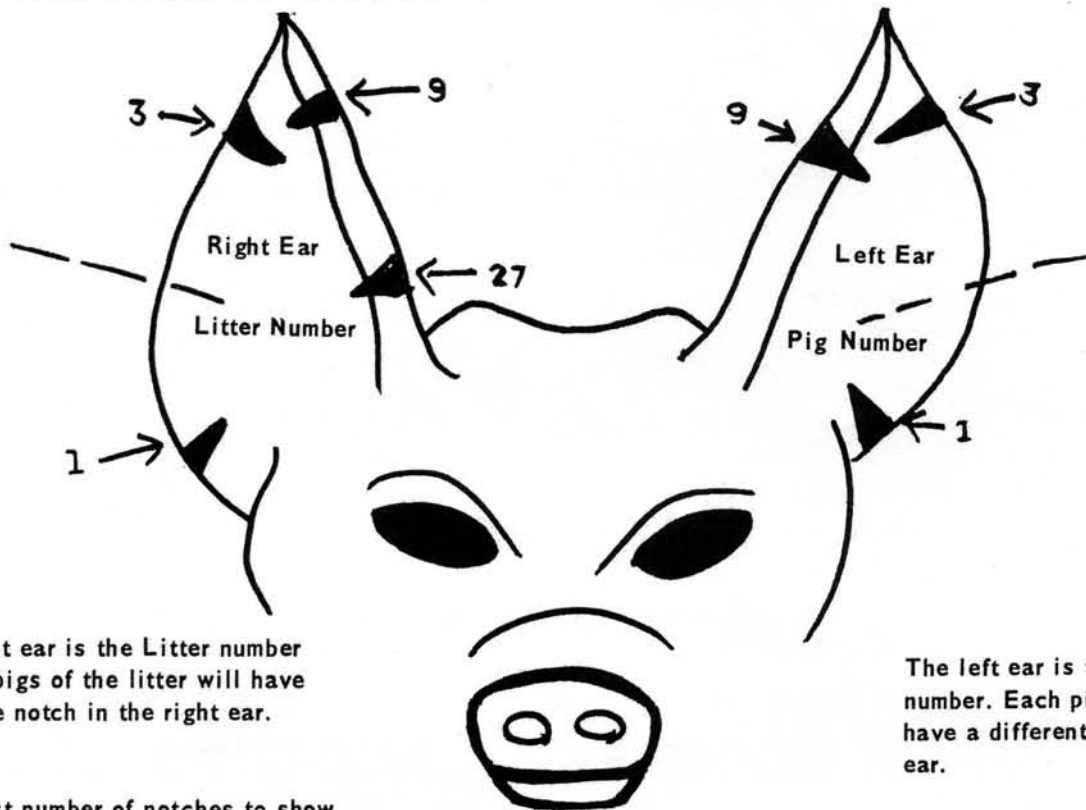
SWINE GESTATION TABLE																																	
115 DAYS																																	
Bred Jan.	1	2	3	4	5	6	7	8	9	10	11	12	13	14	15	16	17	18	19	20	21	22	23	24	25	26	27	28	29	30	31	-	Jan.
Farrow Apr.	26	27	28	29	30	1	2	3	4	5	6	7	8	9	10	11	12	13	14	15	16	17	18	19	20	21	22	23	24	25	26	-	May.
Bred Feb.	1	2	3	4	5	6	7	8	9	10	11	12	13	14	15	16	17	18	19	20	21	22	23	24	25	26	27	28	-	-	-	-	Feb.
Farrow May	27	28	29	30	31	1	2	3	4	5	6	7	8	9	10	11	12	13	14	15	16	17	18	19	20	21	22	23	-	-	-	Jun.	
Bred Mar.	1	2	3	4	5	6	7	8	9	10	11	12	13	14	15	16	17	18	19	20	21	22	23	24	25	26	27	28	29	30	31	-	Mar.
Farrow Jun.	24	25	26	27	28	29	30	1	2	3	4	5	6	7	8	9	10	11	12	13	14	15	16	17	18	19	20	21	22	23	24	-	Jul.
Bred Apr.	1	2	3	4	5	6	7	8	9	10	11	12	13	14	15	16	17	18	19	20	21	22	23	24	25	26	27	28	29	30	-	-	Apr.
Farrow Jul.	25	26	27	28	29	30	31	1	2	3	4	5	6	7	8	9	10	11	12	13	14	15	16	17	18	19	20	21	22	23	-	Aug.	
Bred May.	1	2	3	4	5	6	7	8	9	10	11	12	13	14	15	16	17	18	19	20	21	22	23	24	25	26	27	28	29	30	31	-	May.
Farrow Aug.	24	25	26	27	28	29	30	31	1	2	3	4	5	6	7	8	9	10	11	12	13	14	15	16	17	18	19	20	21	22	23	-	Sep.
Bred Jun.	1	2	3	4	5	6	7	8	9	10	11	12	13	14	15	16	17	18	19	20	21	22	23	24	25	26	27	28	29	30	-	-	Jun.
Farrow Sep.	24	25	26	27	28	29	30	1	2	3	4	5	6	7	8	9	10	11	12	13	14	15	16	17	18	19	20	21	22	23	-	Oct.	
Bred Jul.	1	2	3	4	5	6	7	8	9	10	11	12	13	14	15	16	17	18	19	20	21	22	23	24	25	26	27	28	29	30	31	-	Jul.
Farrow Oct.	24	25	26	27	28	29	30	31	1	2	3	4	5	6	7	8	9	10	11	12	13	14	15	16	17	18	19	20	21	22	23	-	Nov.
Bred Aug.	1	2	3	4	5	6	7	8	9	10	11	12	13	14	15	16	17	18	19	20	21	22	23	24	25	26	27	28	29	30	31	-	Aug.
Farrow Nov.	24	25	26	27	28	29	30	1	2	3	4	5	6	7	8	9	10	11	12	13	14	15	16	17	18	19	20	21	22	23	24	-	Dec.
Bred Sep.	1	2	3	4	5	6	7	8	9	10	11	12	13	14	15	16	17	18	19	20	21	22	23	24	25	26	27	28	29	30	-	-	Sep.
Farrow Dec.	25	26	27	28	29	30	31	1	2	3	4	5	6	7	8	9	10	11	12	13	14	15	16	17	18	19	20	21	22	23	-	Jan.	
Bred Oct.	1	2	3	4	5	6	7	8	9	10	11	12	13	14	15	16	17	18	19	20	21	22	23	24	25	26	27	28	29	30	31	-	Oct.
Farrow Jan.	24	25	26	27	28	29	30	31	1	2	3	4	5	6	7	8	9	10	11	12	13	14	15	16	17	18	19	20	21	22	23	-	Feb.
Bred Nov.	1	2	3	4	5	6	7	8	9	10	11	12	13	14	15	16	17	18	19	20	21	22	23	24	25	26	27	28	29	30	-	-	Nov.
Farrow Feb.	24	25	26	27	28	1	2	3	4	5	6	7	8	9	10	11	12	13	14	15	16	17	18	19	20	21	22	23	24	25	-	Mar.	
Bred Dec.	1	2	3	4	5	6	7	8	9	10	11	12	13	14	15	16	17	18	19	20	21	22	23	24	25	26	27	28	29	30	31	-	Dec.
Farrow Mar.	26	27	28	29	30	31	1	2	3	4	5	6	7	8	9	10	11	12	13	14	15	16	17	18	19	20	21	22	23	24	25	-	Apr.

TAMWORTH EAR NOTCHING SYSTEM

Guide for showing location and value of ear notches for marking litters and individual pigs. Breeders may change over to this system in 1966.

THIS IS THE ONLY SYSTEM WHICH WILL BE PERMITTED AFTER JANUARY 1, 1967

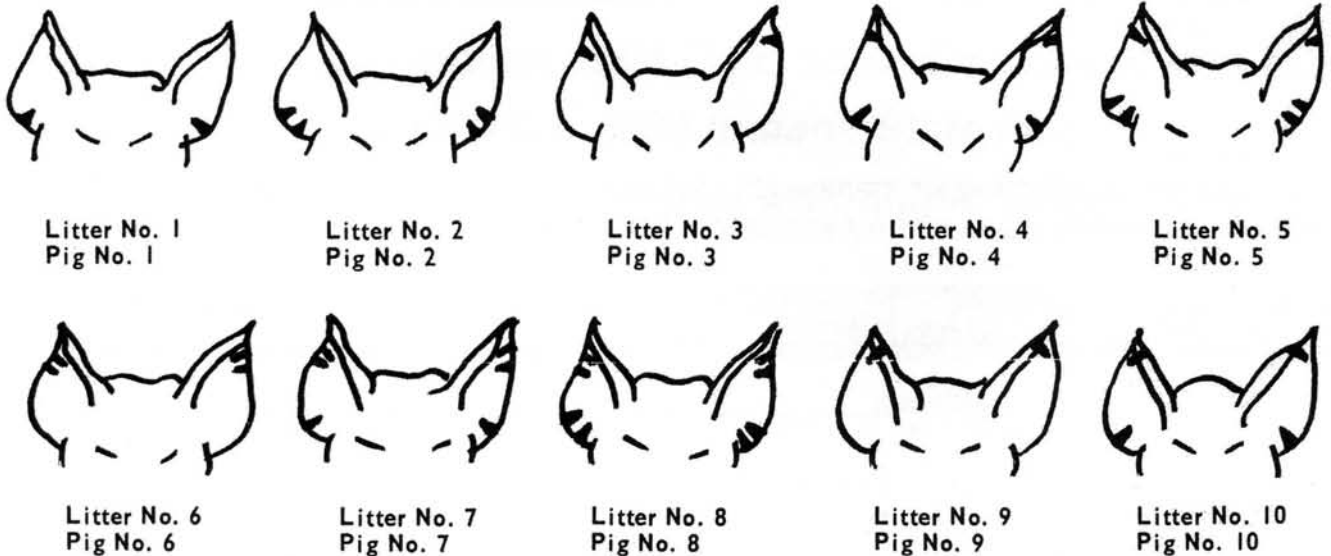
Number litters consecutively for one calendar year. Start over with Number 1 at the beginning of each year. The Association may refuse to register or certify for showing any animal not properly ear marked. All pedigrees sent in for recording must be made out on the blanks of this Association.



The right ear is the Litter number and all pigs of the litter will have the same notch in the right ear.

The left ear is the pig's specific number. Each pig in a litter will have a different notch in the left ear.

Use least number of notches to show number.



To avoid confusion when showing the ear notches on a Litter Report Card, or Pedigree Application Card, indicate notches by a single straight line thusly:



This would be Litter No. 13 Pig No. 16

Harnacke Tams

Champion Genetics

Breeding stock and show pigs available most times.



Thanks to all who have purchased from us and we wish you much success. A great big thanks to the Dickens Family in Mississippi and congratulations on your new baby.

Congrats to our children Cameron and Brooke - last year's success. Special thanks to Tom Rake (Wisconsin Boar Stud), for his purchase of Meat Maker. We retained part interest and his first pigs look great.

Quint Harnacke Family
1620 100th Avenue • New Holland, IL 62671
(217) 445-2506

McDERMIT GENETICS

- **Tamworth* 4-H Pigs (January & February)**
- **Tamworth* Breeding Stock**
- **Tamworth* Feeder Pigs**
- **4-H Lambs**
- **Pigs and lambs available for freezer**

**High quality, but quantity is limited due to downsizing.
It is advisable to reserve early.**

4726 S. County Road 300 W.
Greencastle, Indiana 46135
Home: 765-653-4342

Cell: 765-719-0242 (after 7 p.m.)

E-mail: mcdermitgenetics@comcast.net

*If you need a Tamworth that
looks like a Tamworth and
breeds on their own,
give us a call.*

**New herd sire is from Fenton Brothers*



Clothier Genetics

Ensure your winners by purchasing our quality stock.



Spring pigs available by QH Meat Maker 4-9

If interested, please contact Bill at 608-290-7639

Clothier Genetics • Clinton, WI

SWENSON FARMS TAMWORTHS

Sound Pasture-raised breeding stock available at most times.

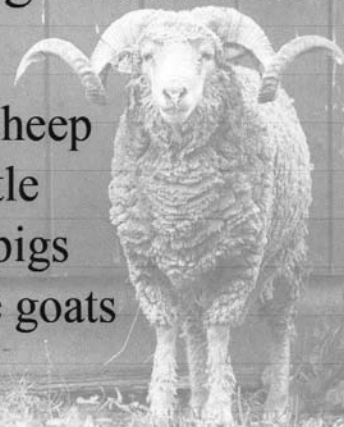
Registered Tamworths

We are pleased with the litters sired by MVF12 1-4. He was Reserve Champion Boar at the Illinois State Fair in 2012. Really good pigs on the ground are out of him.

Glenn Swenson
2935 N 4750 Road
Sandwich, IL 60548
Phone: (815) 786-2786

A New England source for:

Santa Cruz sheep
Kerry cattle
Tamworth pigs
San Clemente goats



USDA inspected & approved farm raised meat for sale. Individual cuts, half, or whole carcass available.

Call us for rates!

THE INN  at EAST HILL FARM
460 Monadnock Street
Troy, New Hampshire 03465
www.east-hill-farm.com 1-800-242-6495

LaFollette, Koopman & Dale Showpigs



Champion Hereford Barrow 2012 Team Purebred



Res. Champion Tamworth Barrow 2012 Team Purebred



3rd overall Hereford Barrow 2012 Team Purebred



Champion Tamworth Gilt 2012 IJSC

Thank you to our 2012 buyers and congratulations on all your successes in the show ring! 2012 was a great year for us and we anticipate another great show season in 2013. Our spring litters will be bred similar to the pigs that you see in the pictures. Be sure to contact us to check out our new litters of show pigs! We will have **Herefords, Tamworths, Berks, Polands, & Chesters** available this spring farrowed Dec., Jan. & Feb. We look forward to working with you in 2013!!!



Champion Tamworth Barrow 2012 IJSC

Dave LaFollette & Family

9680 E 550 N

Darlington, IN 47940

Dave: 765-366-8655

Carin: 765-366-4809

Home: 765-794-0203

Email: lkshowpigs@gmail.com

Email: lafollette1958@Hughes.net

Garritt L Koopman & Family

8297 N Old St Rd 55

Wingate, IN 47994

Garritt: 765-376-7750

Home: 765-275-2296

Email: koop1981@hotmail.com

Ryan Dale

9680 E 550 N

Darlington, IN 47940

Ryan: 765-376-9565

Email: Honda_619_450@yahoo.com

AHH YES, MEMORIES!



FAITH, FAMILY, FARMING, FARMALLS, FINE HOGS

GET SOME TAMS – MAKE YOUR OWN MEMORIES!

Thanks to all who have used our genetics in the past and we look forward to your repeat business and to meeting all the folks who are searching for great Tamworth hogs to add to their farms!

BUCKEYE PRIVATE TREATY 4-H PIG SALE

SATURDAY APRIL 14

PREBLE CO. FAIRGROUNDS

EATON OHIO BARN OPENS 11AM SALE AT 2PM

SEMEN AVAILABLE UPON REQUEST

PAUL MORRISON FAMILY TAMS

2802 WEAVER STATION ROAD

NEW MADISON, OHIO 45346

HOME: (937) 996-5491 • CELL: (937) 459-0389

Email: paulnwmdsn@aol.com

TAMWORTH SWINE ASSOC.

9680 East 550 North

Darlington, IN 47940

Farms Feed America